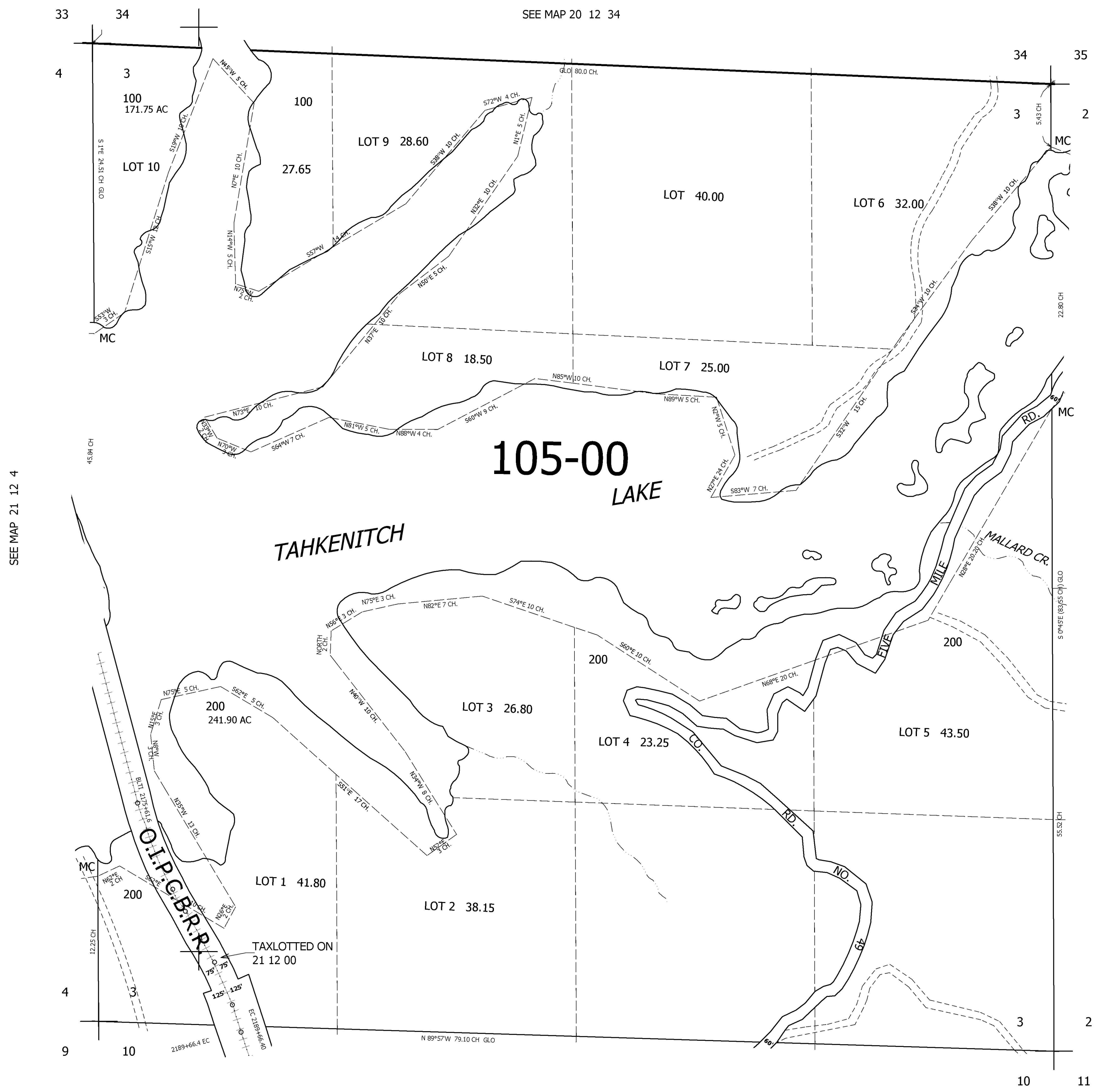


THIS MAP WAS PREPARED FOR ASSESSMENT PURPOSE ONLY.

SEC.3 T.21S. R.12W. W.M.
DOUGLAS COUNTY
1" = 400'

REVISED ON
7-14-10

21 12 3



SEE MAP 20 12 34

SEE MAP 21 12 4

SEE MAP 21 12 2

SEE MAP 21 12 10

787,000

3,965,000

CANCELLED NO'S
100M1

21 12 3