

THIS MAP WAS PREPARED FOR ASSESSMENT PURPOSE ONLY.

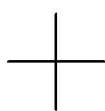
SEC.35 T21S. R.11W. W.M.
DOUGLAS COUNTY

REVISED ON

21 11 35

1" = 400'

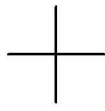
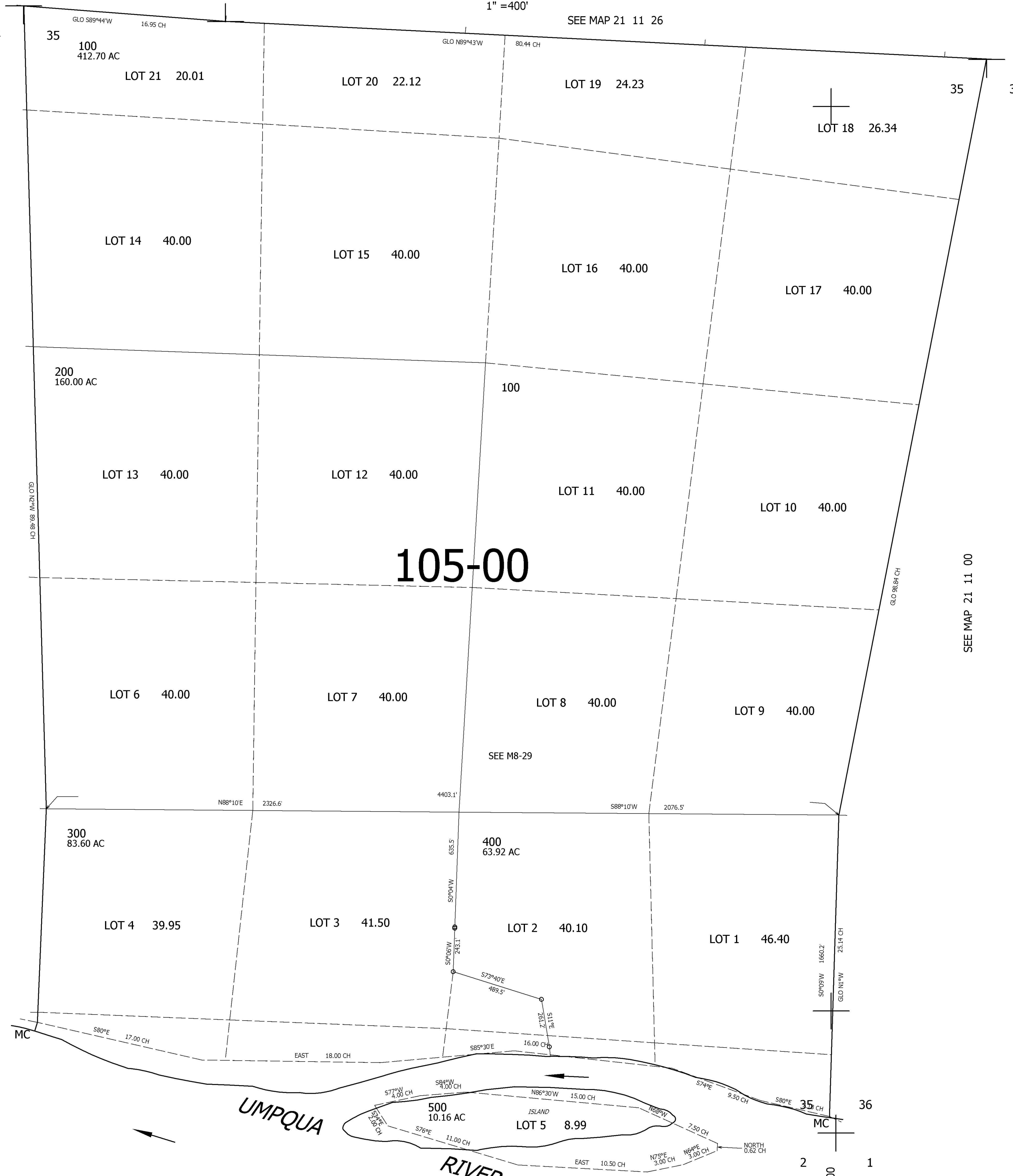
SEE MAP 21 11 26



SEE MAP 21 11 00

SEE MAP 21 11 00

CANCELLED NO'S



34 35

SEE MAP 22 11 1

4,003,000

759,000

21 11 35