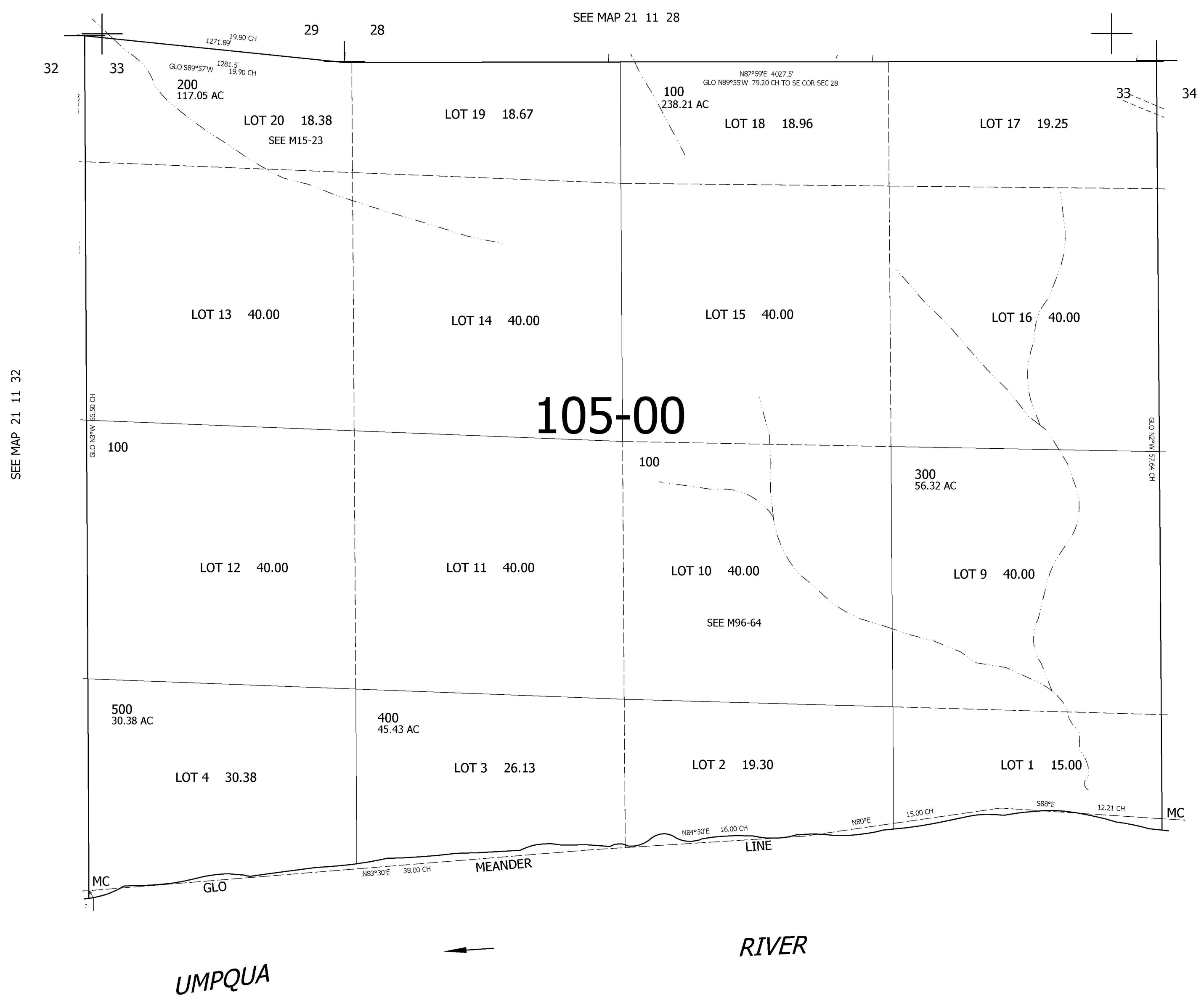


THIS MAP WAS PREPARED FOR ASSESSMENT PURPOSE ONLY.

SEC.33 T21S. R.11W. W.M.
DOUGLAS COUNTY
1" = 400'

REVISED ON

21 11 33
(1 OF 2)



SEE MAP 21 11 32

SEE MAP 21 11 28

CANCELLED NO'S

SEE MAP 21 11 34

760,000

SEE MAP 21 11 33 (2 OF 2)

3,993,000

21 11 33
(1 OF 2)

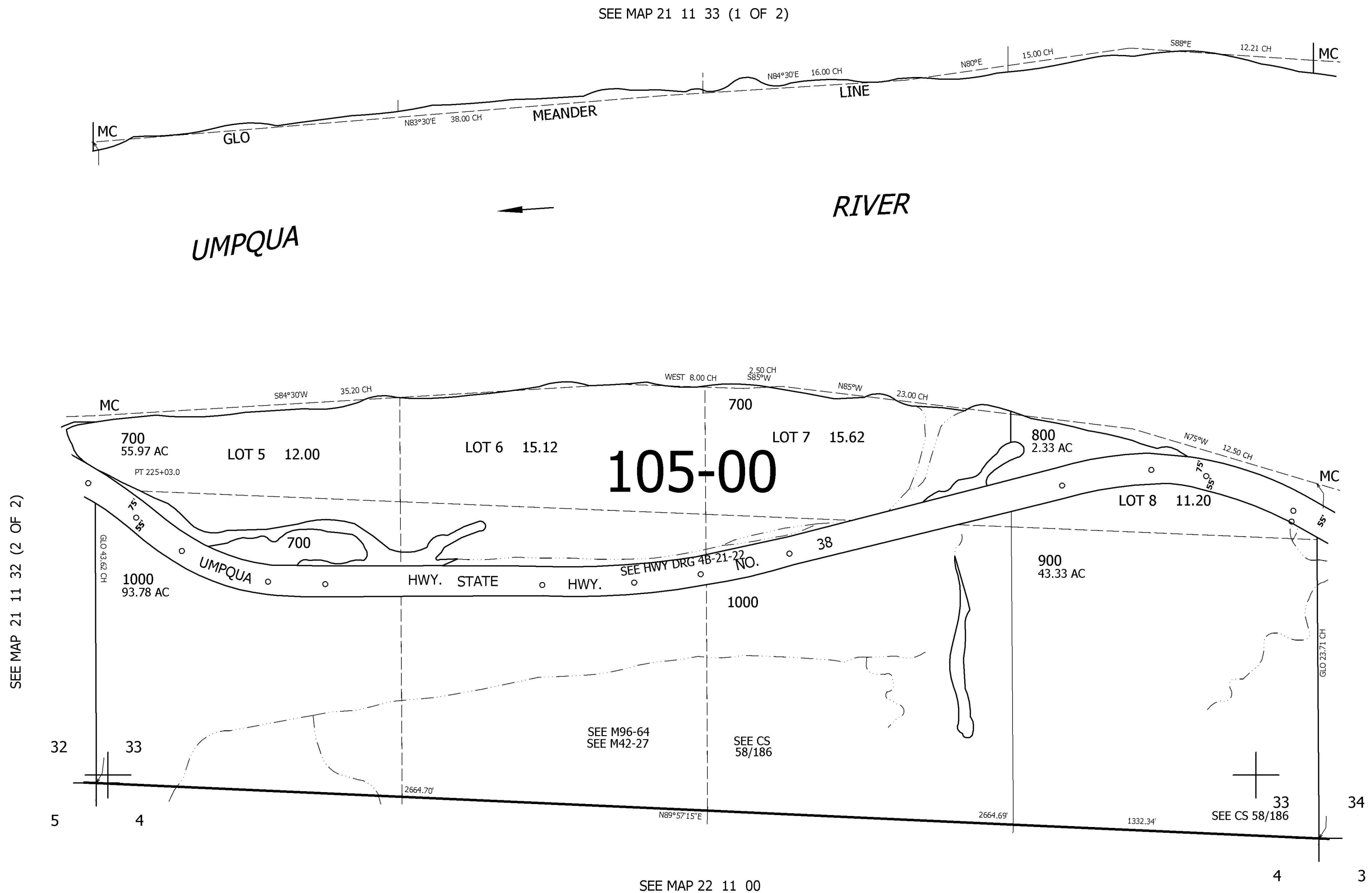
THIS MAP WAS PREPARED FOR ASSESSMENT PURPOSE ONLY.

SEC.33 T21S. R.11W. W.M.
DOUGLAS COUNTY
1" = 400'

REVISED ON
5-26-93

21 11 33
(2 OF 2)

CANCELLED NO'S
600



SEE MAP 21 11 32 (2 OF 2)

SEE MAP 21 11 33 (1 OF 2)

105-00

SEE MAP 21 11 34

SEE MAP 22 11 00

758,000

3,993,000

21 11 33
(2 OF 2)