

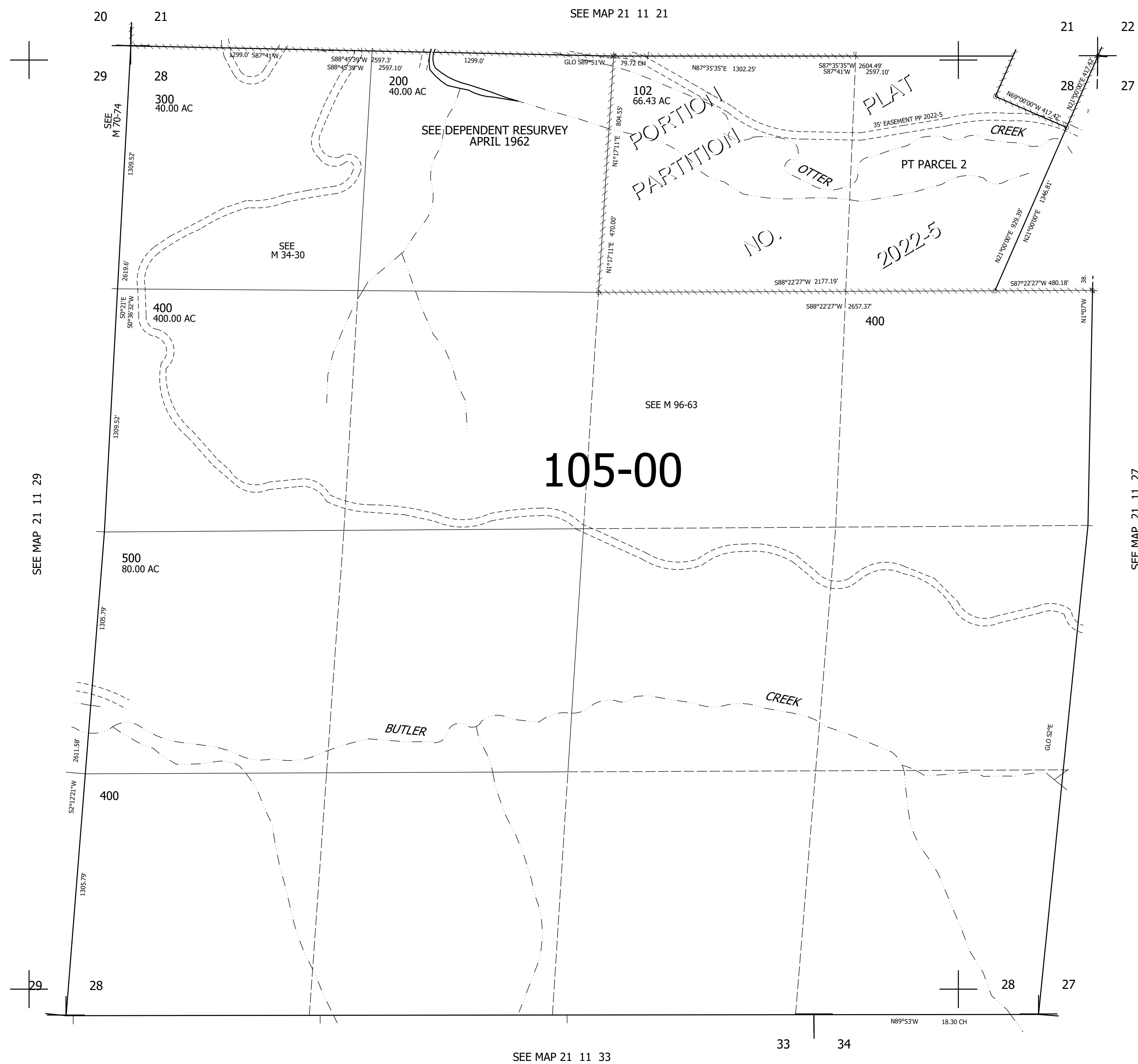
THIS MAP WAS PREPARED FOR ASSESSMENT PURPOSE ONLY.

SEC.28 T21S. R.11W. W.M.
DOUGLAS COUNTY

REVISED ON
2-9-22

21 11 28

1" = 400'



CANCELLED NO'S
300M1 100 101
103

765,000

SEE MAP 21 11 33

33 34

N89°53'E 18.30 CH

3,994,000

21 11 28