

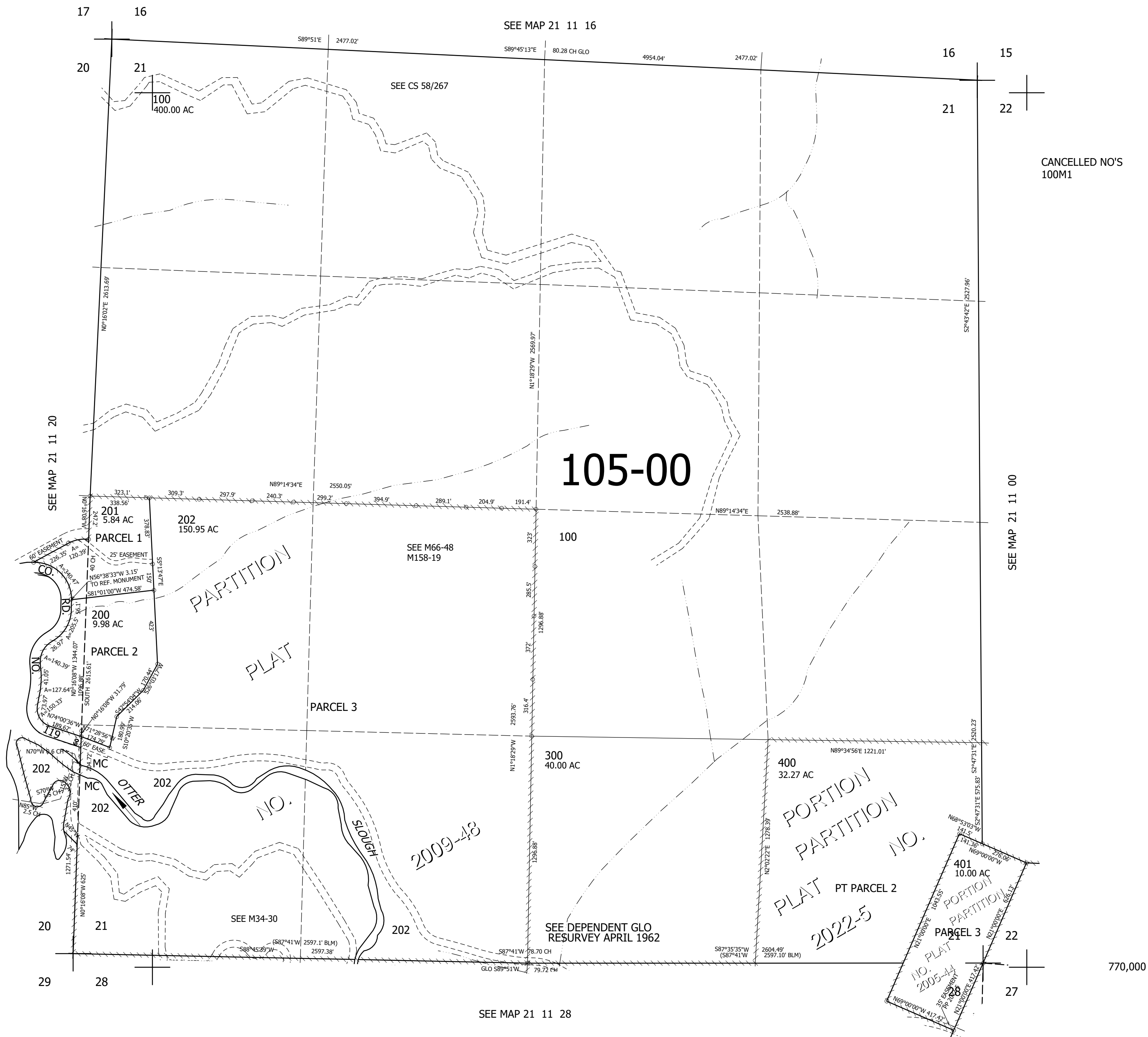
THIS MAP WAS PREPARED FOR ASSESSMENT PURPOSE ONLY.

SEC.21 T21S. R.11W. W.M. DOUGLAS COUNTY

REVISED ON
2-9-22

21 11 21

1" = 400'



CANCELLED NO'S
100M1

SEE MAP 21 11 00

770,000

SEE MAP 21 11 28

3,995,000

21 11 21