

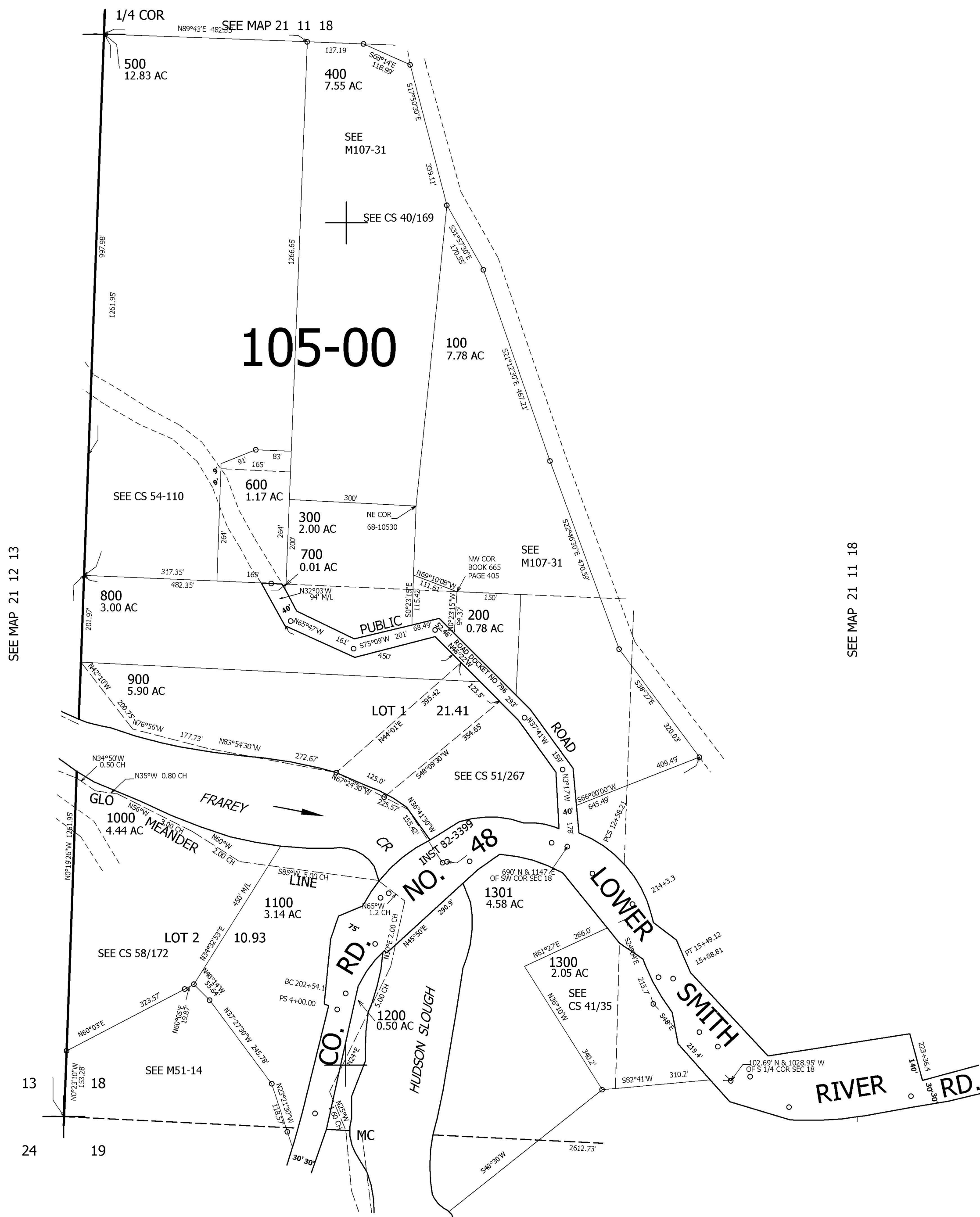
THIS MAP WAS PREPARED FOR ASSESSMENT PURPOSE ONLY.

SW1/4 SEC.18 T21S. R.11W. W.M.
DOUGLAS COUNTY

1" = 200'

REVISED ON
5-13-10

21 11 18C



CANCELLED NO'S
101

776,000

3,982,000

21 11 18C