

THIS MAP WAS PREPARED FOR ASSESSMENT PURPOSE ONLY.

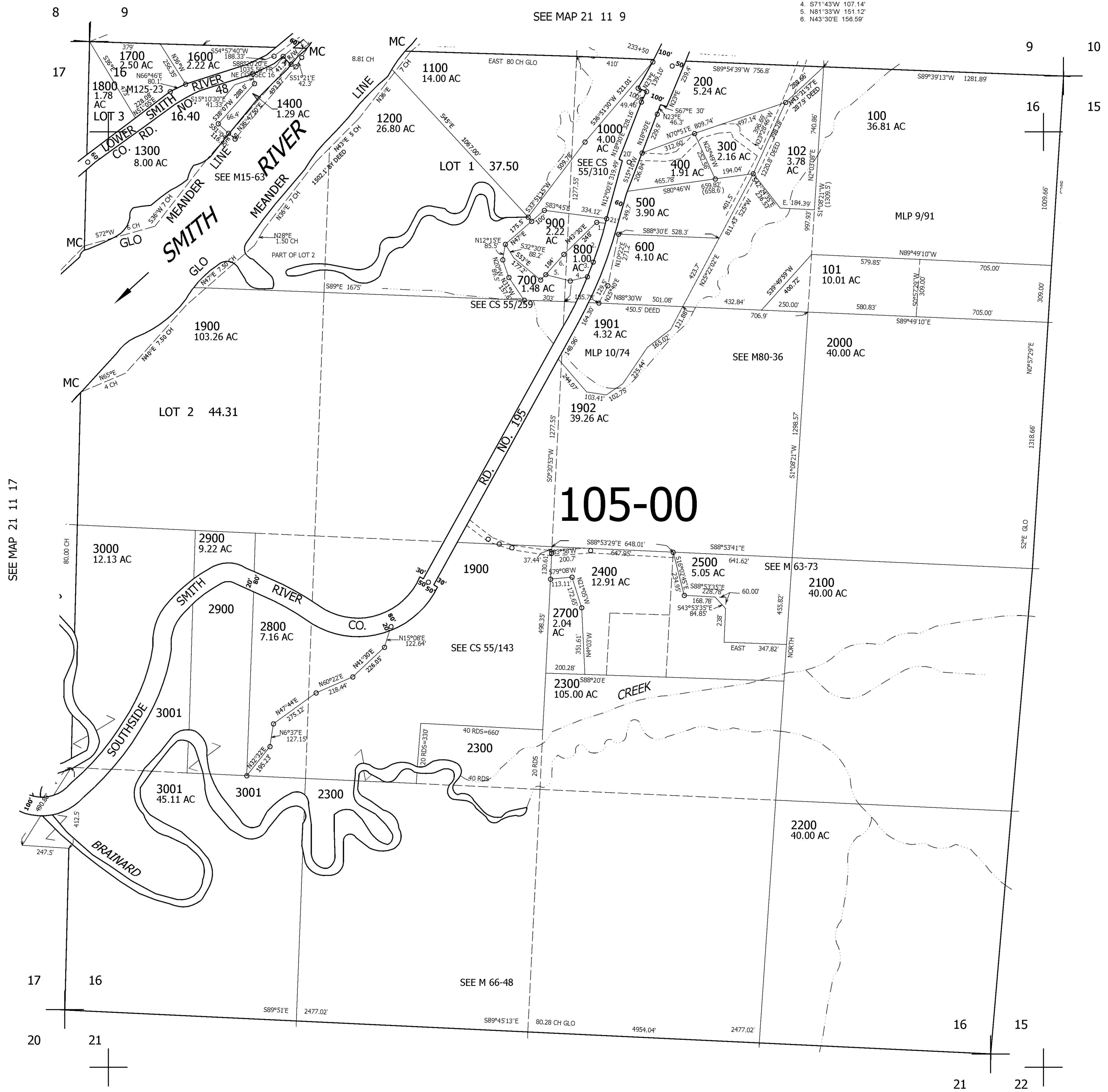
SEC.16 T21S. R.11W. W.M.
DOUGLAS COUNTY
1" = 400'

REVISED ON
5-10-07

21 11 16

PARCEL 800

1. S88°30'E 29.8' (39.8')
2. S9°W 45.1' 213.10'
3. S15°29'W 74'
4. S71°43'W 107.14'
5. N81°33'W 151.12'
6. N43°30'E 156.59'



105-00

CANCELLED NO'S
2600 2401 1500

SEE MAP 21 11 17

SEE MAP 21 11 15

17
20

16
15
21
22

SEE MAP 21 11 21

775,000

3,995,000

21 11 16