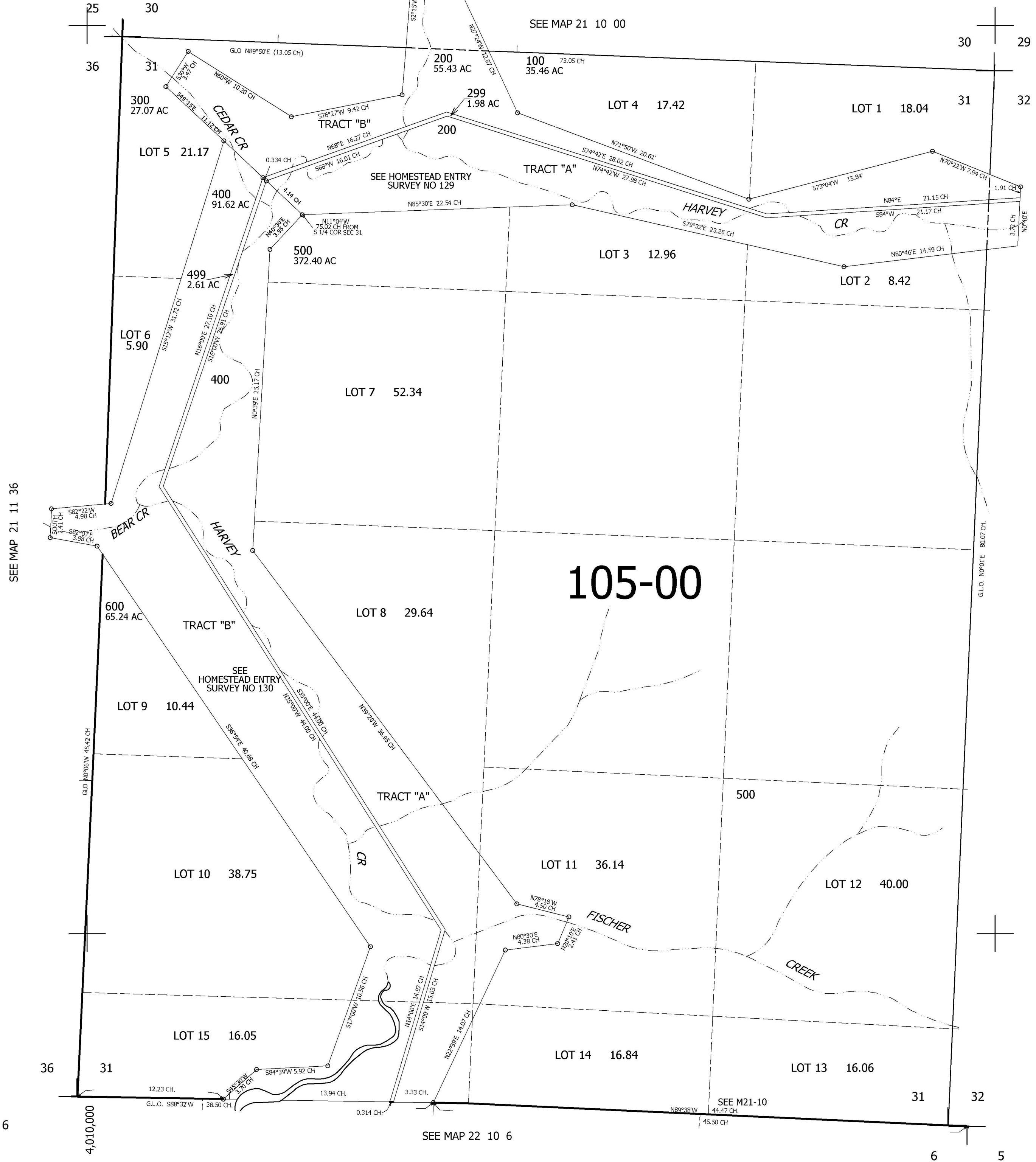


THIS MAP WAS PREPARED FOR ASSESSMENT PURPOSE ONLY.

SEC.31 T21S. R.10W. W.M.
DOUGLAS COUNTY
1" = 400'

REVISED ON

21 10 31



CANCELLED NO'S

759,000

1 6

SEE MAP 22 10 6

SEE M21-10

21 10 31

6 5