

THIS MAP WAS PREPARED FOR ASSESSMENT PURPOSE ONLY.

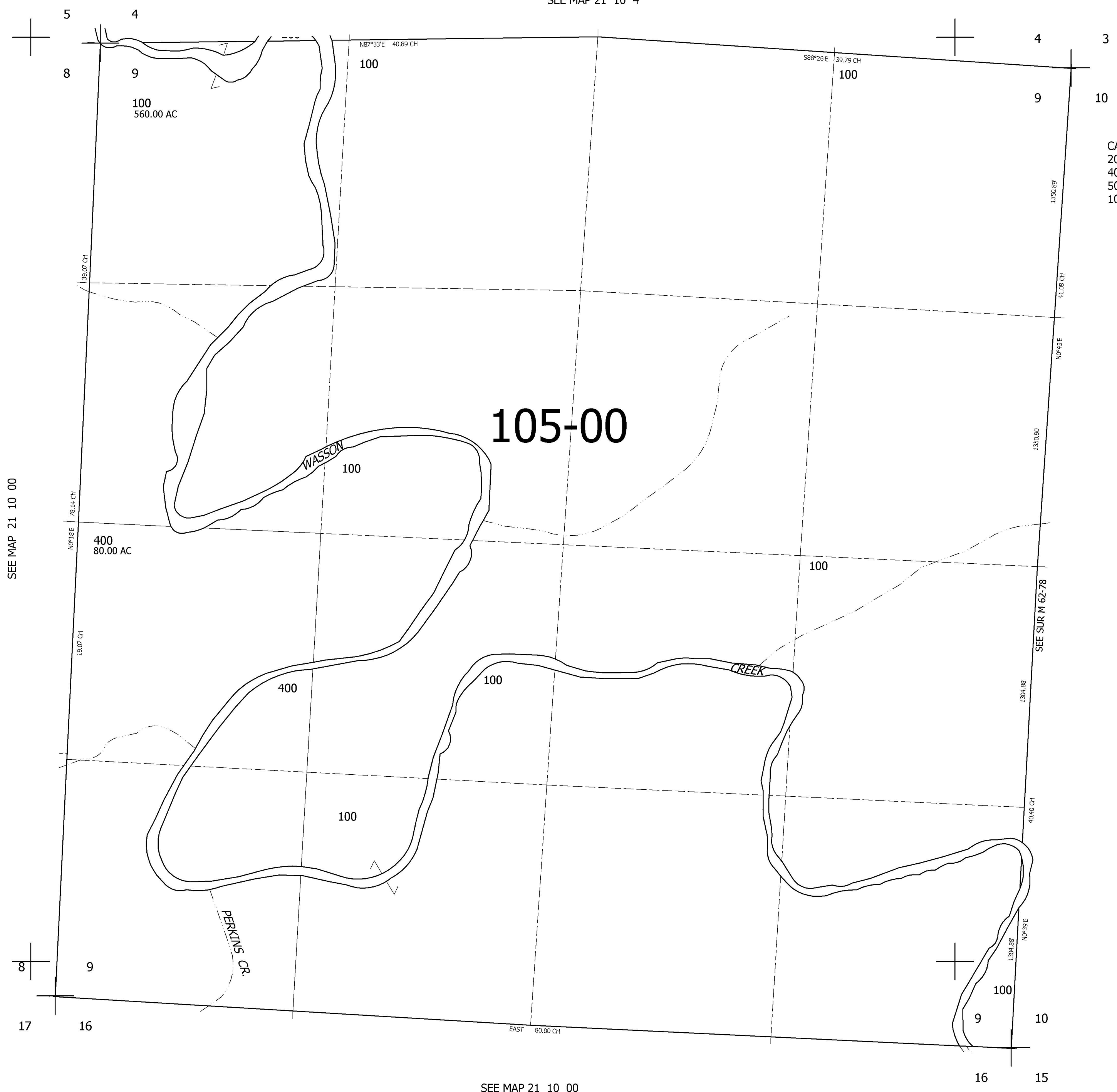
SEC.9 T21S. R.10W. W.M.
DOUGLAS COUNTY

1" = 400'

REVISED ON
4-29-96

21 10 9

SEE MAP 21 10 4



CANCELLED NO'S
200 200M1 300
401 401M1 500
500M1 100M2 100M3
100M1

SEE MAP 21 10 00

SEE MAP 21 10 00

SEE SUR M 62-78

779,000

SEE MAP 21 10 00

4,026,000

21 10 9