

THIS MAP WAS PREPARED FOR  
ASSESSMENT PURPOSE ONLY.

SEC.6 T21S. R.9W. W.M.  
DOUGLAS COUNTY  
1" = 2000'

REVISED ON  
4-26-96

21 9 6

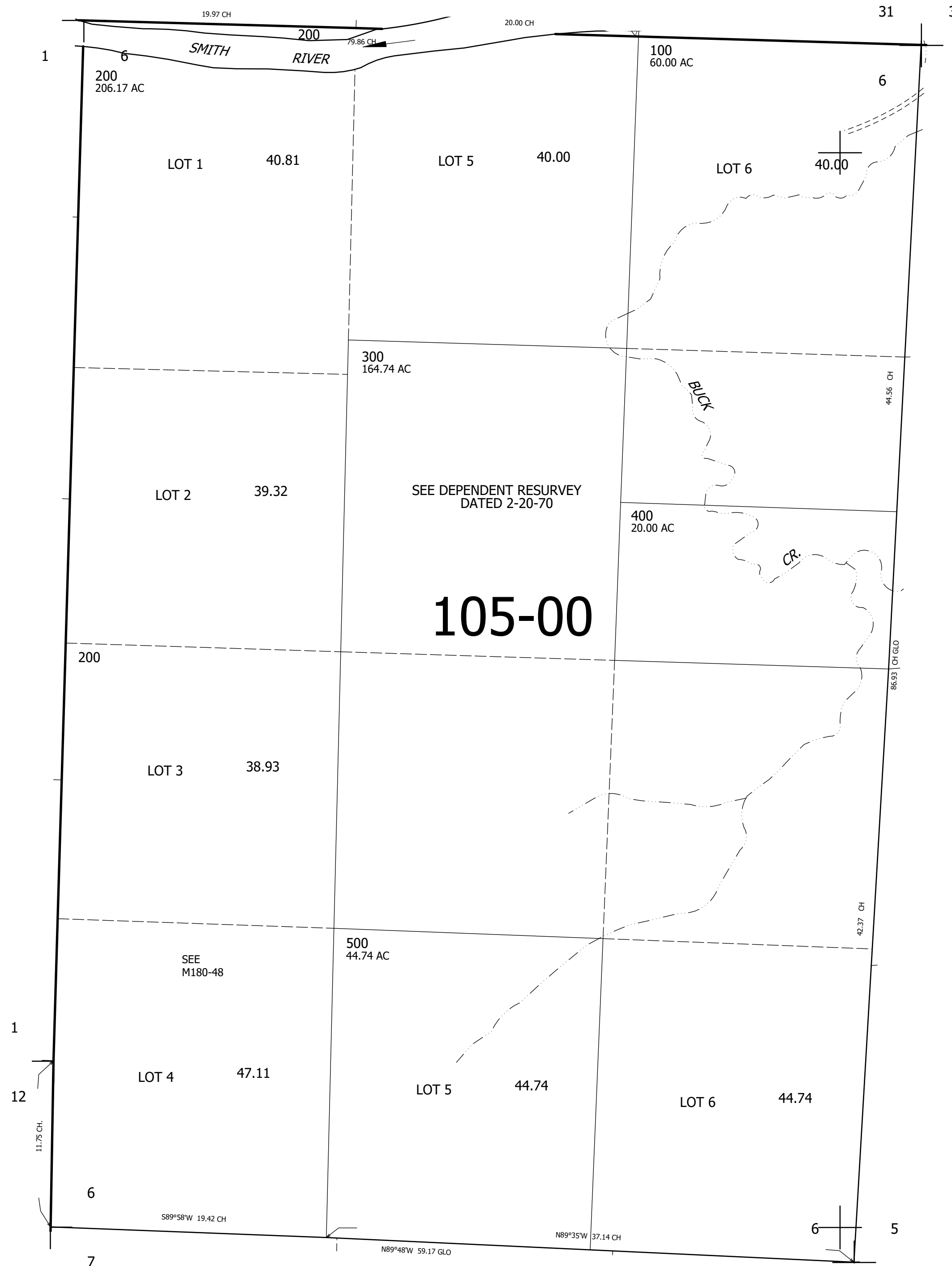
36 31

+

SEE MAP 20 9 31

SEE MAP 21 10 00

CANCELLED NO'S  
200M1 400M1



SEE MAP 21 9 00

783,000

SEE MAP 21 9 00

4,047,000

21 9 6