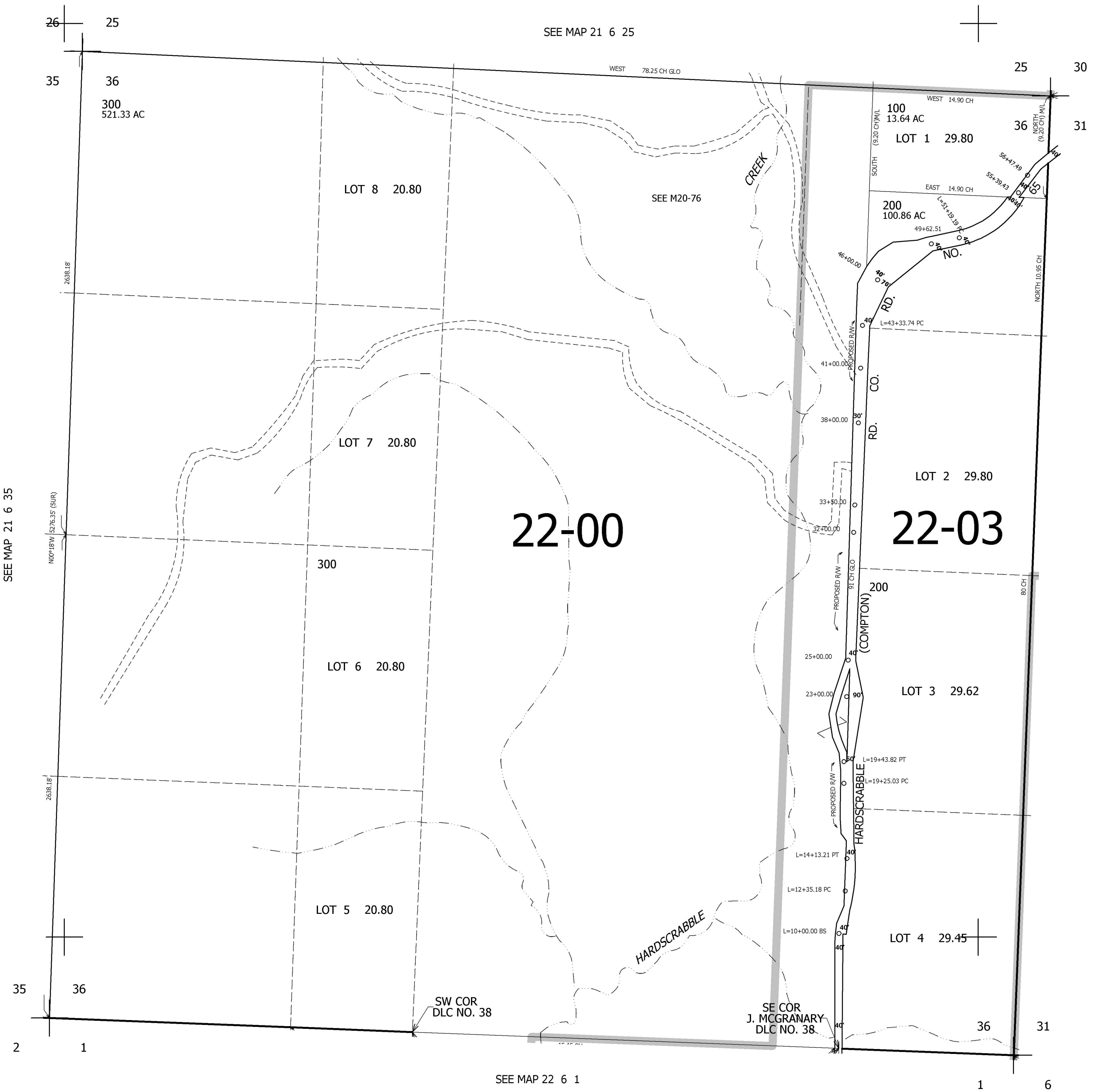


THIS MAP WAS PREPARED FOR ASSESSMENT PURPOSE ONLY.

SEC.36 T21S. R.6W. W.M.
DOUGLAS COUNTY
1" = 400'

REVISED ON
12-8-98



CANCELLED NO'S

SEE MAP 21 6 35

SEE MAP 21 5 31

SEE MAP 22 6 1

752,000

4,168,000