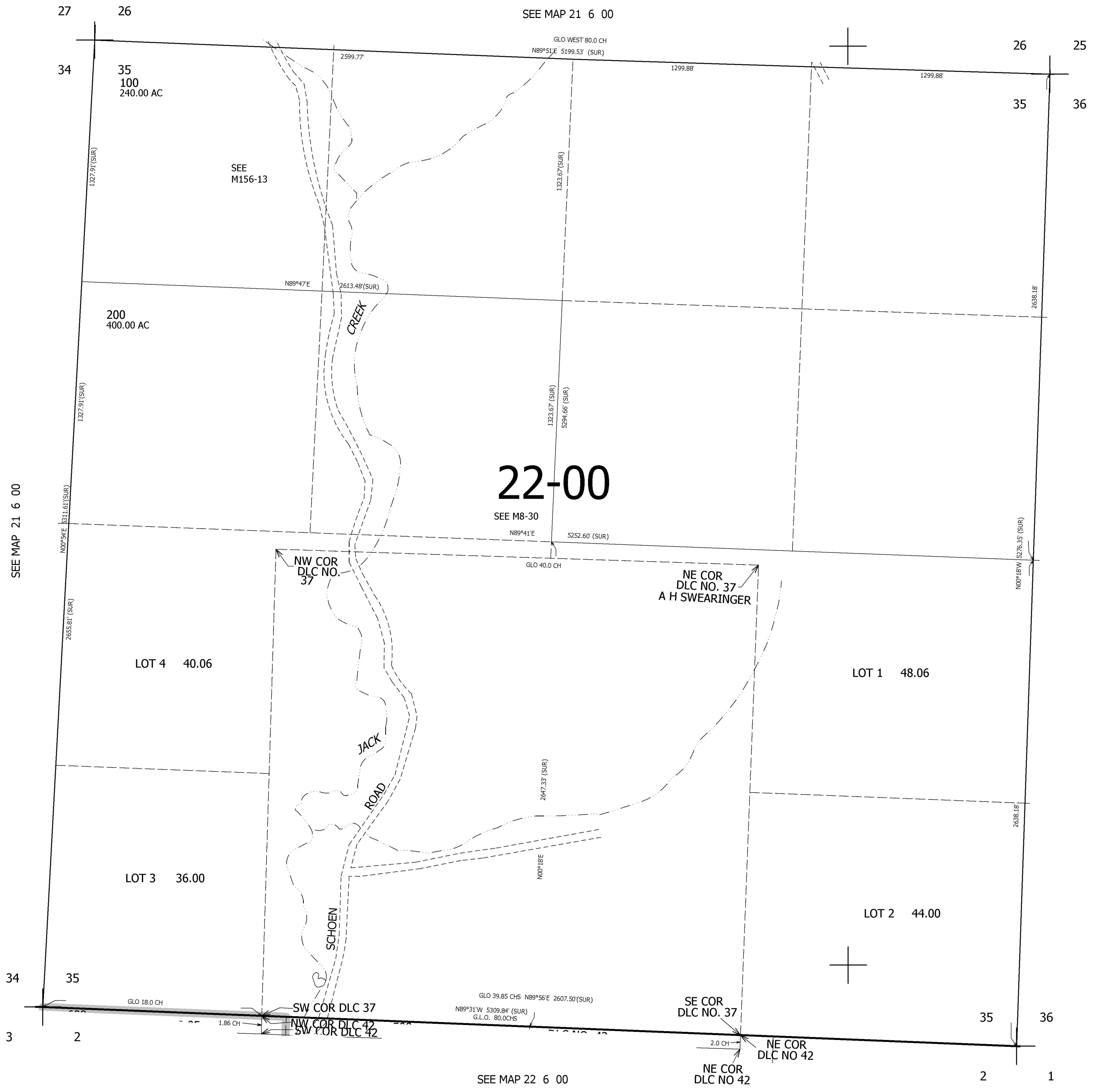


THIS MAP WAS PREPARED FOR ASSESSMENT PURPOSE ONLY.

SEC.35 T21S. R.6W. W.M.
DOUGLAS COUNTY
1" = 400'

REVISED ON

21 6 35



CANCELLED NO'S

SEE MAP 21 6 36

752,000

4,162,000

21 6 35