

THIS MAP WAS PREPARED FOR ASSESSMENT PURPOSE ONLY.

SEC.4 T21S. R.6W. W.M. DOUGLAS COUNTY

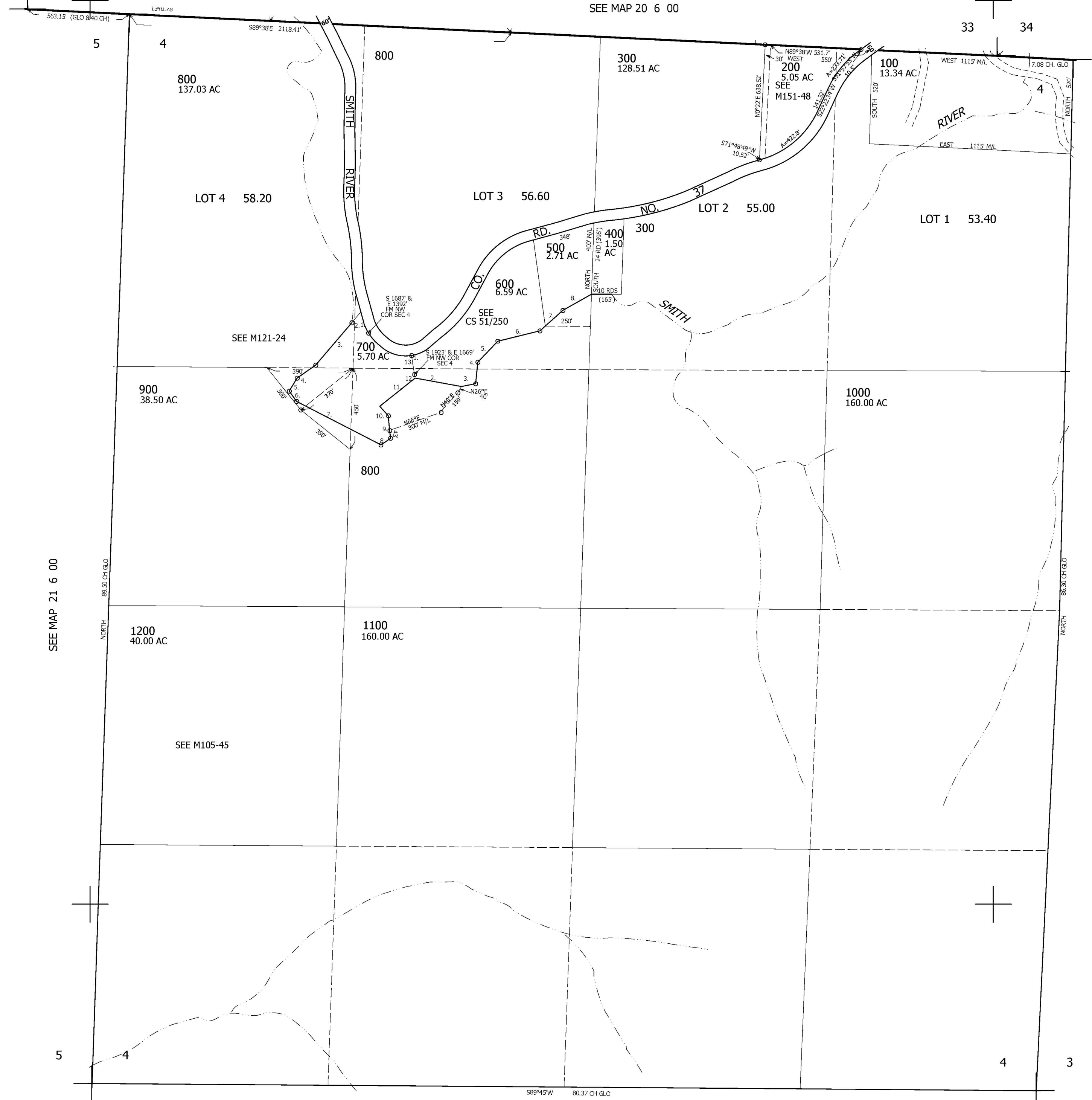
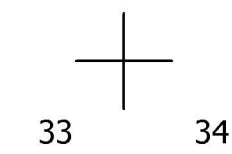
REVISED ON
8-18-08

21 6 4

1" = 400'

32 33

SEE MAP 20 6 00



CANCELLED NO'S
500M1 600M1 700M1

PARCEL 700

1. NWLY 90' M/L
2. S38°W 60' M/L
3. S38°W 300'
4. S53°W 125'
5. S29°W 85'
6. S38°E 70'
7. S85°E 525'
8. N53°E 65'
9. N8°W 125'
10. N44°W 70'
11. N49°E 250' M/L
12. N11°W 20' M/L
13. N11°W 109' M/L
14. NWLY 300' M/L

PARCEL 600 & POR. 500

1. S11°E TO RIVER
2. S82°E 260'
3. N77°E 80'
4. N4°E 120'
5. N41°E 160'
6. N74°E 240'
7. N46°E 170'
8. N58°E 180' M/L

SEE MAP 21 6 00

SEE MAP 21 6 00

779,000

5

9

SEE MAP 21 6 00

4,153,000

21 6 4