

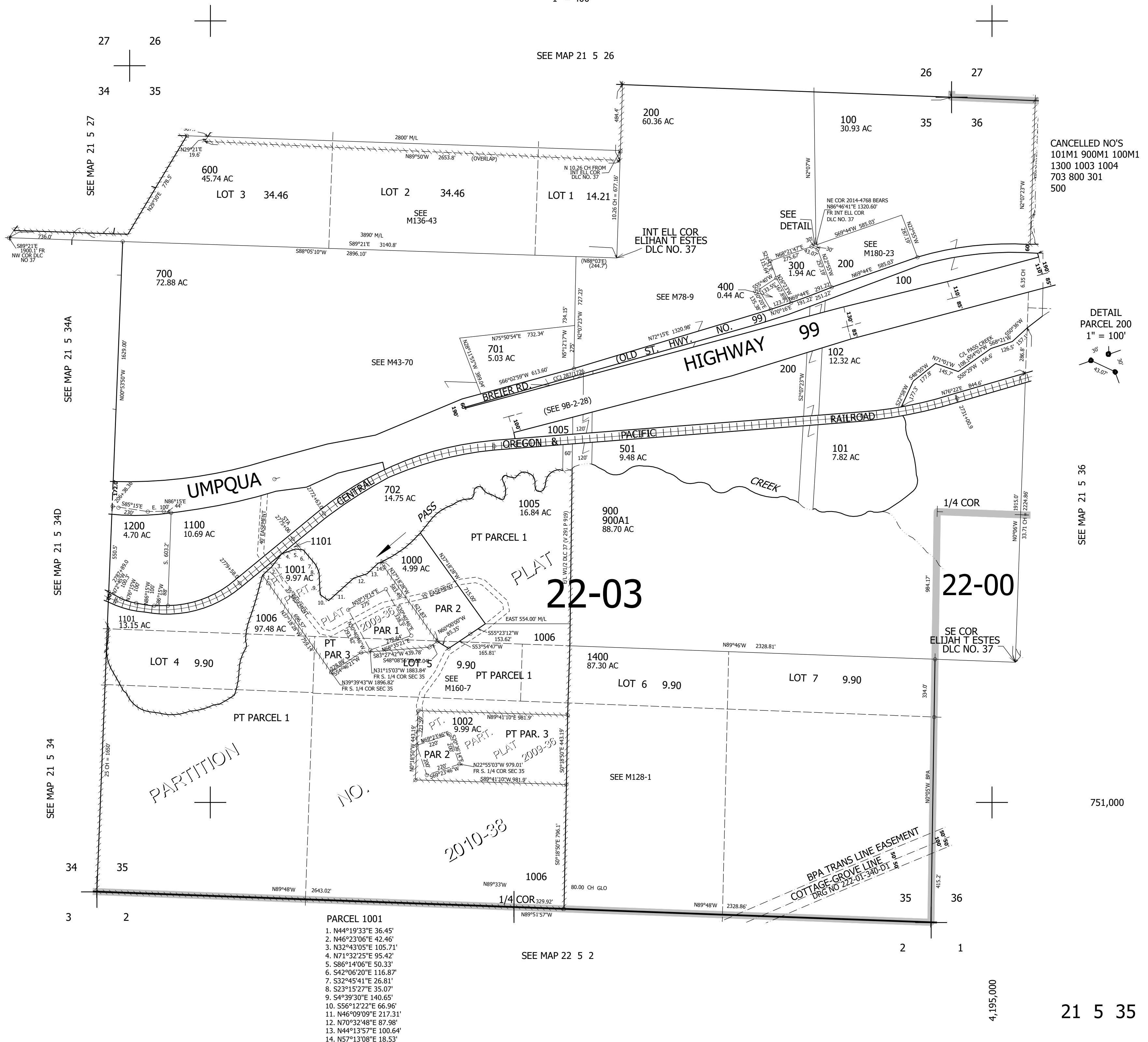
THIS MAP WAS PREPARED FOR ASSESSMENT PURPOSE ONLY.

SEC.35 T21S. R.5W. W.M. DOUGLAS COUNTY

1" = 400'

REVISED ON 2-1-22

21 5 35



CANCELLED NO'S  
101M1 900M1 100M1  
1300 1003 1004  
703 800 301  
500

DETAIL  
PARCEL 200  
1" = 100'

SEE MAP 21 5 36

751,000

21 5 35

PARCEL 1001

1. N44°19'33"E 36.45'
2. N46°23'06"E 42.46'
3. N32°43'05"E 105.71'
4. N71°32'25"E 95.42'
5. S86°14'06"E 50.33'
6. S42°06'20"E 116.87'
7. S32°45'41"E 26.81'
8. S23°15'27"E 35.07'
9. S4°39'30"E 140.65'
10. S56°12'22"E 66.96'
11. N46°09'09"E 217.31'
12. N70°32'48"E 87.98'
13. N44°13'57"E 100.64'
14. N57°13'08"E 18.53'

SEE MAP 22 5 2

4,195,000