

THIS MAP WAS PREPARED FOR ASSESSMENT PURPOSE ONLY.

SE1/4 SEC.34 T21S. R.5W. W.M. DOUGLAS COUNTY

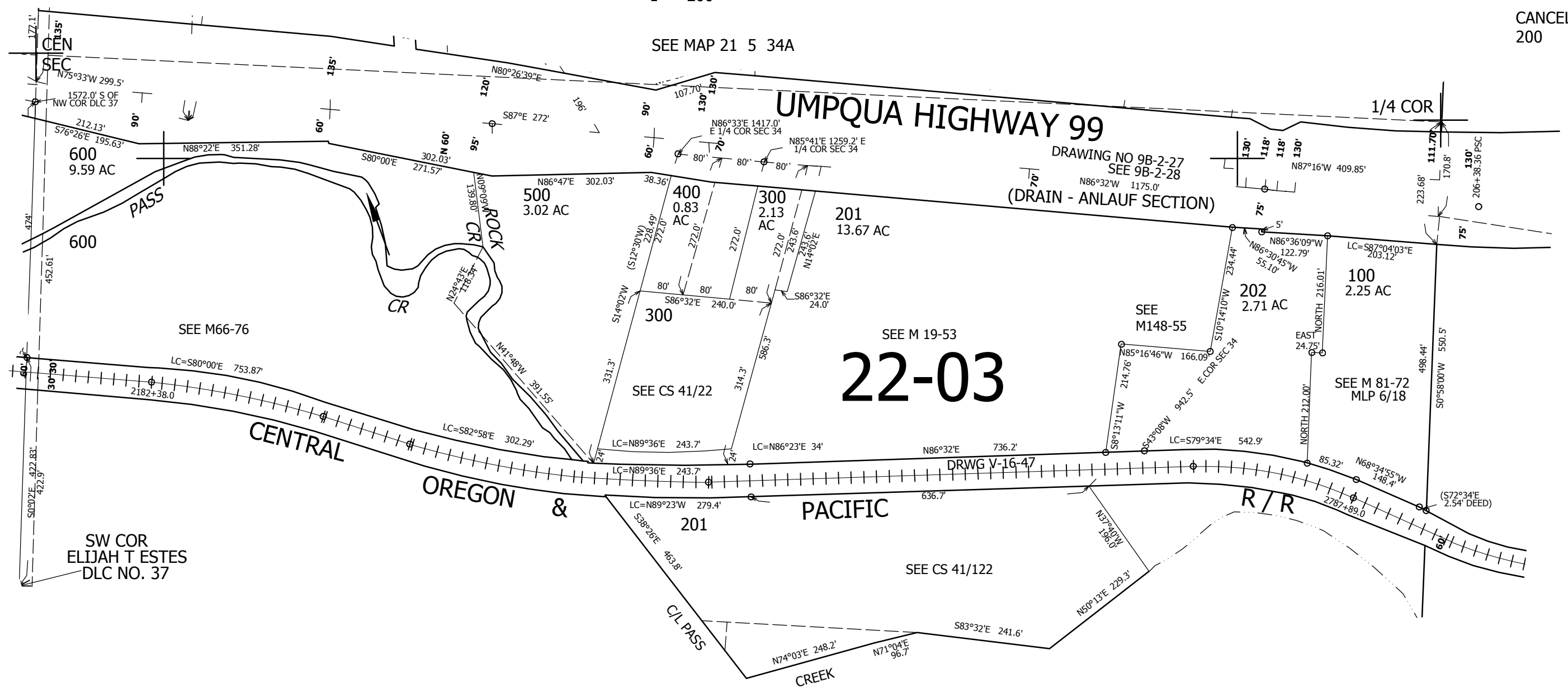
REVISED ON 7-25-17

1" = 200'

CANCELLED NO'S 200

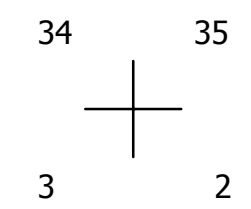
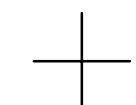
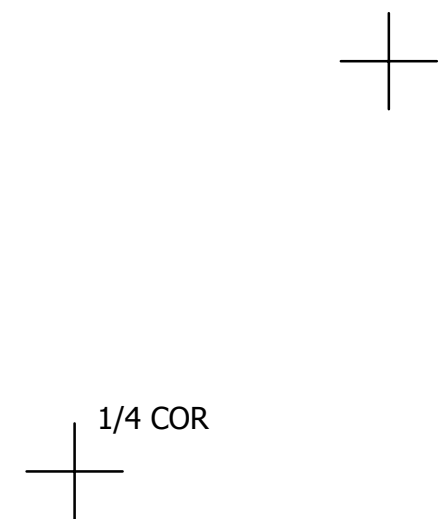
SEE MAP 21 5 34C

SEE MAP 21 5 35



SEE MAP 21 5 34

751,000



4,189,000