

THIS MAP WAS PREPARED FOR ASSESSMENT PURPOSE ONLY.

NE1/4 SEC.34 T21S. R.5W. W.M.
DOUGLAS COUNTY
1" = 200'

REVISED ON
2-24-21

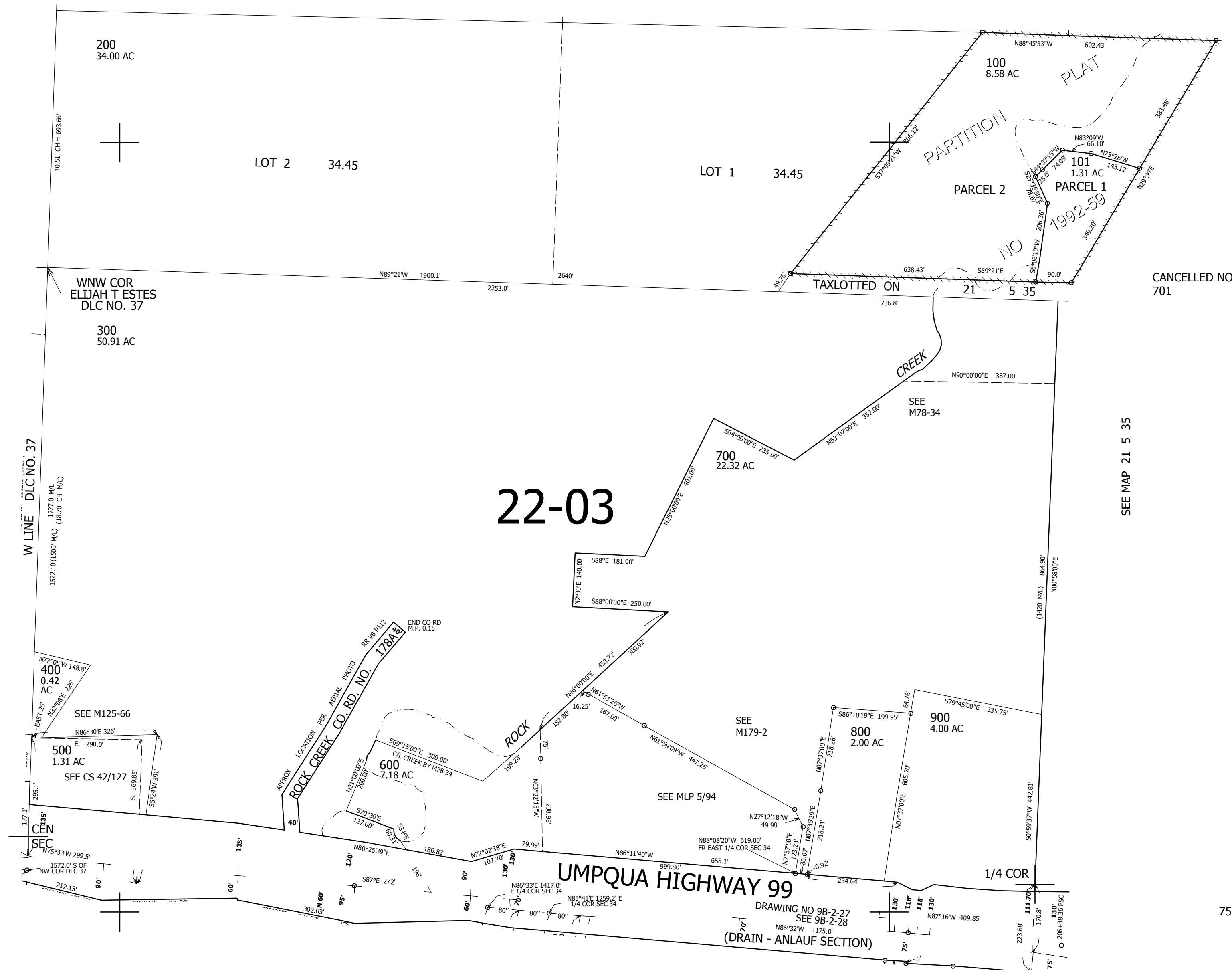
21 5 34A

1/4 COR

27 26
34 35

SEE MAP 21 5 27

SEE MAP 21 5 34B



CANCELLED NO'S
701

22-03

SEE MAP 21 5 35

753,000

SEE MAP 21 5 34D

4,189,000

21 5 34A