

THIS MAP WAS PREPARED FOR ASSESSMENT PURPOSE ONLY.

SE 1/4 SEC.33 T21S. R.5W. W.M.
DOUGLAS COUNTY
1" = 200'

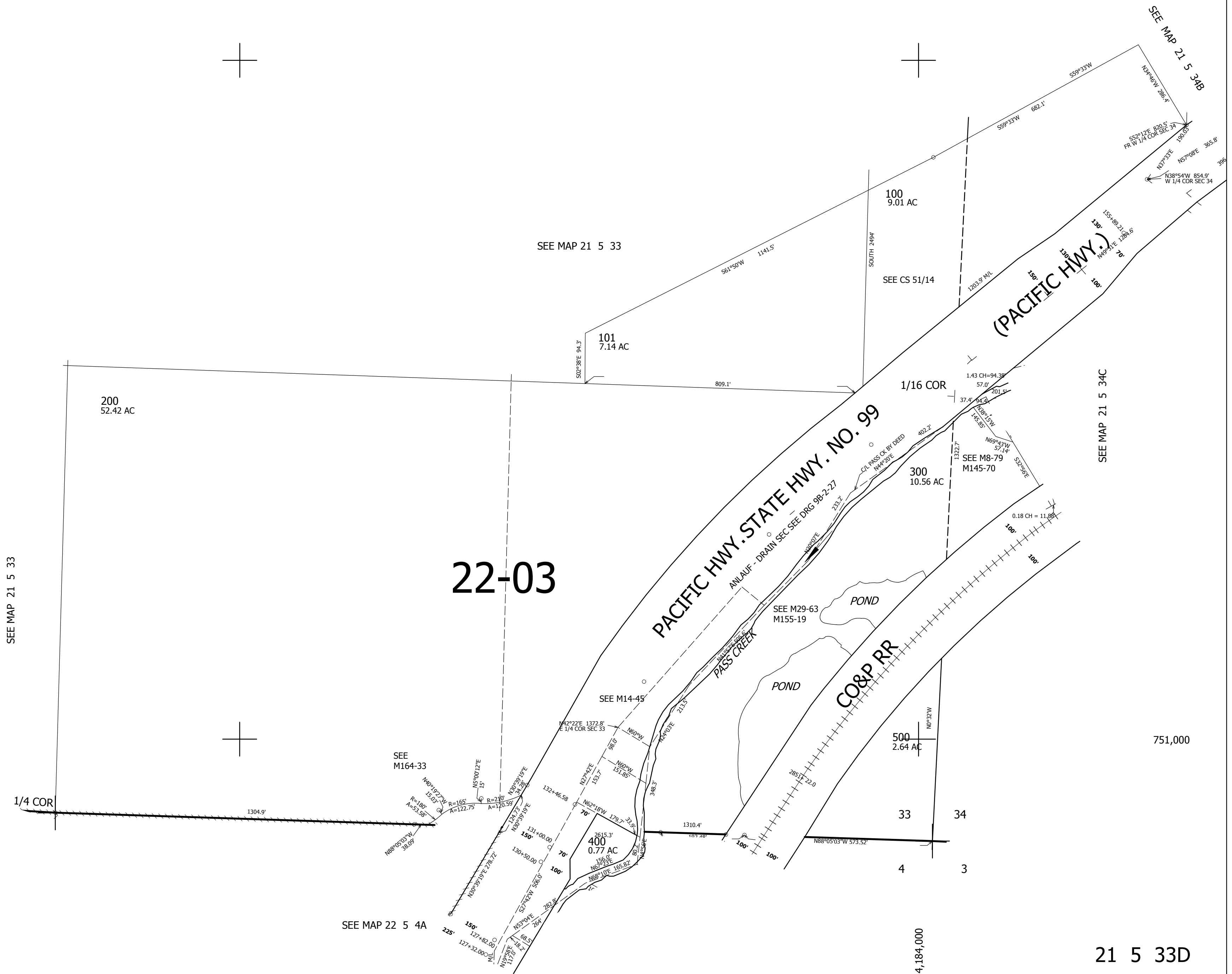
REVISED ON
10-5-16

21 5 33D

CEN|SEC

1/4|COR

CANCELLED NO'S
201



SEE MAP 21 5 34C

751,000

21 5 33D

4,184,000