

THIS MAP WAS PREPARED FOR ASSESSMENT PURPOSE ONLY.

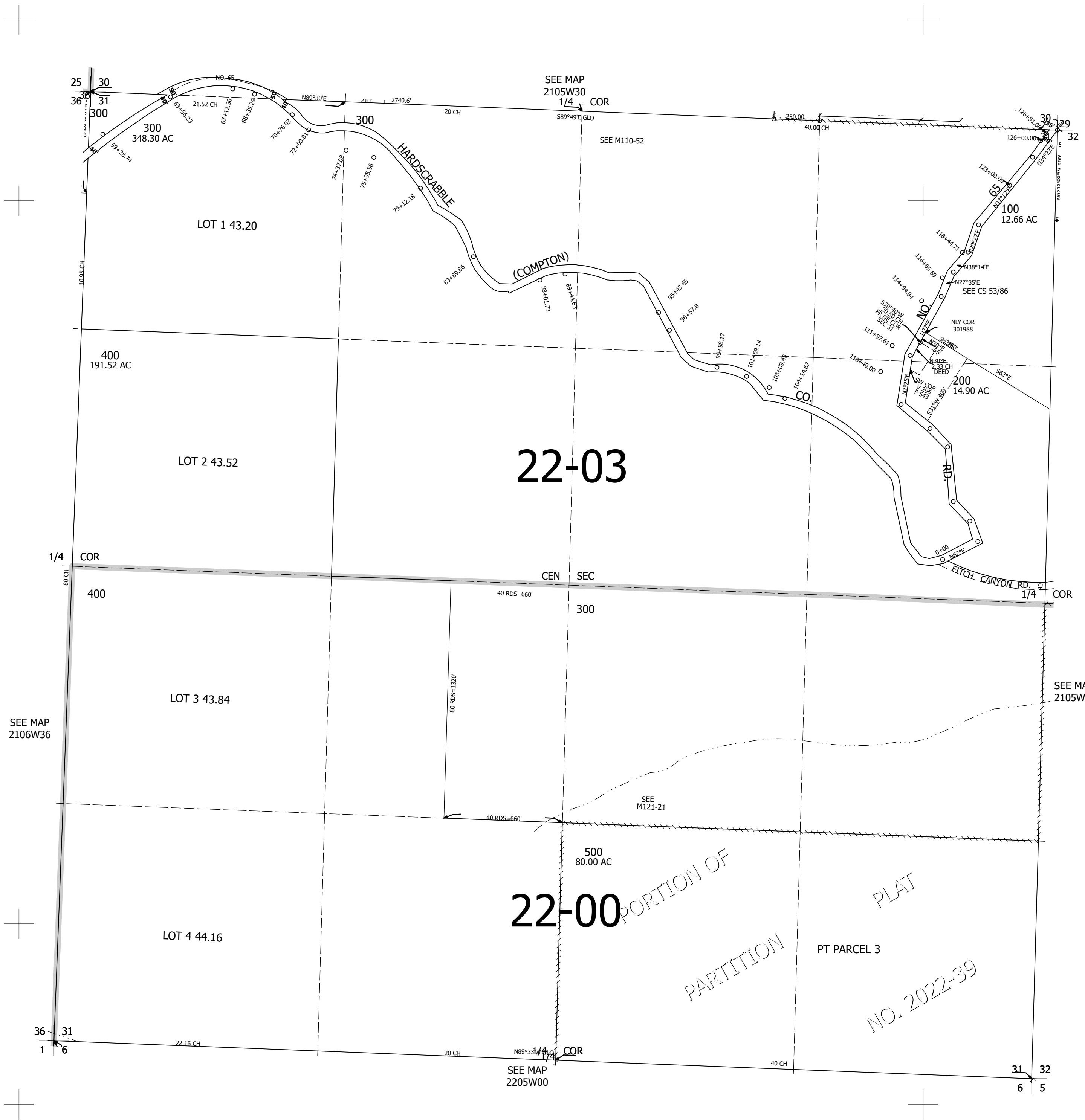
Upper Left:
123°21'10"W 43°42'35"N
4167094E 757447N ft

SEC.31 T.21S. R.05W. W.M.
DOUGLAS COUNTY
1" = 400'

Date Expired: 12/8/2022 3:18 PM

210531 &

CANCELLED NOS:



SEE MAP
2105W32

SEE MAP
2106W36

SEE MAP
2205W00

Lower Right:
123°19'22"W 43°41'28"N
4174847E 750425N ft

210531 &