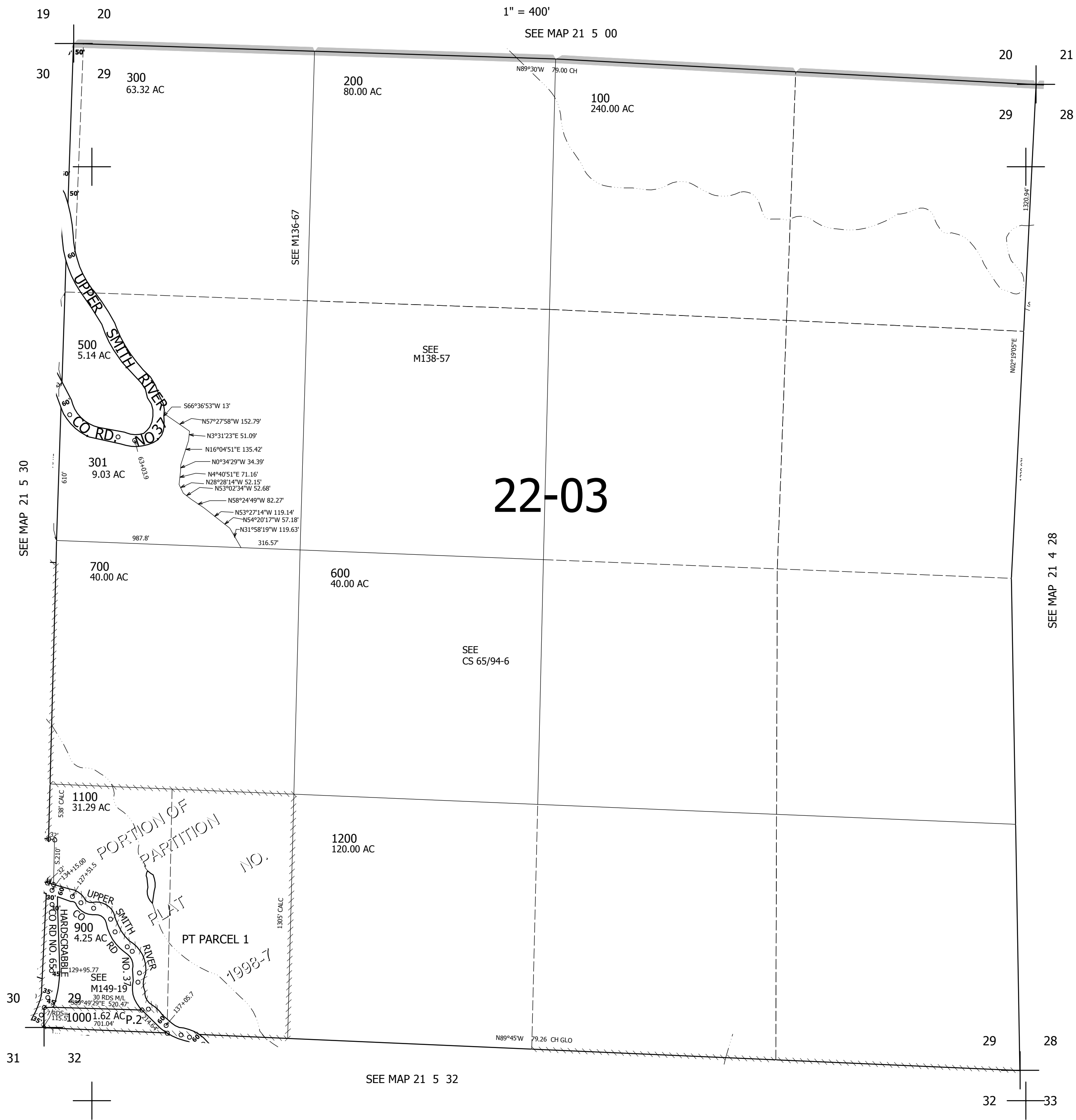


THIS MAP WAS PREPARED FOR ASSESSMENT PURPOSE ONLY.

SEC.29 T21S. R.5W. W.M. DOUGLAS COUNTY

REVISED ON 5-2-17

21 5 29



CANCELLED NO'S
800 100M1 500M1
1200M1 400 1101

22-03

756,000

21 5 29

4,179,000