

THIS MAP WAS PREPARED FOR ASSESSMENT PURPOSE ONLY.

Upper Left:
123°16'24"W 43°43'22"N
4188232E 761501N ft

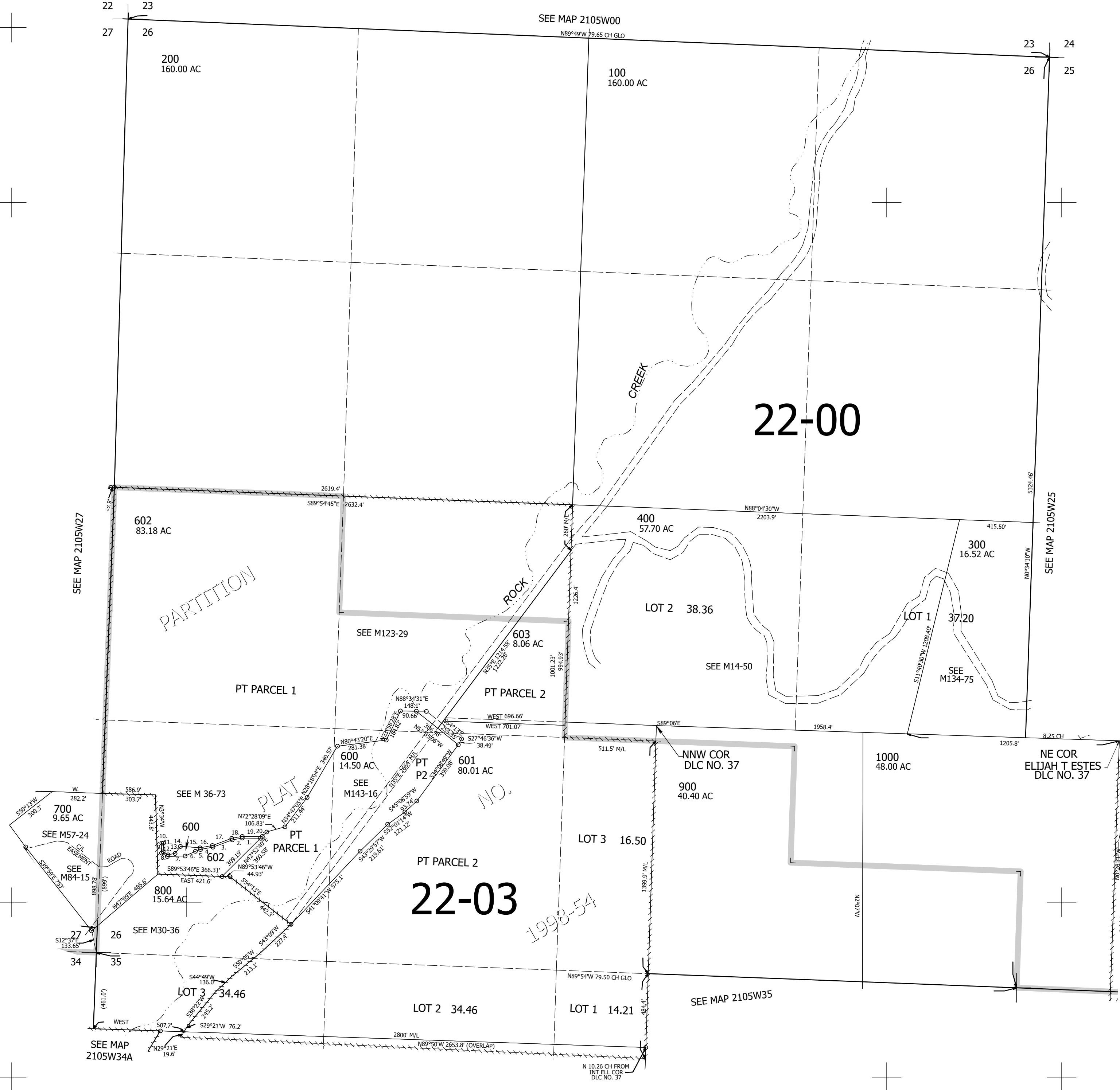
SEC.26 T.21S. R.05W. W.M.
DOUGLAS COUNTY
1" = 400'

Date Exported 2024-03-27

210526

CANCELLED NOS:

- PARCEL 600
1. S88°07'20"W 103.53'
 2. S77°24'56"W 58.64'
 3. S67°24'17"W 118.31'
 4. S77°22'21"W 72.37'
 5. S67°52'58"W 29.97'
 6. S62°51'21"W 65.93'
 7. S86°27'46"W 100.55'
 8. N60°50'32"E 40.06'
 9. N0°14'15"W 55.56'
 10. S89°53'46"E 10'
 11. S0°14'15"E 49.65'
 12. S60°50'32"E 32.23'
 13. N75°54'03"E 41.52'
 14. N35°38'41"E 50.4'
 15. S88°15'51"E 112.09'
 16. N77°22'21"E 71.29'
 17. N67°24'17"E 118.31'
 18. N77°24'56"E 60.45'
 19. N88°07'20"E 114.38'
 20. S42°52'40"W 37.31' DEED 39.3' SURVEY



210526

Lower Right:
123°14'34"W 43°42'16"N
4196081E 754545N ft