

THIS MAP WAS PREPARED FOR ASSESSMENT PURPOSE ONLY.

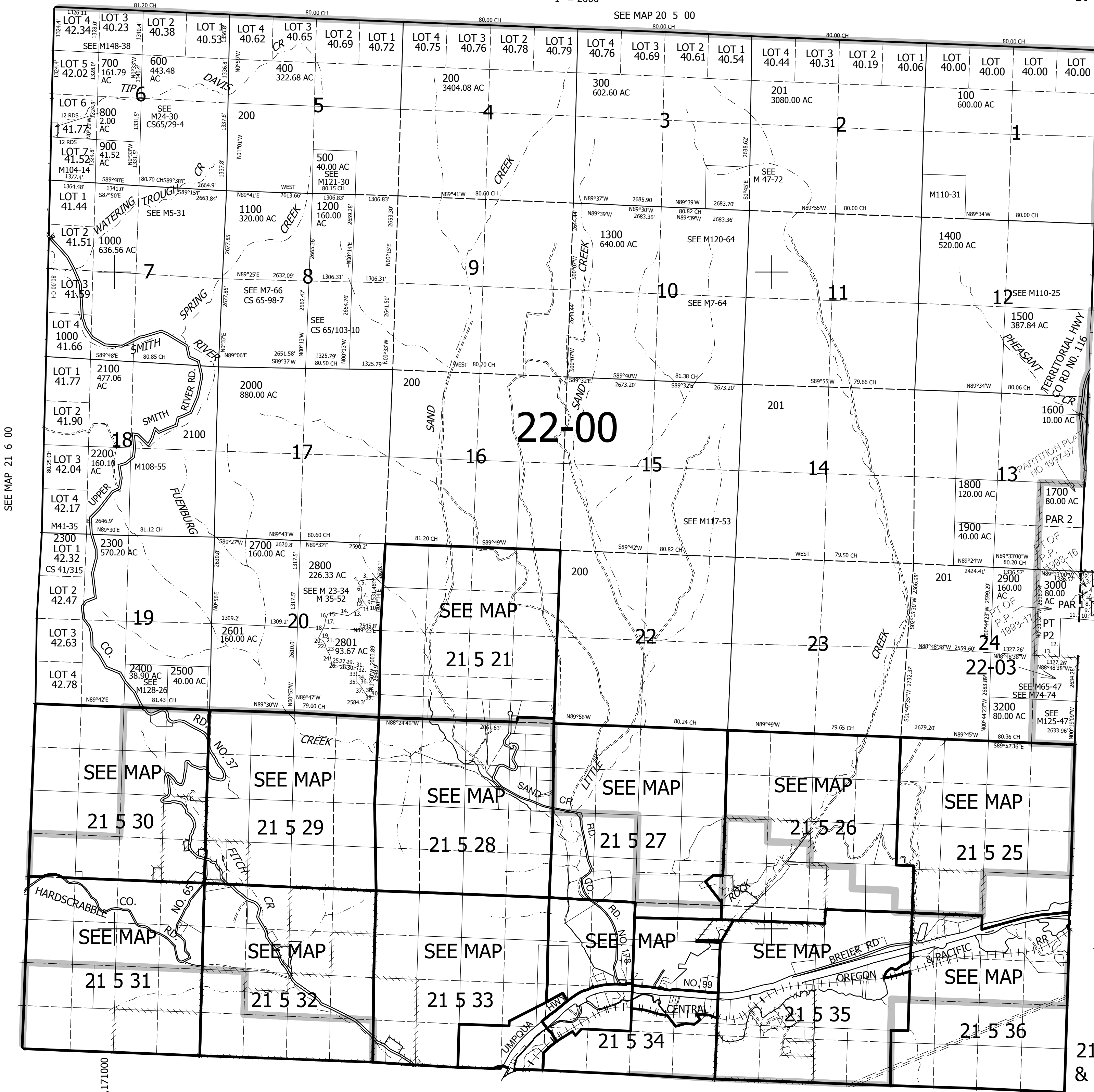
T21S. R.5W. W.M. DOUGLAS COUNTY

REVISED ON 10-5-16

21 5 00 & INDEX

1" = 2000'

SEE MAP 20 5 00



CANCELLED NO'S
 1000A1 3100 1300M1
 1400M1 2800M1 2801M1
 900M1 2600 3001

SEE MAP 21 4 00

PARCEL 3000
 1. S88°22'03"E 80.95'
 2. S88°22'03"E 284.16'
 3. S0°02'43"E 426.02'
 4. S89°59'01"E 259.26'
 5. S1°22'49"W 298.8'
 6. S12°52'49"W 162.33'
 7. N89°58'24"W 215.92'
 8. SOUTH 442.5'
 9. N89°36'41"E 115'
 10. S0°18'51"E 126.41'
 11. N88°48'38"W 1035.61'
 12. S8°31'32"E 1181.67'
 13. N88°48'38"W 769.09'

PARCEL 2801
 1. N66°04'45"W 100.54'
 2. N88°43'15"W 4414.68'
 3. S76°49'54"W 264.33'
 4. S33°40'45"W 571.11'
 5. S38°39'E 181.99'
 6. S1°09'W 199.37'
 7. S18°38'E 149.5'
 8. S38°06'E 119.8'
 9. S47°28'30"E 168.44'
 10. S39°30'W 55.55'
 11. N75°22'30"W 174.64'
 12. S67°06'45"W 90.62'
 13. S52°2'15"W 436.46'
 14. N81°16'30"W 440.77'
 15. S81°26'30"W 203.81'
 16. S13°28'30"W 282.9'
 17. S6°02'15"W 183.59'
 18. S16°12'15"W 468.13'
 19. S75°41'45"E 61.76'
 20. S55°35'45"E 106.72'
 21. S35°53'30"E 117.23'
 22. S21°36'30"E 146.36'
 23. S27°41'15"E 229.7'
 24. S19°08'45"E 118.55'
 25. S16°18'45"E 109.34'
 26. S82°20'15"E 187.17'
 27. N73°40'45"E 190.08'
 28. N82°23'15"E 93.34'
 29. S65°44'15"E 76.76'
 30. S86°00'45"E 106.95'
 31. S76°15'45"E 218.71'
 32. S14°55'45"E 180.23'
 33. S4°08'45"E 132.17'
 34. S7°28'30"E 103.47'
 35. S43°51'15"E 80.09'
 36. S48°45'15"E 93'
 37. S34°56'45"E 226.97'
 38. S56°43'45"E 133.62'
 39. S86°14'45"E 206.34'
 40. S88°10'30"E 148.29'

755,000

21 5 00 & INDEX

SEE MAP 22 5 00

SEE MAP 21 6 00

4,171,000