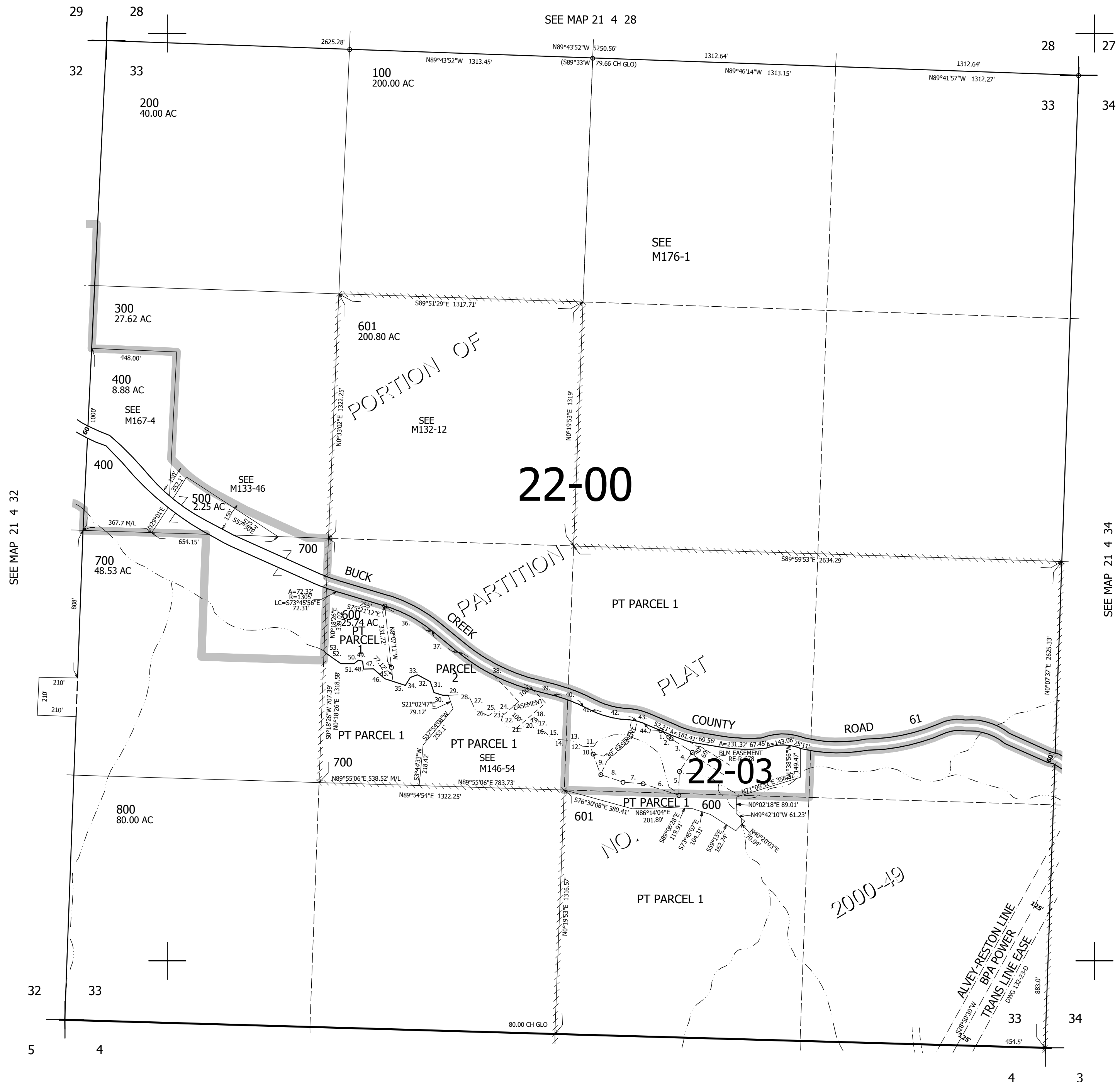


THIS MAP WAS PREPARED FOR ASSESSMENT PURPOSE ONLY.

SEC.33 T21S. R.4W. W.M.  
DOUGLAS COUNTY  
1" = 400'

REVISED ON  
6-22-07

21 4 33



CANCELLED NO'S  
602 603 604

PARCEL 600

1. S52°48'26"E 54.97'
2. A=15.35' R=134.59'
3. S59°20'26"E 135.34'
4. S31°46'58"W 124.45'
5. S0°31'40"E 128.12'
6. N74°14'39"W 202.78'
7. N87°03'47"W 108.93'
8. N73°06'05"W 126.82'
9. N21°53'52"W 117.39'
10. N21°53'52"W 42.2'
11. N87°57'14"W 43.1'
12. N63°28'19"W 52.76'
13. N75°40'29"W 23.63'
14. N88°30'44"W 90.67'
15. N50°20'50"W 60.98'
16. N72°26'18"W 49.43'
17. N16°10'27"E 48.73'
18. N61°50'48"W 27.57'
19. S55°44'28"W 34.41'
20. S39°41'43"W 56.76'
21. N85°06'39"W 80.02'
22. N43°31'37"W 48.05'
23. N16°20'55"E 38.12'
24. N59°11'50"W 39.46'
25. S53°45'11"W 57.79'
26. N66°16'16"W 79.9'
27. N26°10'10"W 73.22'
28. N74°31'46"W 42.73'
29. S86°21'40"W 102.32'
30. N74°17'03"W 50.26'
31. N21°15'57"W 62.18'
32. N63°21'25"W 78.12'
33. S67°16'39"W 42.44'
34. S29°25'13"W 49.52'
35. N73°51'53"W 70.03'
36. A=291.1' R=735'
37. S52°39'38"E 289.21'
38. A=459.23' R=1060'
39. S77°29'E 108'
40. A=175.34' R=865'
41. S65°52'09"E 175.04'
42. A=197.21' R=490'
43. S77°23'57"E 195.88'
44. S78°53'29"E 97.61'
45. S68°51'13"E 96.14'
46. N173°51'53"W 46.11'
47. N51°21'21"W 81.57'
48. S86°59'48"W 53.8'
49. N5°10'56"W 45.92'
50. N86°34'20"W 25.2'
51. S47°58'30"W 29.53'
52. S88°09'02"W 72.06'
53. N56°43'12"W 99.07'
54. N38°18'51"W 12.71'

SEE MAP 21 4 32

SEE MAP 21 4 34

SEE MAP 22 4 00

750,000

4,216,000

21 4 33