

THIS MAP WAS PREPARED FOR ASSESSMENT PURPOSE ONLY.

SW1/4 SEC.30 T21S. R.4W. W.M. DOUGLAS COUNTY

1" = 200'

REVISED ON 10-5-16

21 4 30C

CANCELLED NO'S
1701 1701M1 401
1101 400M1 1700M1

1/4 COR

SEE MAP 21 4 30B

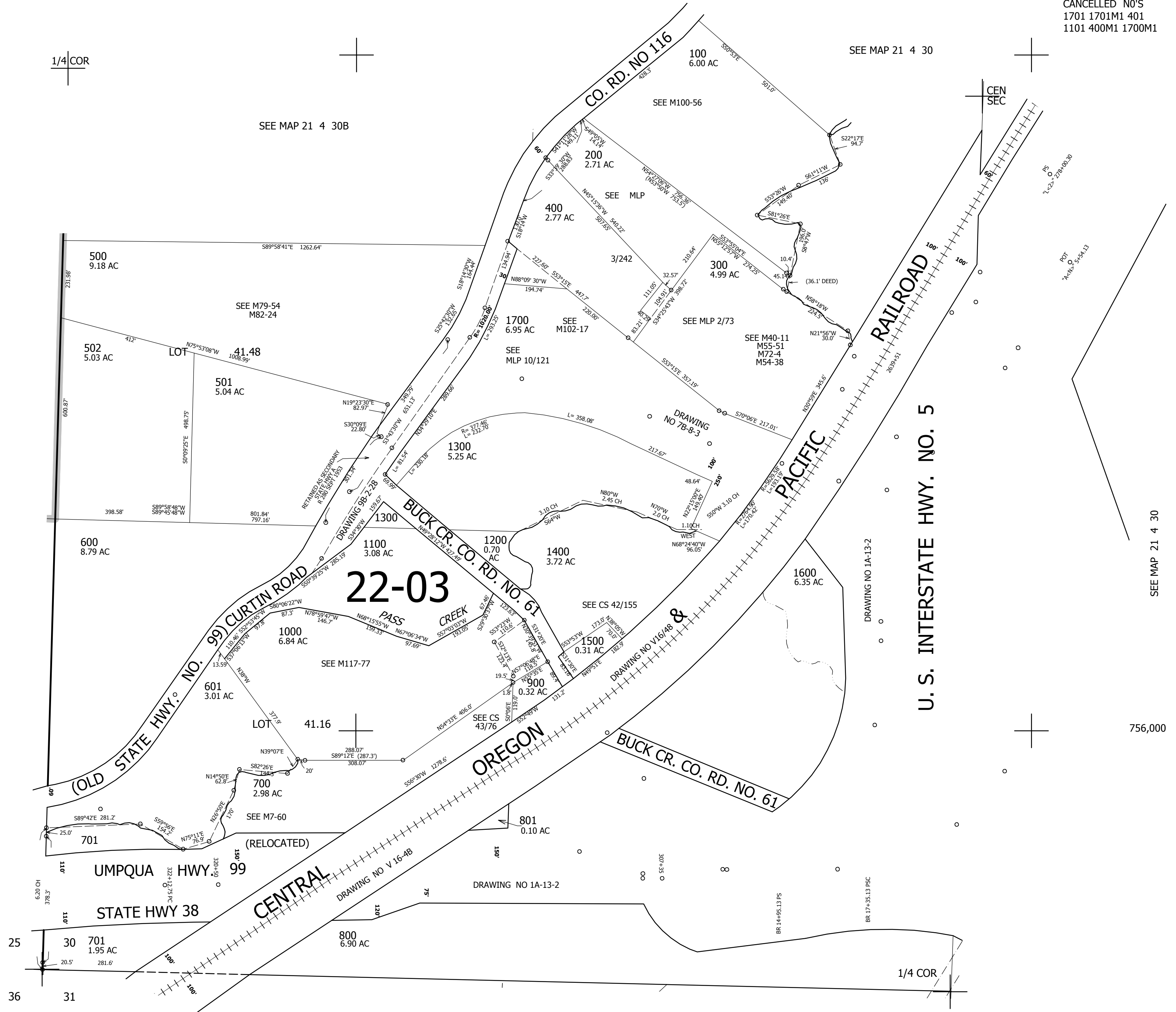
SEE MAP 21 4 30

CEN SEC

SEE MAP 21 5 25

SEE MAP 21 4 30

756,000



SEE MAP 21 4 31

4,203,000

21 4 30C