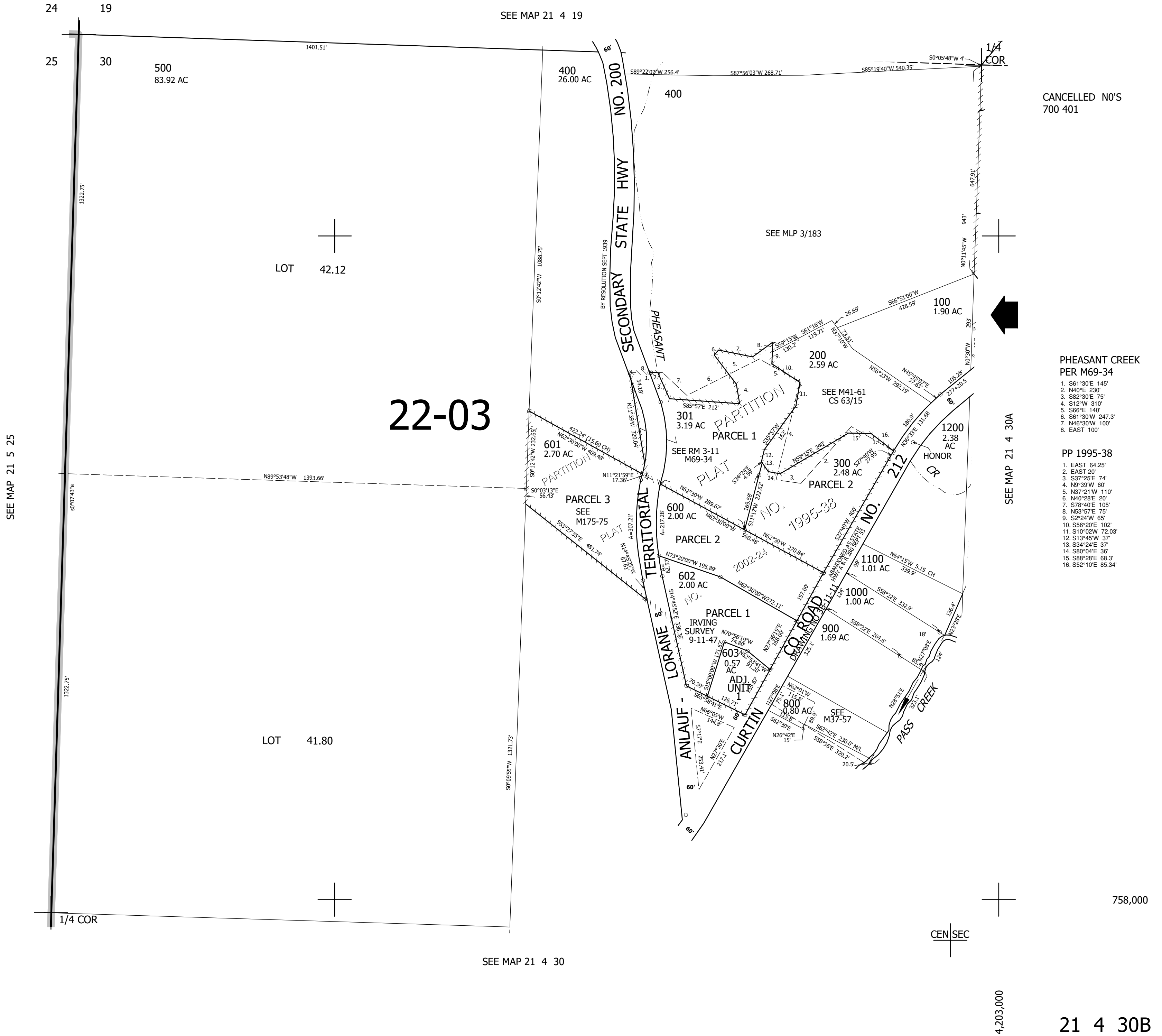


THIS MAP WAS PREPARED FOR ASSESSMENT PURPOSE ONLY.

NW1/4 SEC.30 T21S. R.4W. W.M.
DOUGLAS COUNTY
1" = 200'

REVISED ON
6-25-14

21 4 30B



CANCELLED NO'S
700 401

PHEASANT CREEK
PER M69-34

1. S61°30'E 145'
2. N40°E 230'
3. S82°30'E 75'
4. S12°W 310'
5. S66°E 140'
6. S61°30'W 247.3'
7. N46°30'W 100'
8. EAST 100'

PP 1995-38

1. EAST 64.25'
2. EAST 20'
3. S37°25'E 74'
4. N9°39'W 60'
5. N37°21'W 110'
6. N40°28'E 20'
7. S78°40'E 105'
8. N53°57'E 75'
9. S2°24'W 65'
10. S58°20'E 102'
11. S10°02'W 72.03'
12. S13°45'W 37'
13. S34°24'E 37'
14. S80°04'E 36'
15. S88°28'E 68.3'
16. S52°10'E 85.34'

SEE MAP 21 4 30A

758,000

4,203,000

21 4 30B