

THIS MAP WAS PREPARED FOR ASSESSMENT PURPOSE ONLY.

Upper Left:
123°13'13"W 43°43'22"N
4202280E 760991N ft

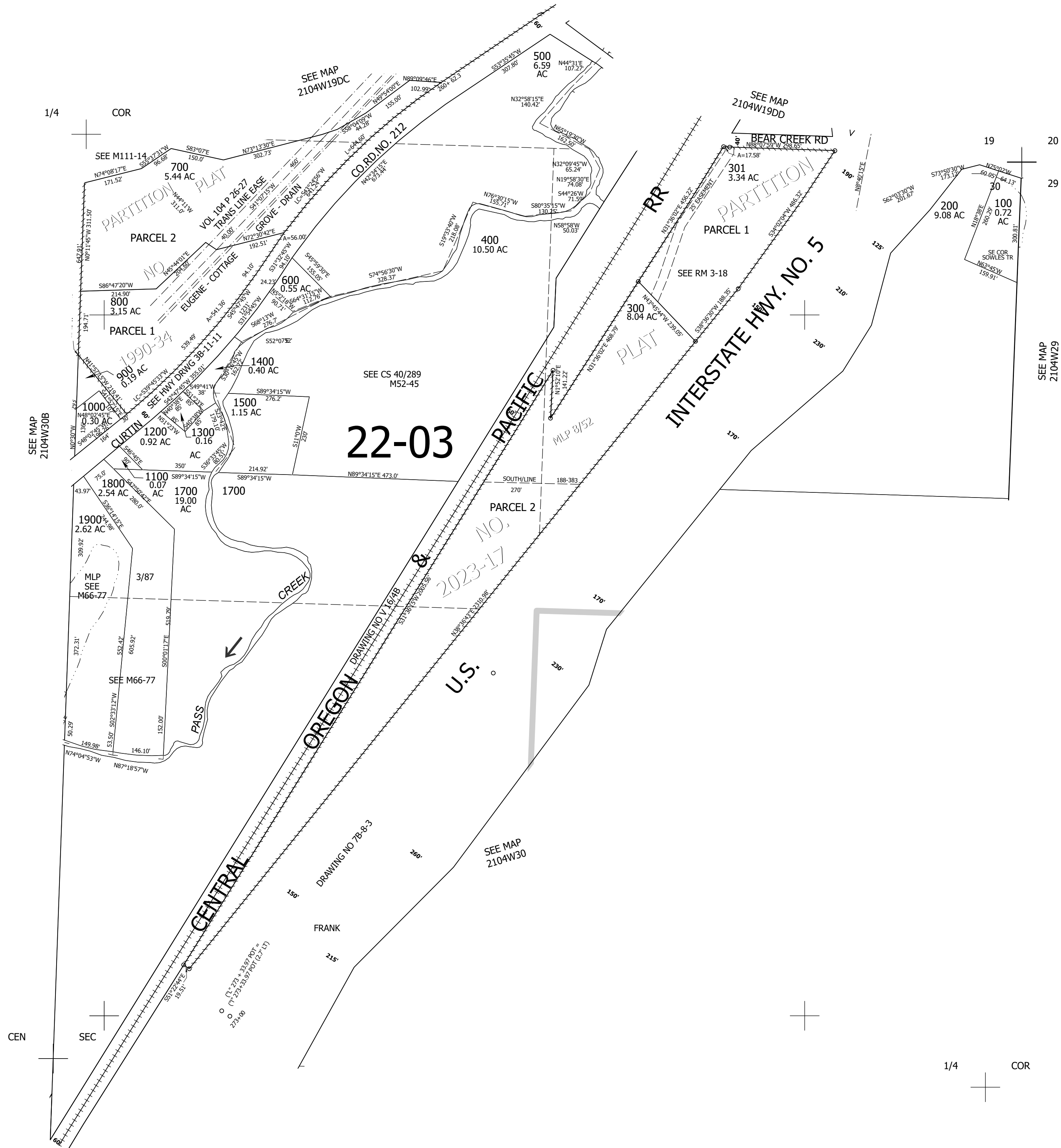
NE1/4 SEC.30 T.21S. R.04W. W.M.
DOUGLAS COUNTY
1" = 200'

Date Exported 2023-06-26

210430A

&

CANCELLED NOS:



SEE MAP 2104W29

SEE MAP 2104W30B

SEE MAP 2104W30

19

20

29

1/4

COR

SEE MAP 2104W29

210430A

&

Lower Right:
123°12'18"W 43°42'49"N
4206205E 757513N ft