

THIS MAP WAS PREPARED FOR ASSESSMENT PURPOSE ONLY.

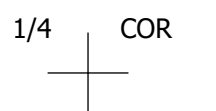
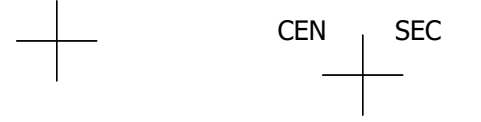
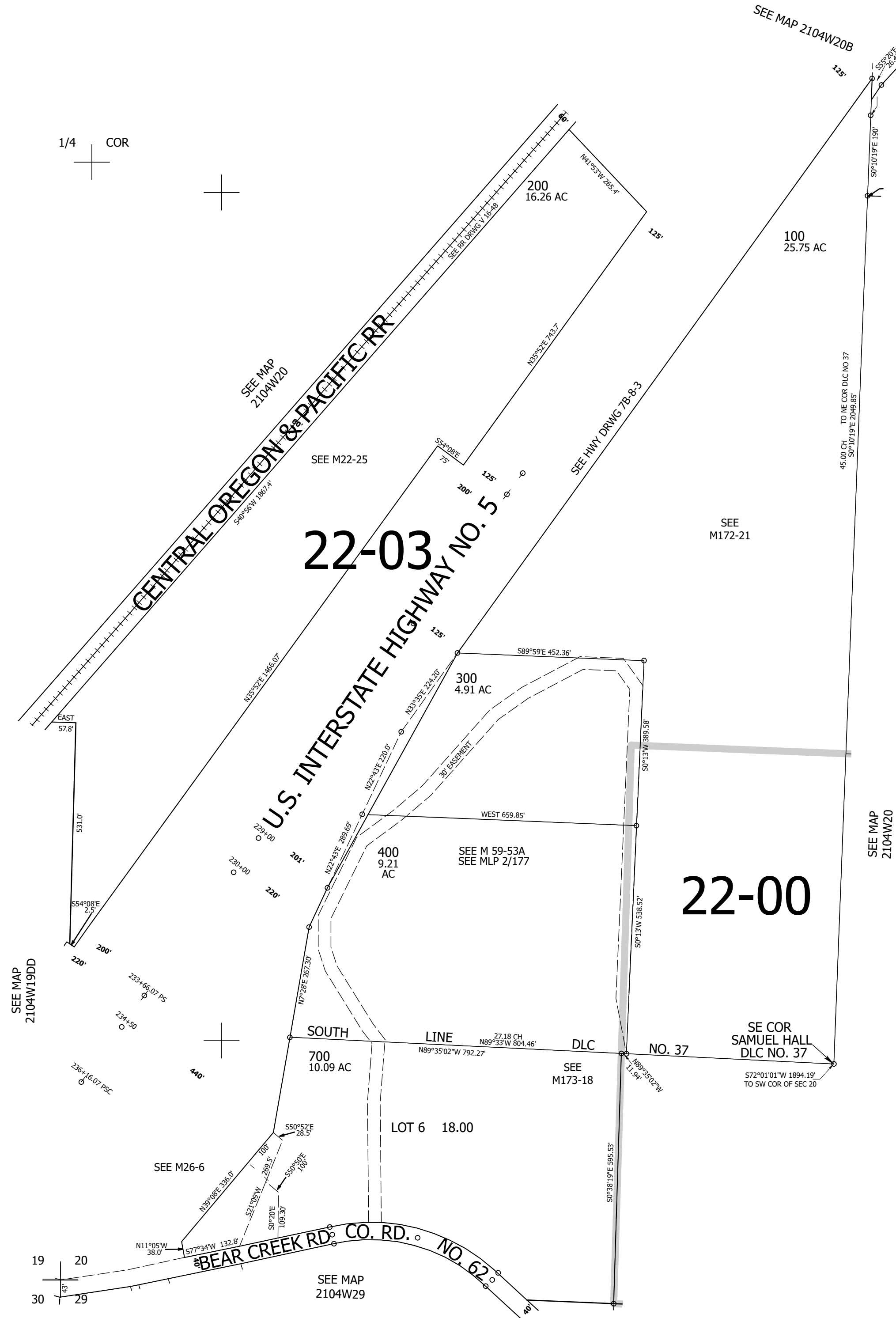
Upper Left:  
123°12'43"W 43°43'48"N  
4204600E 763639N ft

SW1/4 SEC.20 T.21S. R.04W. W.M.  
DOUGLAS COUNTY  
1" = 200'

Date Exported 2025-08-05

210420C

CANCELLED NOS:



210420C

Lower Right:  
123°11'48"W 43°43'14"N  
4208526E 760039N ft