

THIS MAP WAS PREPARED FOR ASSESSMENT PURPOSE ONLY.

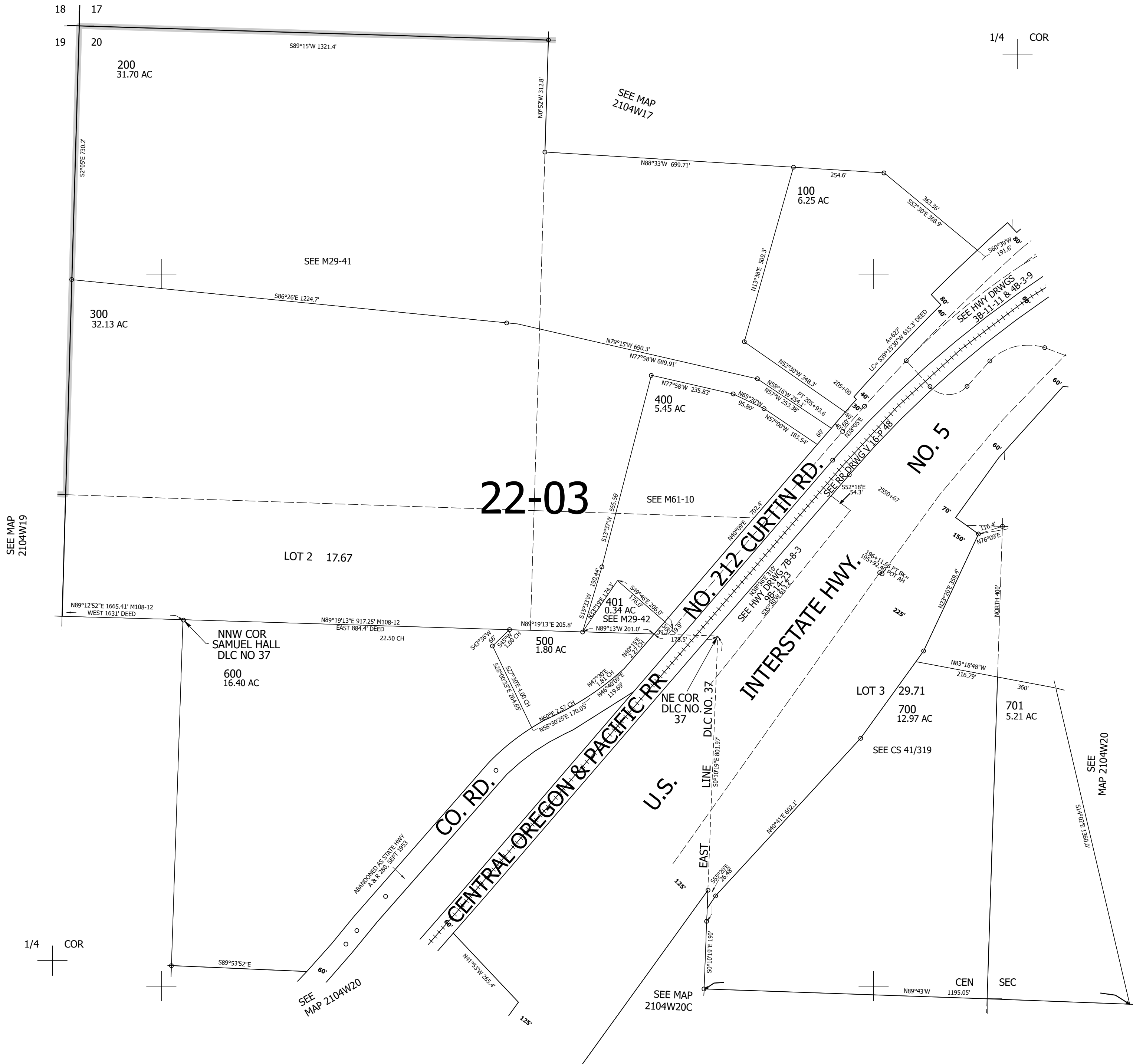
Upper Left:
123°12'35"W 43°44'13"N
4205257E 766065N ft

NW1/4 SEC.20 T.21S. R.04W. W.M.
DOUGLAS COUNTY
1" = 200'

Date Exported 2025-08-05

210420B

CANCELLED NOS:



210420B

Lower Right:
123°11'40"W 43°43'38"N
4209183E 762465N ft