

THIS MAP WAS PREPARED FOR ASSESSMENT PURPOSE ONLY.

Upper Left:
123°12'52"W 43°43'31"N
4203882E 761876N ft

SE1/4 SE1/4 SEC.19 T.21S. R.04W. W.M.
DOUGLAS COUNTY

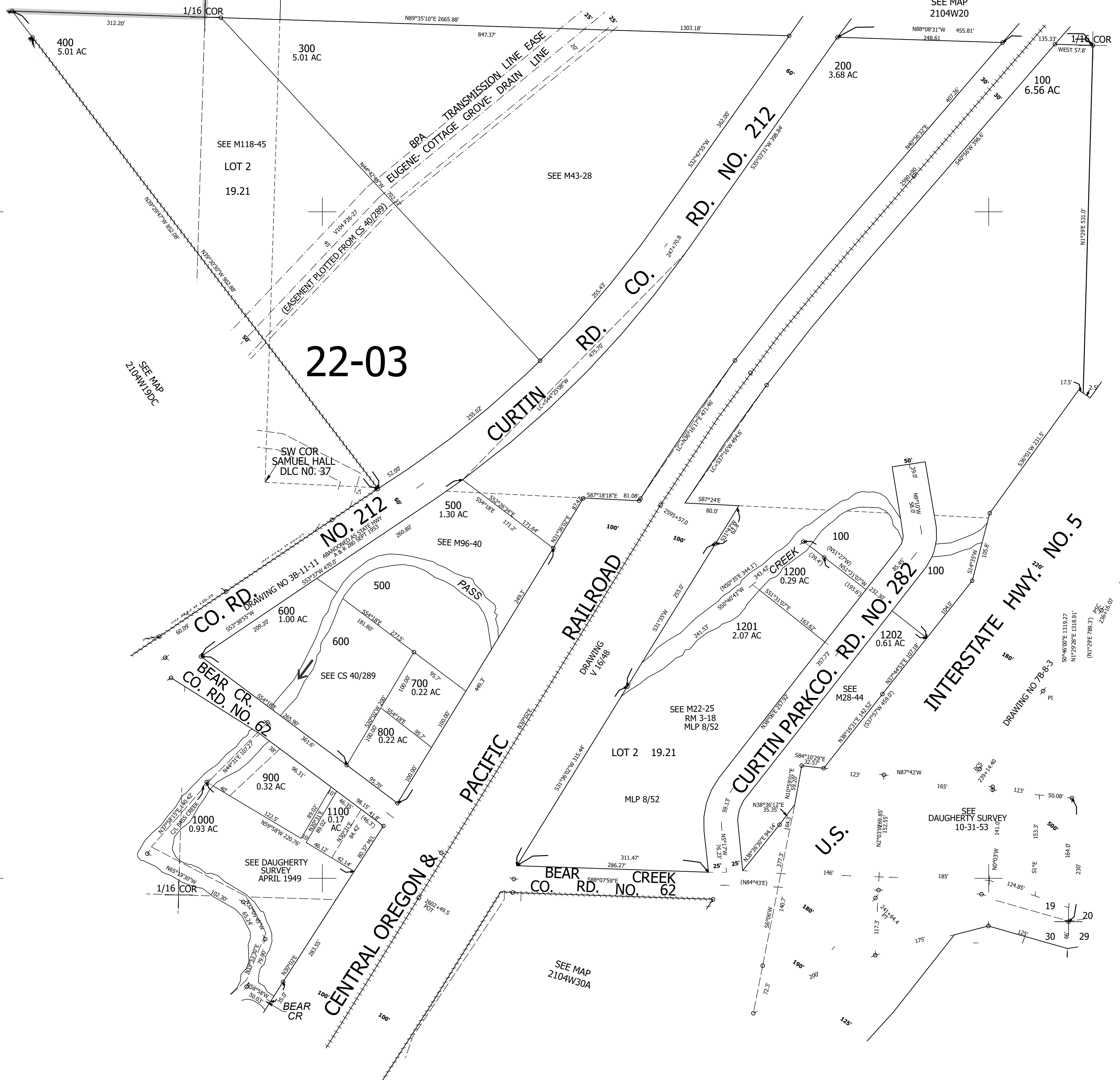
Date Exported 2025-08-05

210419DD

SEE MAP 2104W19
1" = 100'

SEE MAP 2104W20

CANCELLED NOS:



22-03

SEE M118-45
LOT 2
19.21

SEE M43-28

SEE MAP 2104W19DC

SEE MAP 2104W20C

BEAR CR. CO. RD. NO. 62

CENTRAL OREGON & PACIFIC

RAILROAD

CURTIN PARK CO. RD. NO. 282

INTERSTATE HWY. NO. 5

BEAR CR. CO. RD. NO. 62

U.S.

SEE DAUGHERTY SURVEY 10-31-53

SEE MAP 2104W30A

210419DD

Lower Right:
123°12'24"W 43°43'14"N
4205857E 760138N ft