

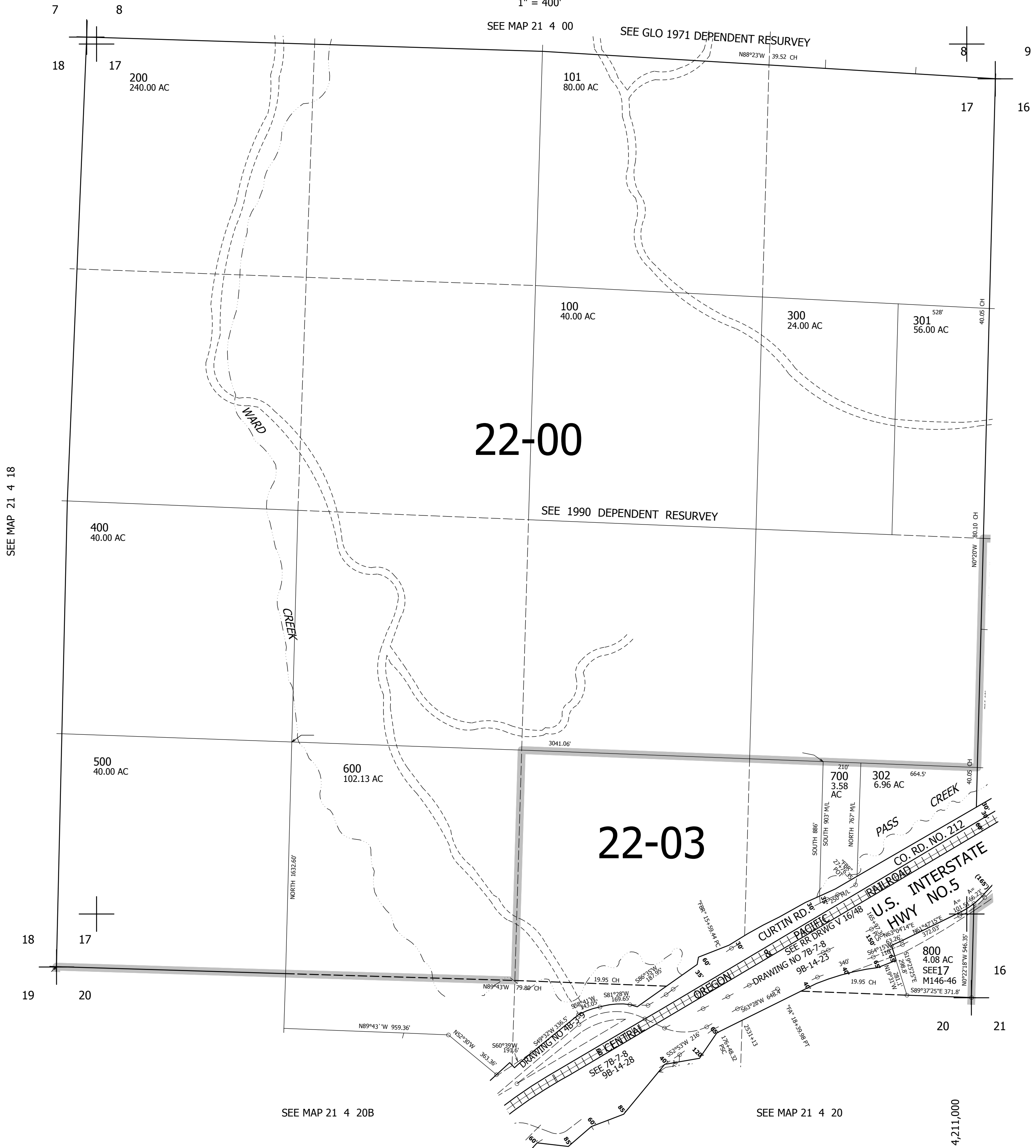
THIS MAP WAS PREPARED FOR ASSESSMENT PURPOSE ONLY.

SEC.17 T21S. R.4W. W.M.  
DOUGLAS COUNTY

1" = 400'

REVISED ON  
9-28-16

21 4 17



SEE MAP 21 4 18

SEE MAP 21 4 16

SEE MAP 21 4 20B

SEE MAP 21 4 20

766,000

4,211,000

21 4 17