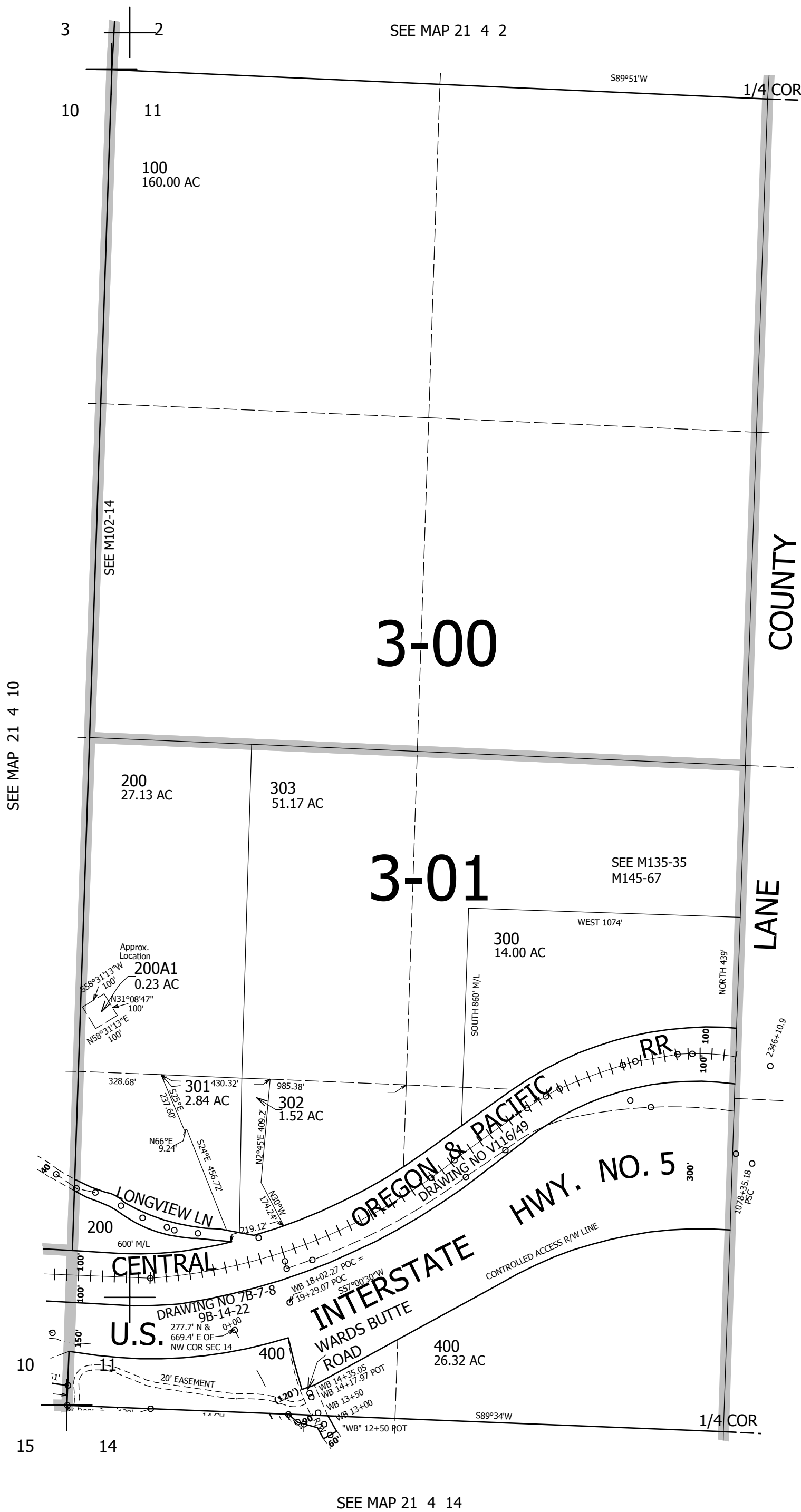


THIS MAP WAS PREPARED FOR ASSESSMENT PURPOSE ONLY.

SEC.11 T21S. R.4W. W.M.
DOUGLAS COUNTY
1" = 400'

REVISED ON
4-18-17

21 4 11



SEE MAP 21 4 10

SEE MAP 21 4 2

SEE MAP 21 4 14

4,227,000

CANCELLED NO'S

771,000

21 4 11