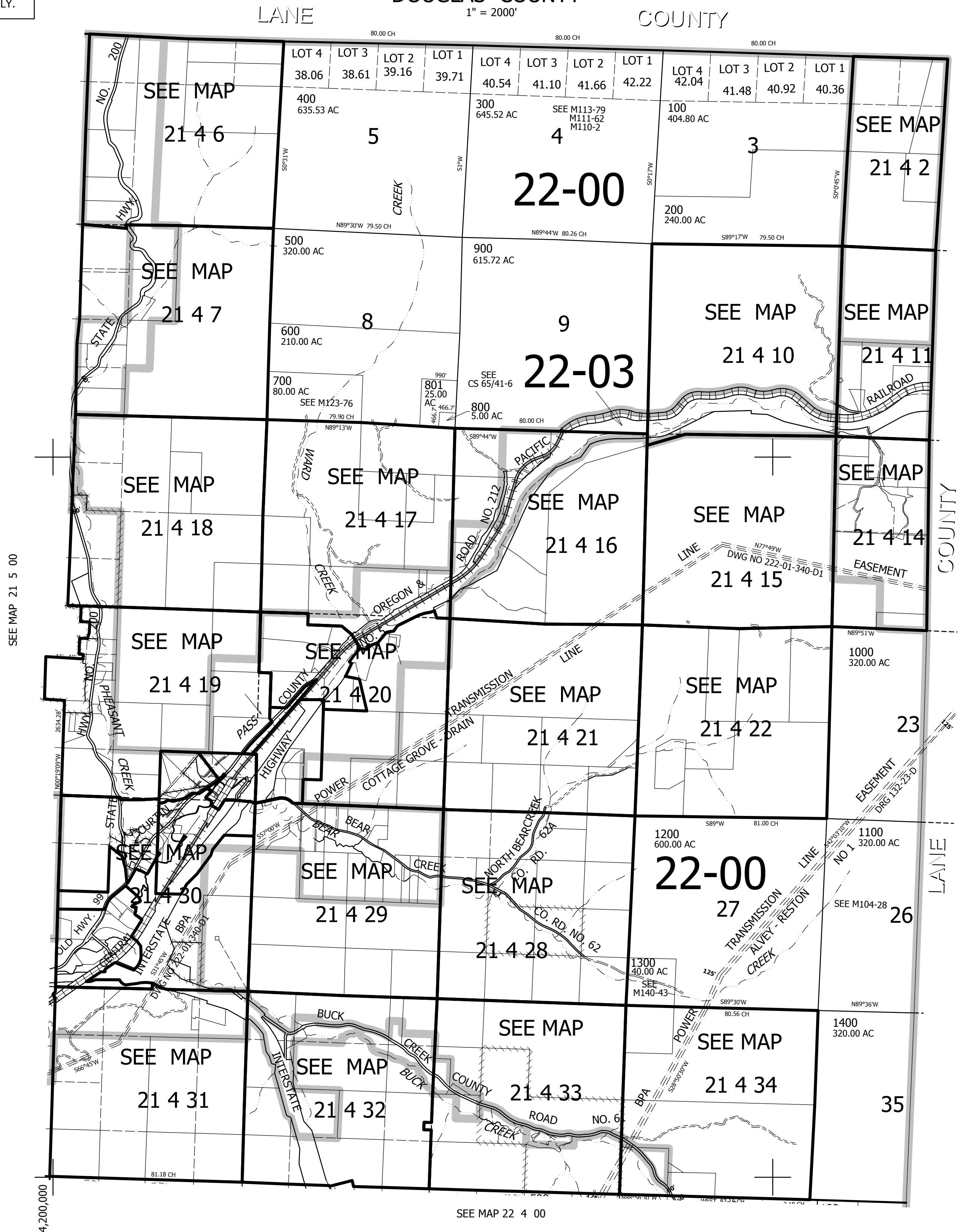


THIS MAP WAS PREPARED FOR ASSESSMENT PURPOSE ONLY.

T21S. R.4W. W.M.  
DOUGLAS COUNTY  
1" = 2000'

REVISED ON  
4-12-16

21 4 00  
& INDEX



770,000

SEE MAP 21 5 00

4,200,000

SEE MAP 22 4 00

21 4 00  
& INDEX