

THIS MAP WAS PREPARED FOR ASSESSMENT PURPOSE ONLY.

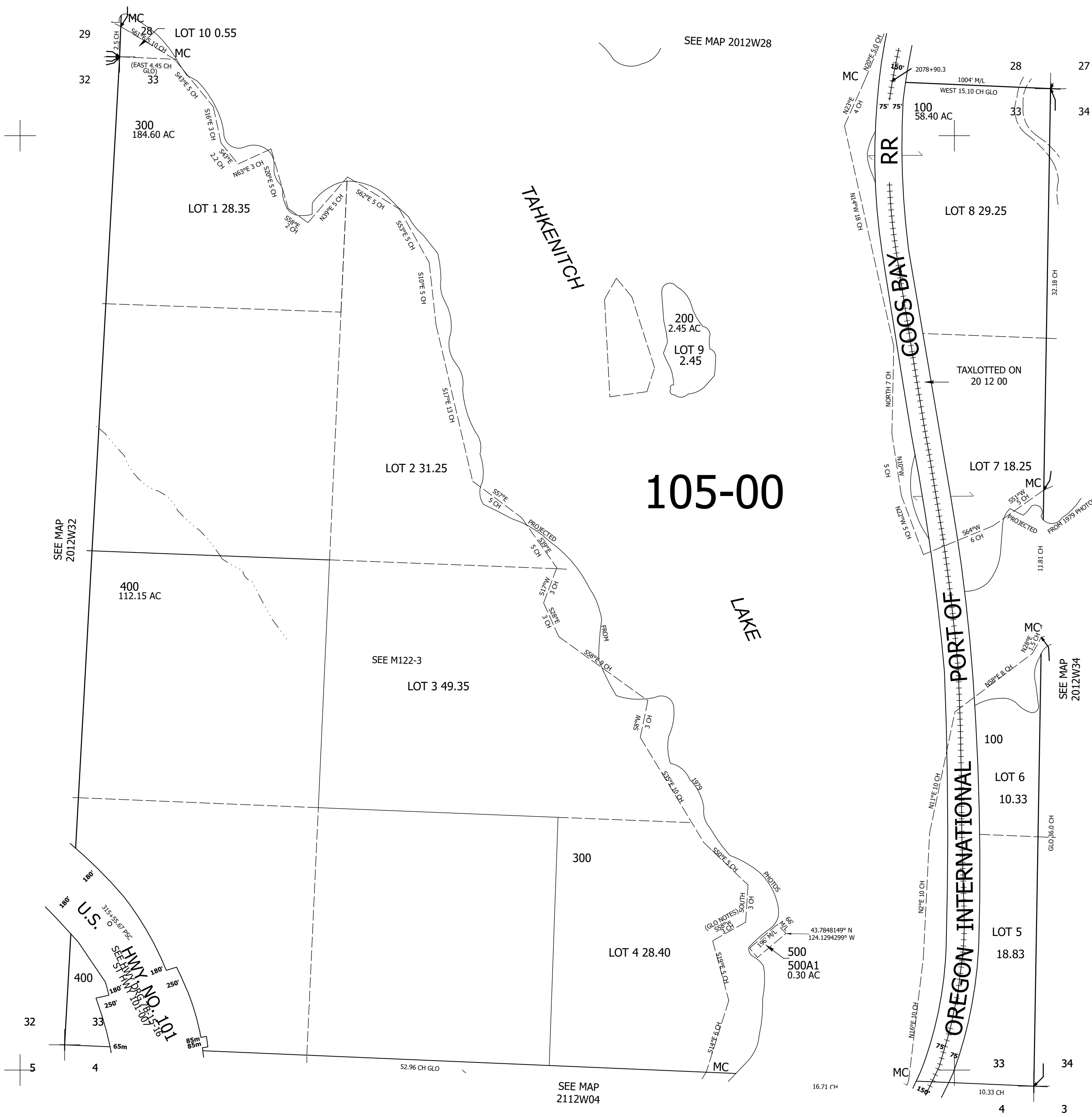
Upper Left:
124°8'58"W 43°47'58"N
3958033E 798250N ft

SEC.33 T.20S. R.12W. W.M.
DOUGLAS COUNTY
1" = 400'

Date Exported 2024-01-22

201233

CANCELLED NOS:
100M1 300M1



201233

Lower Right:
124°7'7"W 43°46'52"N
3965883E 791295N ft