

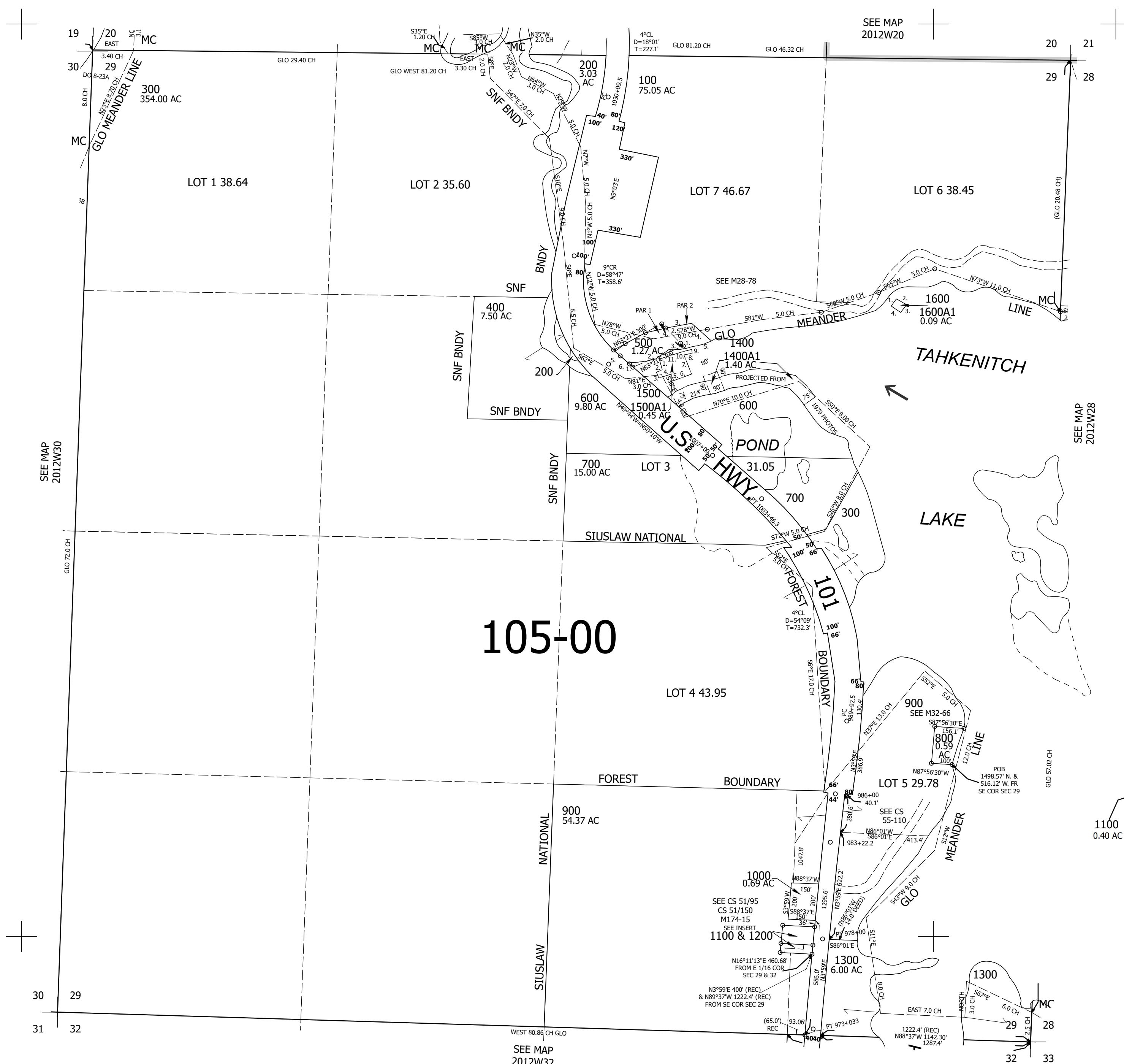
TAXLOT 500

- PARCEL 1
1. S50°10'E 10' M/L
  2. N63°21'E 300'
  3. N49°16'30"W 10'
  4. N49°16'30"W 164.76'
  5. S47°20'E 55'
  6. SOUTHEASTERLY TO POB

- PARCEL 2
1. N49°16'30"W 10'
  2. N49°16'30"W 137.10'
  3. N78°01'E 125.70'
  4. S49°16'30"E
  5. SOUTHWESTERLY TO POB

- TAXLOT 1500
- POB BEARS N82°47'50"E 171' M/L  
FR SW COR INST 2004-30966
1. S16°20'40"E 61'
  2. S68°34'59"W 35' M/L
  3. S23°14'35"E 35' M/L
  4. N72°20'51"E 69' M/L
  5. S25°00'22"E 38' M/L
  6. N69°45'17"E 104' M/L
  7. N22°04'46"W 113' M/L
  8. N78°24'00"E 47' M/L
  9. N10°23'18"W 21' M/L
  10. S75°30'37"W 51' M/L
  11. S70°57'57"W 135' M/L

- TAXLOT 1600
1. P.O.B  
43.80821 LAT, -124.14725 LONG  
NE 60'
  2. 43.80832 LAT, -124.14715 LONG  
SE 65'
  3. 43.80824 LAT, -124.14693 LONG  
SW 60'
  4. 43.80812 LAT, -124.14705 LONG  
NW 65' TO P.O.B.



105-00

SEE MAP 2012W28

SEE MAP 2012W30

INSERT  
1" = 200'

