

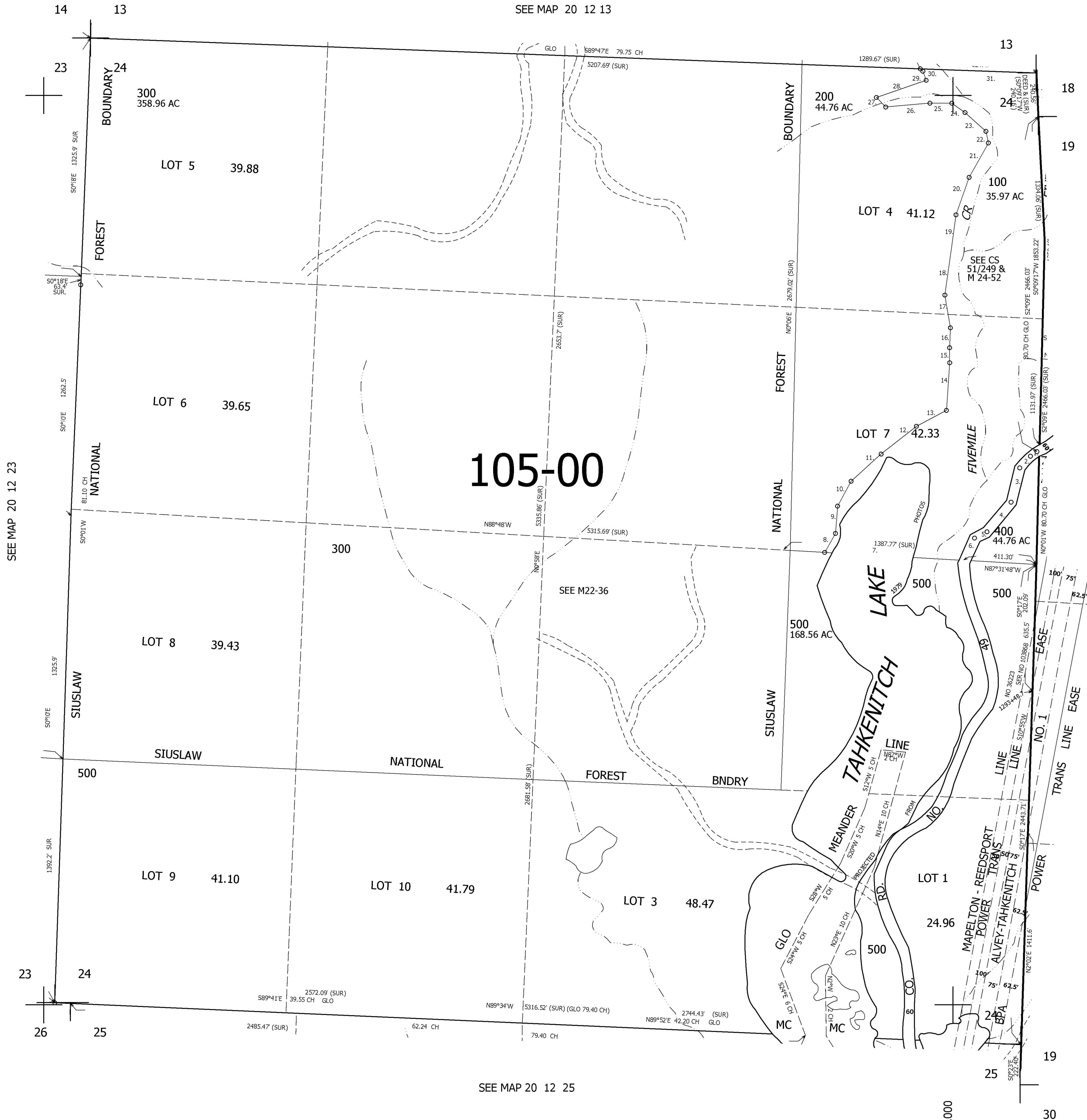
THIS MAP WAS PREPARED FOR ASSESSMENT PURPOSE ONLY.

SEC.24 T20S. R.12W. W.M. DOUGLAS COUNTY

1" = 400'

REVISED ON 10-16-00

20 12 24



105-00

CANCELLED NO'S 100M1 200M1 300M1 400M1

PARCEL 100

1. S84°49'30"W 41.07'
2. S40°38'W 83.25'
3. S18°13'W 199.51'
4. S39°W 197.39'
5. S60°45'30"W 83.10'
6. S25°21'30"W 144.77'
7. N87°31'48"W 760.04'
8. N21°50'30"E 130.28'
9. N7°09'E 146.19'
10. N29°27'E 159.85'
11. N46°50'30"E 218.30'
12. N52°08'E 256.02'
13. N32°52'E 108.92'
14. N21°45'E 282.50'
15. N15°06'30"W 81.70'
16. N1°49'30"W 99.80'
17. N7°12'W 186.01'
18. N8°04'E 278.59'
19. N71°11'30"E 166.52'
20. N18°58'E 223.18'
21. N30°28'30"E 212.81'
22. N15°10'W 54.98'
23. N45°34'W 162.41'
24. N48°45'W 87.95'
25. S89°51'30"W 124.26'
26. S85°10'30"W 245.21'
27. N45°18'30"W 68.08'
28. N70°04'E 293.66'
29. N10°03'W 60.94'
30. N29°29'W 7.13'
31. S87°33'E 624.47'

SEE MAP 20 12 23

SEE MAP 20 12 25

SEE MAP 20 11 19

802,000

3,980,000

20 12 24