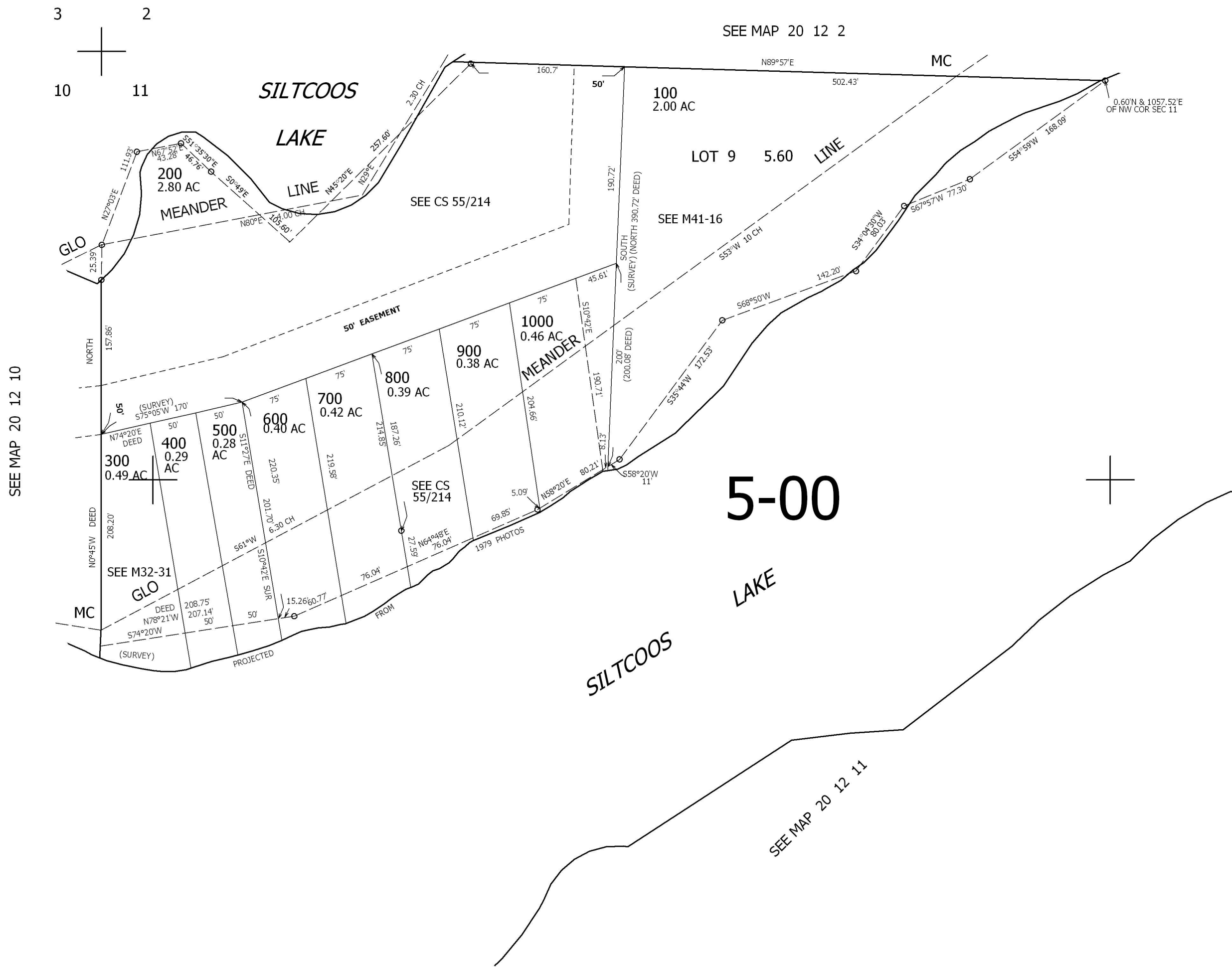


THIS MAP WAS PREPARED FOR ASSESSMENT PURPOSE ONLY.

NW1/4 N1W1/4 SEC.11 T20S. R.12W. W.M.
DOUGLAS COUNTY
1" = 100'

REVISED ON
8-6-10

20 12 11BB



1/16 COR

CANCELLED NO'S
1100

818,000

1/16 COR

1/16 COR

3,971,500

20 12 11BB