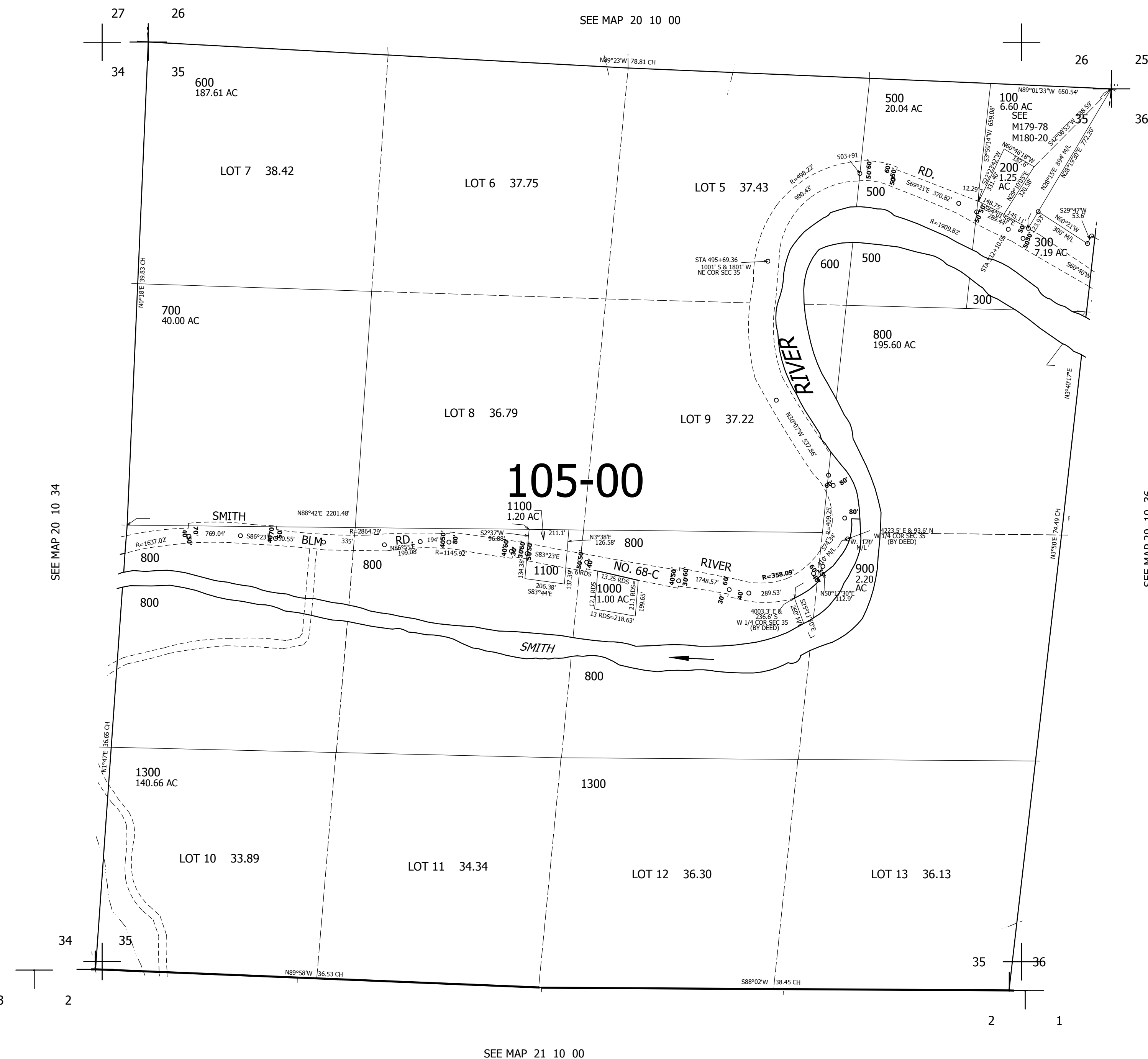


THIS MAP WAS PREPARED FOR ASSESSMENT PURPOSE ONLY.

SEC.35 T.20S. R.10W. W.M.  
DOUGLAS COUNTY  
1" = 400'

REVISED ON  
4-19-96

20 10 35



CANCELLED NO'S  
1200 400 700M1

789,000

4,037,000

20 10 35