

THIS MAP WAS PREPARED FOR ASSESSMENT PURPOSE ONLY.

Upper Left:  
123°56'1"W 43°47'55"N  
4014976E 795552N ft

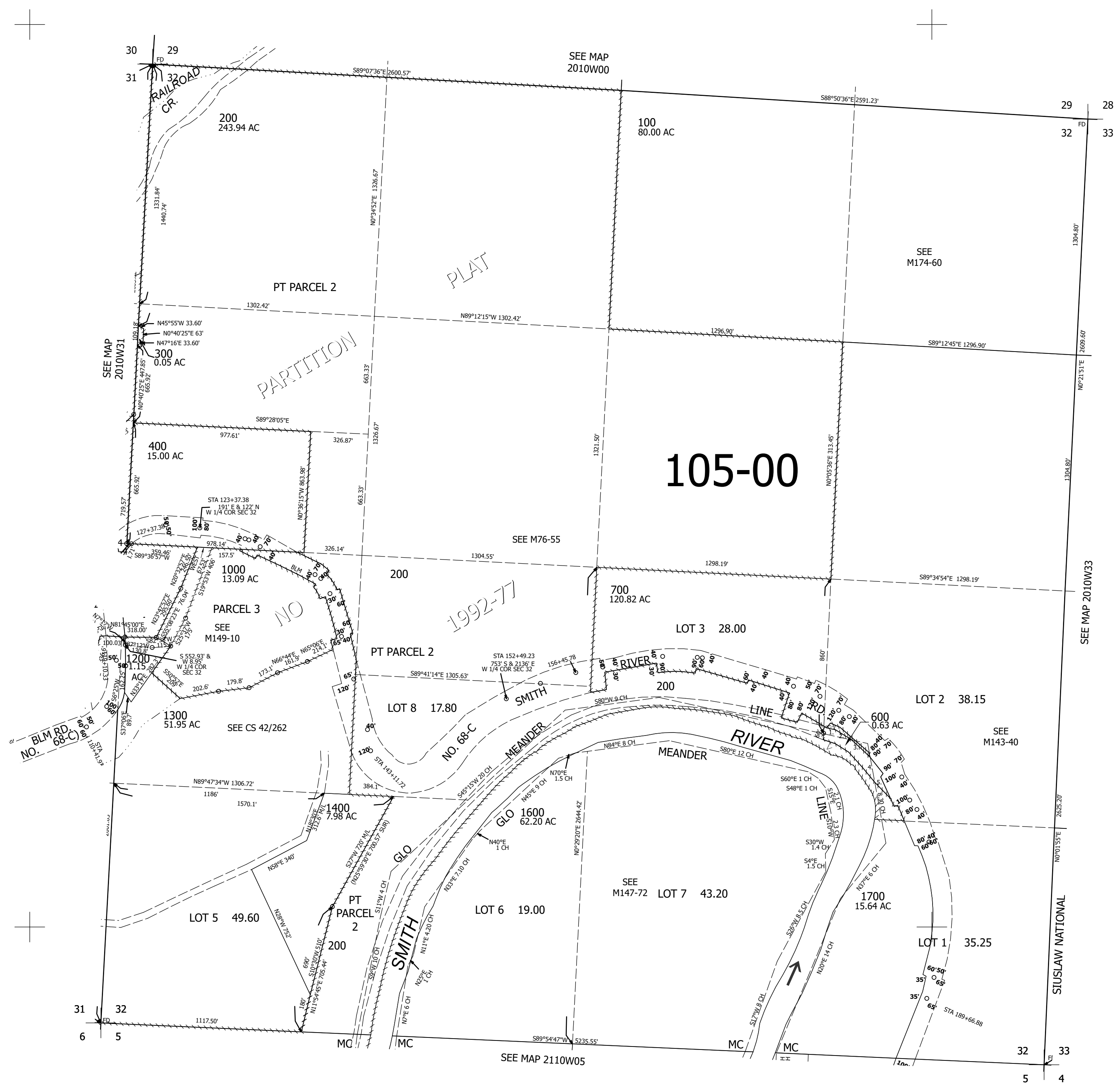
SEC.32 T.20S. R.10W. W.M.  
DOUGLAS COUNTY  
1" = 400'

Date Exported 2024-06-17

201032

- PARCEL 600
1. 20° CURVE LEFT R=90'
  2. 553°E 73.1'
  3. 8° CURVE RIGHT R=80'
  4. 545°E 148'
  5. 16° CURVE RIGHT R=62.5'

CANCELLED NOS:  
500 800 900  
1500 200M1 200M2  
1000M1 1001M1 1100  
1101 1001



SEE MAP 2010W33

SEE MAP 2110W05

201032

Lower Right:  
123°54'10"W 43°46'49"N  
4022825E 788596N ft