

THIS MAP WAS PREPARED FOR ASSESSMENT PURPOSE ONLY.

SEC.18 T.20S. R.10W. W.M. DOUGLAS COUNTY

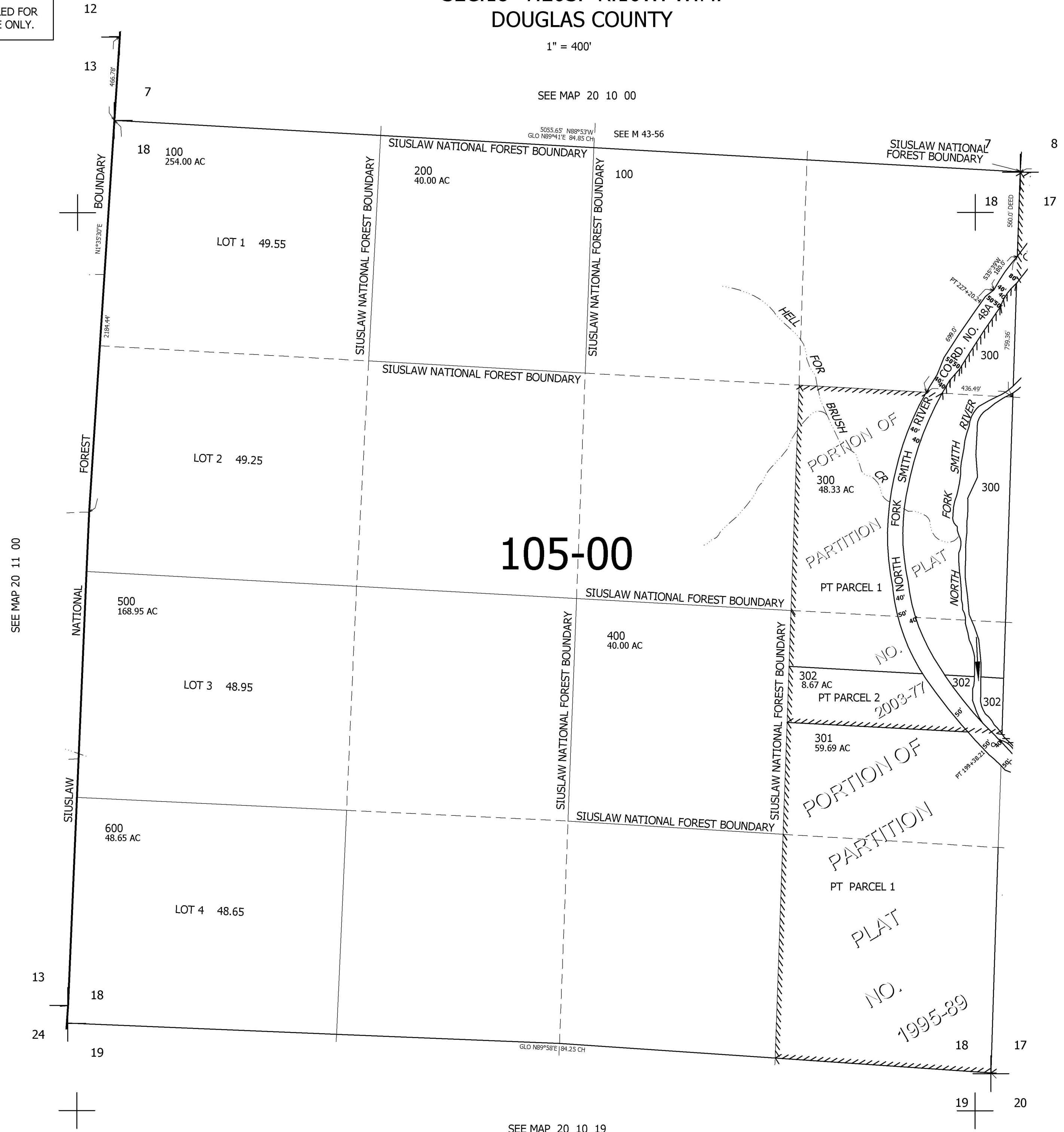
REVISED ON 12-4-03

20 10 18

1" = 400'

SEE MAP 20 10 00

5055.65' N88°53'W / GLO N89°41'E 84.85 CH SEE M 43-56



CANCELLED NO'S

SEE MAP 20 11 00

SEE MAP 20 10 17

105-00

SEE MAP 20 10 19

805,000

4,017,000

20 10 18