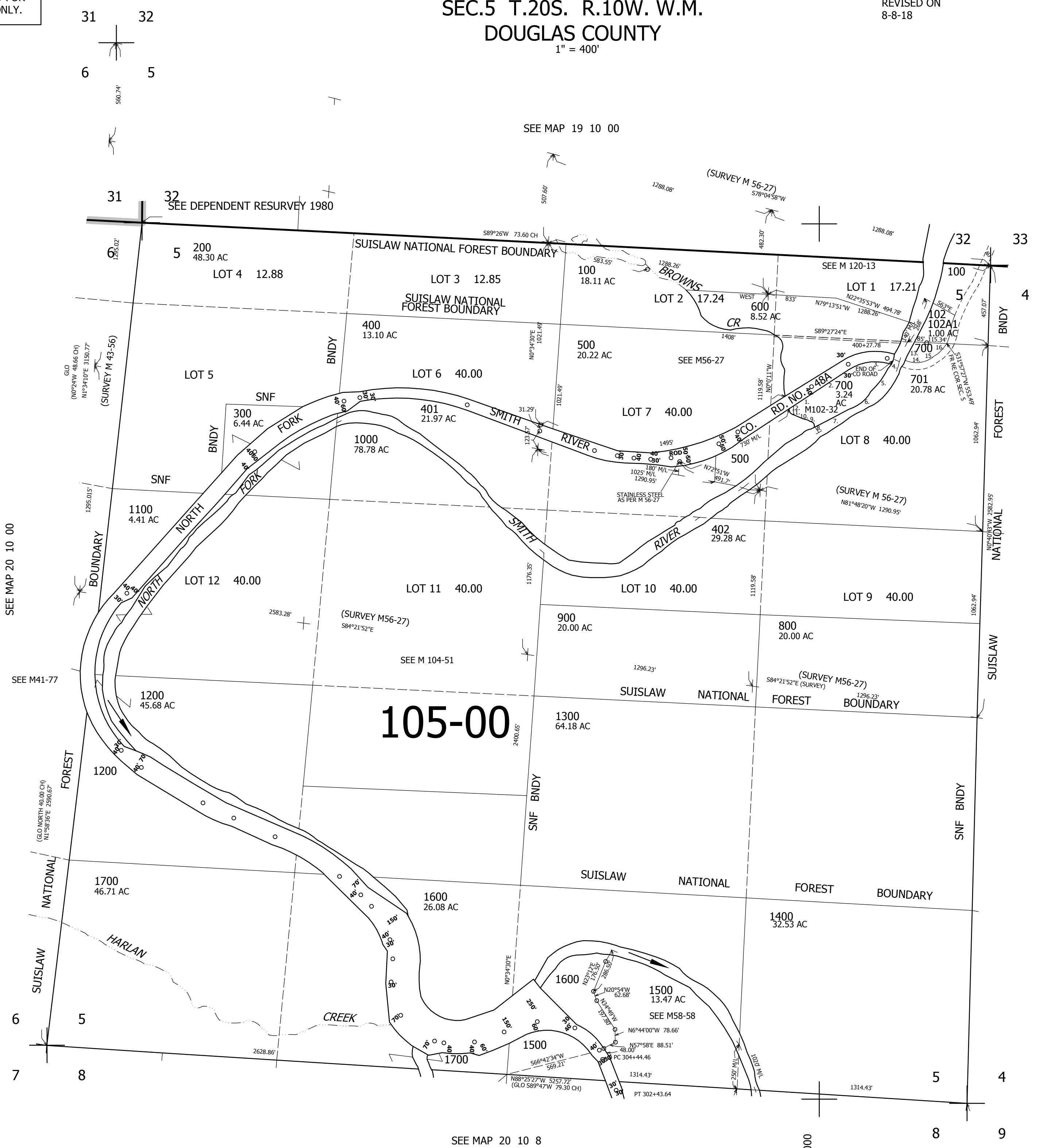


THIS MAP WAS PREPARED FOR ASSESSMENT PURPOSE ONLY.

SEC.5 T.20S. R.10W. W.M. DOUGLAS COUNTY 1" = 400'

REVISED ON 8-8-18

20 10 5



CANCELLED NO'S 101 100M1 1401

PARCEL 700

1. N50°38'E 100.49'
2. N56°17'E 269.80'
3. A=134.46' R=174.63' LC=N78°20'30"E 131.16'
4. S79°36'E 90.00'
5. S31°30'W 215.00'
6. S53°30'W 180.00'
7. S56°00'W 290.00'
8. N30°35'W 97.8'
9. N19°00'E 60.00'
10. N17°00'E 50.00'
11. N46°00'W 38.00'
12. N56°17'E 25.00'
13. S22°15'W 103.70'
14. S79°36'E 100.00'
15. A=147.30' R109.75' LC=N61°57'E 136.49'
16. N23°30'E 52.15'

SEE MAP 20 10 00

815,000

20 10 5

SEE MAP 20 10 8

4,022,000