

THIS MAP WAS PREPARED FOR ASSESSMENT PURPOSE ONLY.

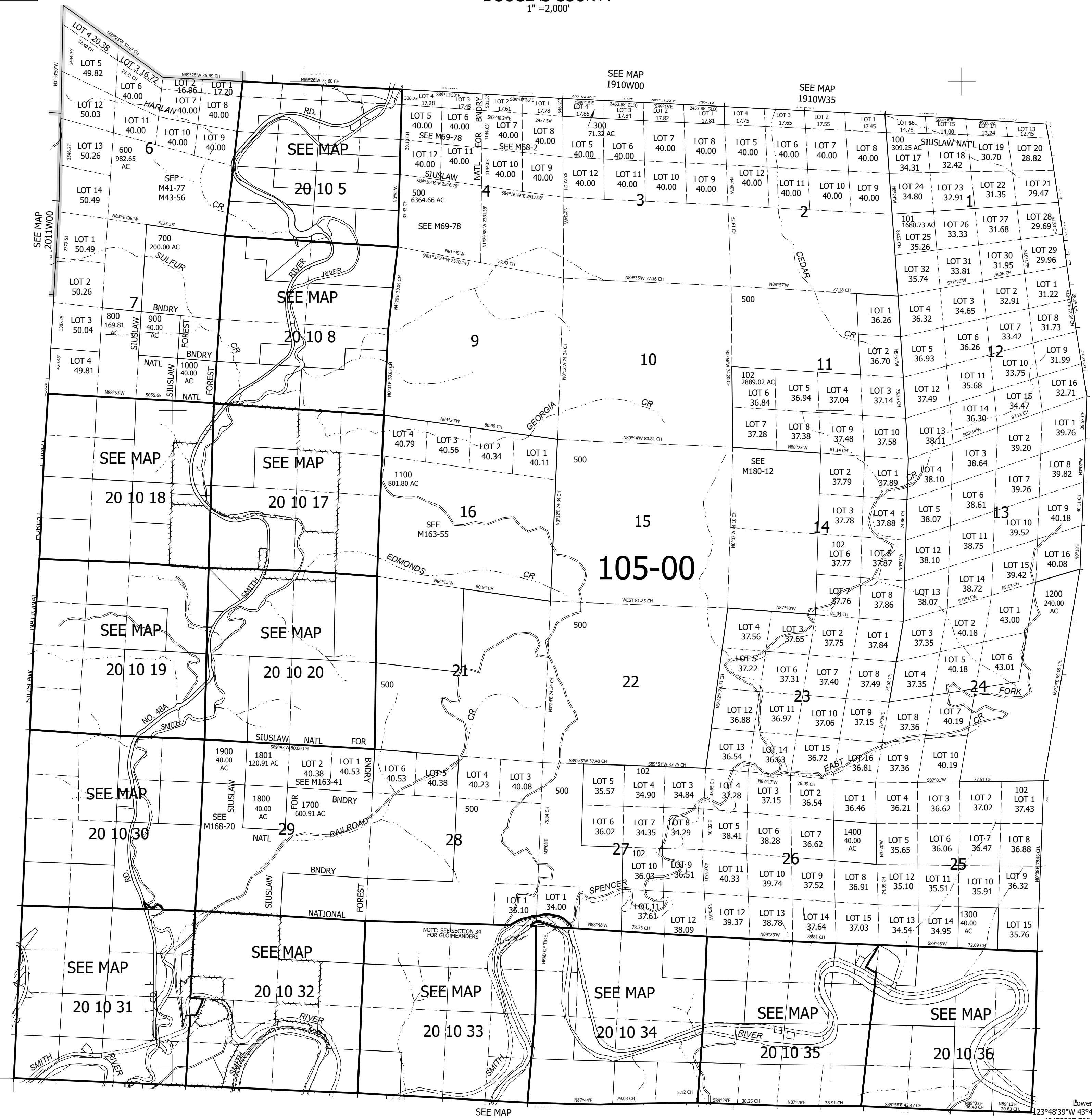
Upper Left:  
123°57'54"W 43°52'22"N  
4007843E 822937N ft

# T.20S. R.10W. W.M. DOUGLAS COUNTY

1" = 2,000'

Date Exported 2024-03-26

CANCELLED NOS:  
200 200M1 400  
400M1 1600 1600M1  
500M3 500M4 500M2  
500M1 1200M1 1300M1  
1400M1 1800M1 1801M1  
1801M2 1500 501



SEE MAP 2009W00

Lower Right:  
123°48'39"W 43°46'55"N  
4047090E 788161N ft

SEE MAP 2110W00