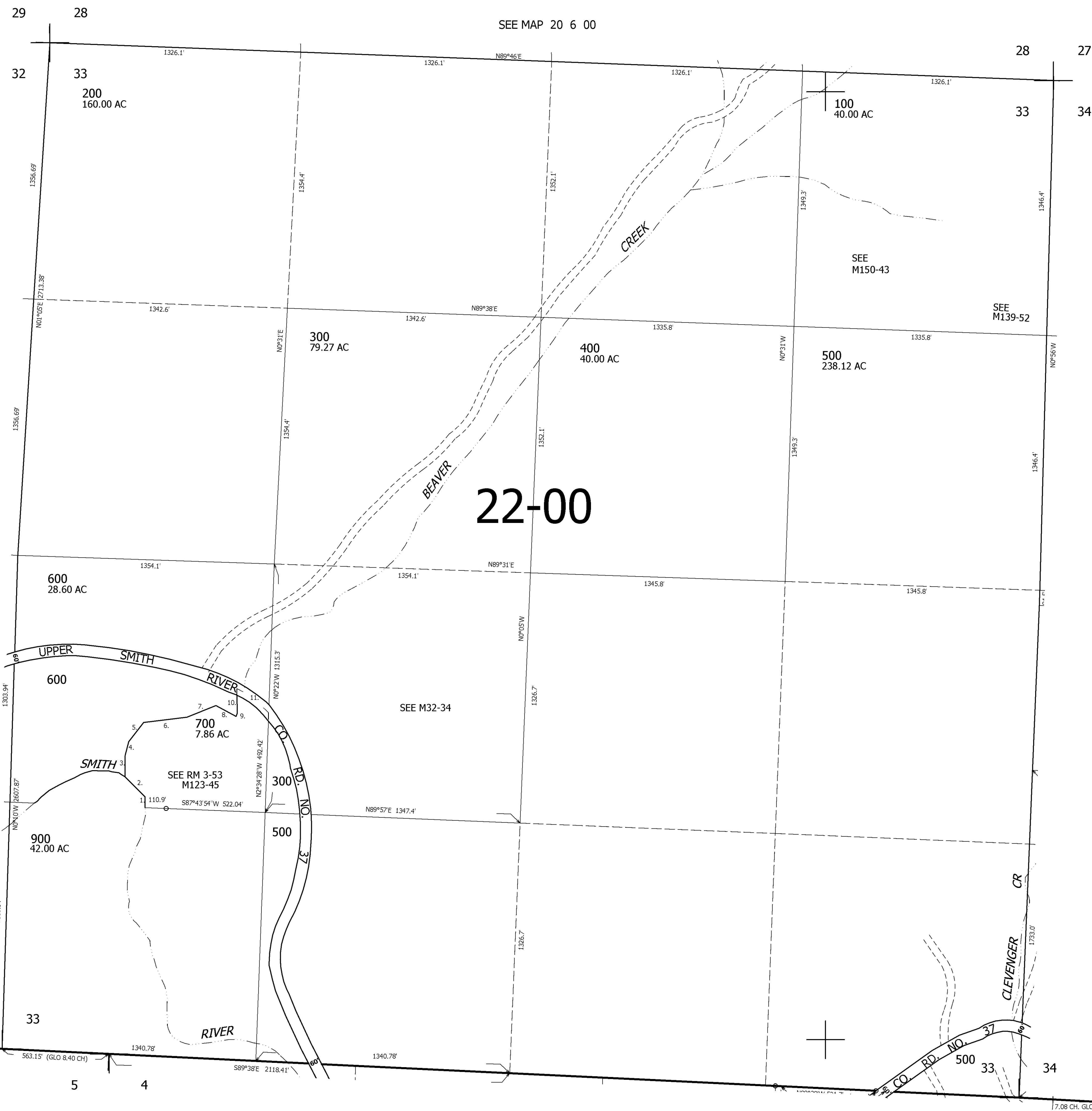


THIS MAP WAS PREPARED FOR ASSESSMENT PURPOSE ONLY.

SEC.33 T.20S. R.6W. W.M.
DOUGLAS COUNTY
1" = 400'

REVISED ON
5-21-96

20 6 33



CANCELLED NO'S
800 601 900M1

- PARCEL 700
1. N1°38'04"W 57.89'
 2. N45°14'02"W 146.78'
 3. N0°23'36"W 113.81'
 4. N14°55'39"W 73.68'
 5. N38°27'12"E 128.59'
 6. N83°59'25"E 231.6'
 7. N68°57'47"E 163.15'
 8. S62°10'13"E 120.41'
 9. N22°23'10"E 20.64'
 10. N2°34'10"W 133.27'
 11. S56°36'35"E 197.64'

784,000

20 6 33