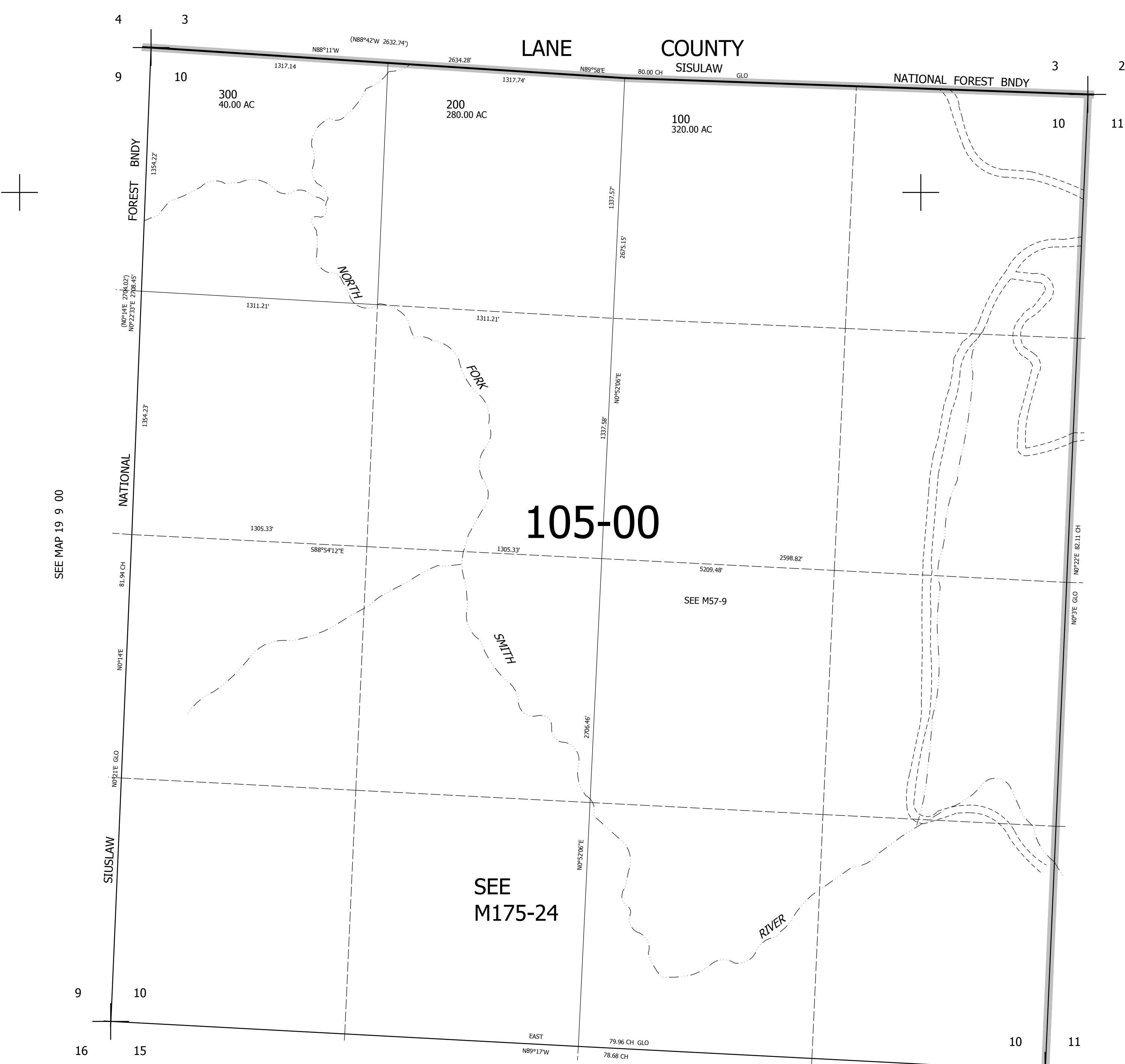


THIS MAP WAS PREPARED FOR
ASSESSMENT PURPOSE ONLY.

SEC. 10 T.19S. R.9W. W.M.
DOUGLAS COUNTY
1" = 400'

REVISED ON
4-15-96

19 9 10



CANCELLED NO'S
200M1

SEE MAP 19 9 00

SEE MAP 19 9 00

105-00

SEE
M175-24

SEE M57-9

841,000

SEE MAP 19 9 00

4,065,000

19 9 10