

THIS MAP WAS PREPARED FOR ASSESSMENT PURPOSE ONLY.

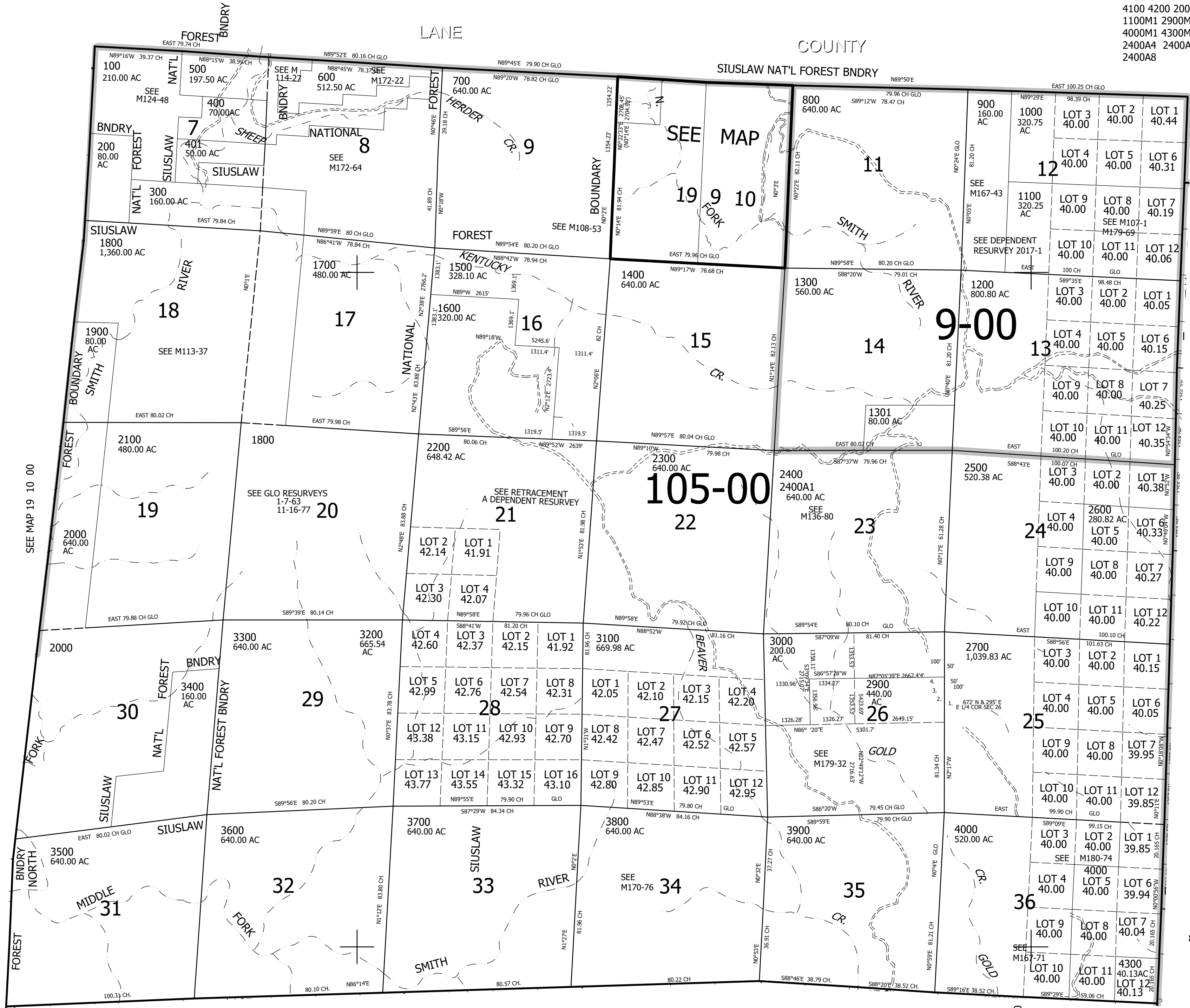
T19S. R.9W. W.M. DOUGLAS COUNTY

REVISED ON 1-24-17

19 9 00 & INDEX

1" = 2000'

CANCELLED
2400A3 2400A6 2800
4100 4200 200M1
1100M1 2900M1 3800M1
4000M1 4300M1 2400A2
2400A4 2400A5 2400A7
2400A8



SEE MAP 19 10 00

SEE MAP 19 8 00

SEE MAP 20 9 00

4,073,000

19 9 00 & INDEX

821,000