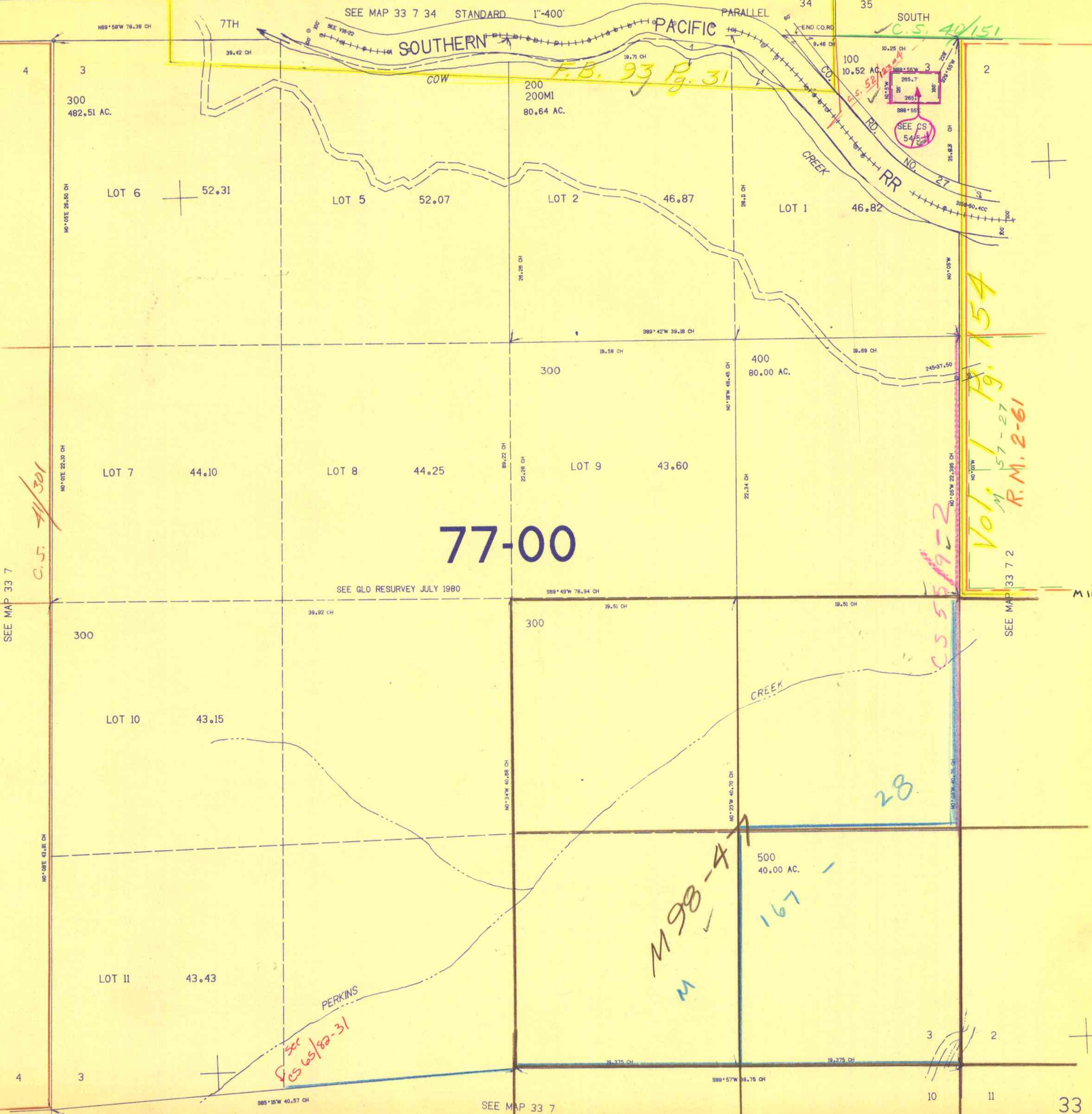


SECTION 3 T.33S. R.7W. W.M.  
DOUGLAS COUNTY

THIS MAP WAS PREPARED FOR  
ASSESSMENT PURPOSE ONLY.

33 34

*C.S. 41/301*



SEE MAP 33 7

*C.S. 41/301*

*C.S. 55/19-2*

*Vol. 1 Pg. 154*  
*M 57-27*  
*R.M. 2-61*

*M 98-4*  
*M*

*167*

*28*

*M 101-66*

SEE MAP 33 7 2

4

3

9

10

SEE MAP 33 7

3

2

10

11