

SECTION 10 T.33S. R.6W. W.M.  
DOUGLAS COUNTY

REVISED ON  
9-2-97

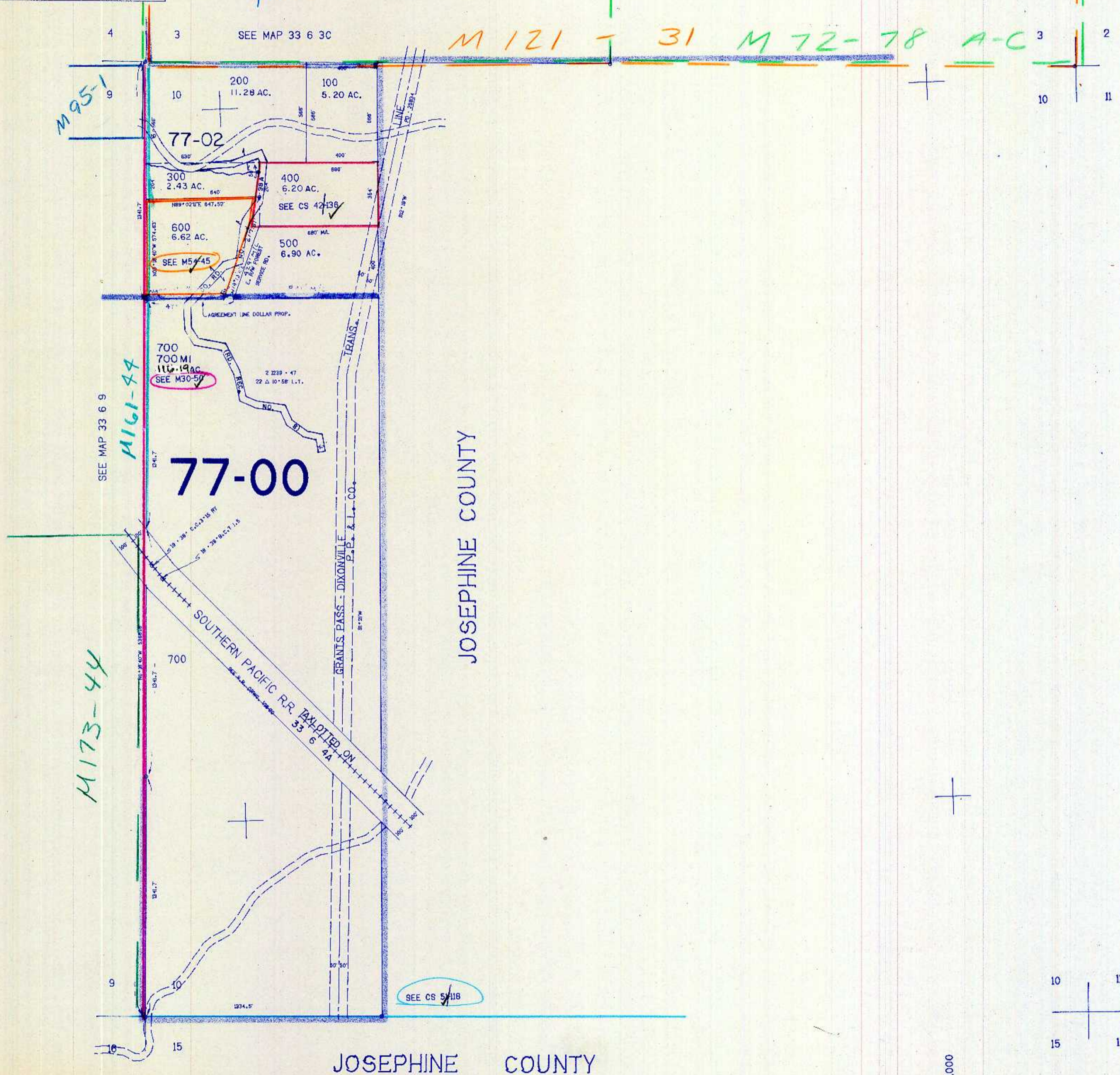
33 6 10

THIS MAP WAS PREPARED FOR  
ASSESSMENT PURPOSE ONLY.

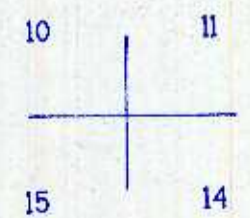
M170-55 A & B

1"=400'

M 121 - 31 M 72-78 A-C



395,000



33 6 10

1/98  
CB