

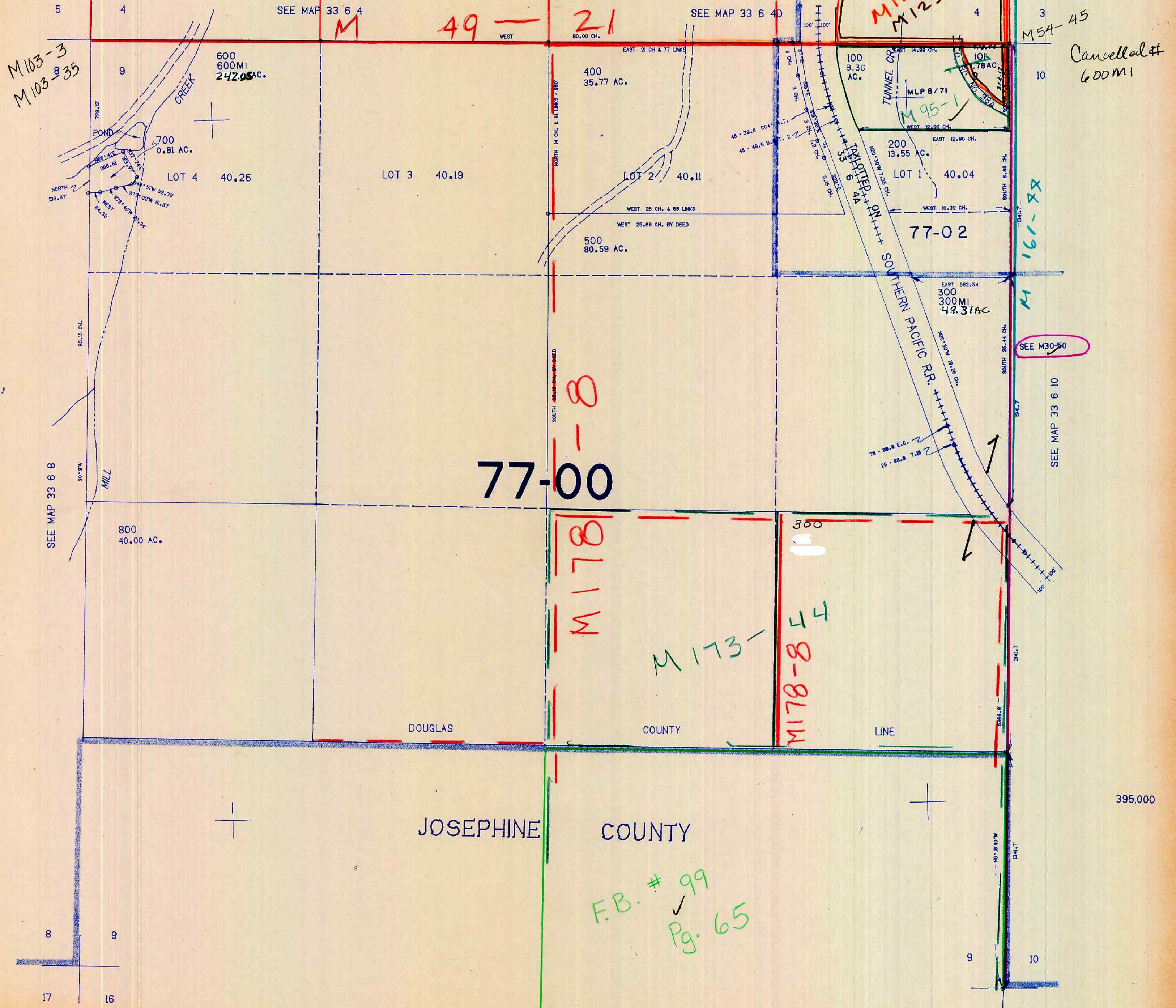
SECTION 9 T.33S. R.6W. W.M.
DOUGLAS COUNTY

REVISED ON
8-8-95

33 6 9

THIS MAP WAS PREPARED FOR
ASSESSMENT PURPOSE ONLY.

1"=400'



Cancelled #
600MI

SEE M30-50

SEE MAP 33 6 10

F.B. # 99
Pg. 65

33 6 9

9/95
SM