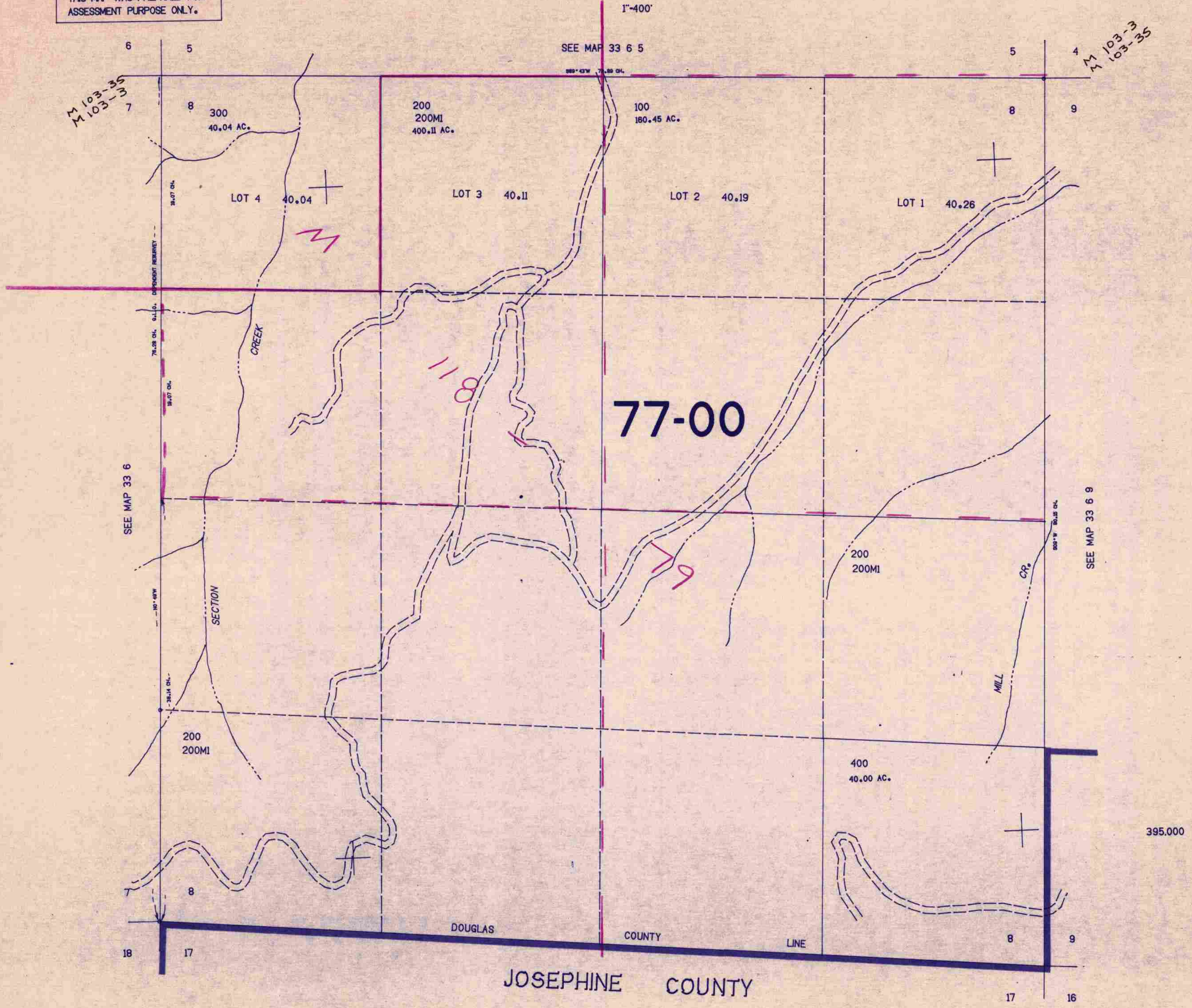


SECTION 8 T.33S. R.6W. W.M.
DOUGLAS COUNTY

33 6 8

THIS MAP WAS PREPARED FOR
ASSESSMENT PURPOSE ONLY.



M 103-35
M 103-37

M 103-33
M 103-35

77-00

118

79

395.000

DOUGLAS COUNTY
JOSEPHINE COUNTY

1214.000

33 6 8

11/83 ll