

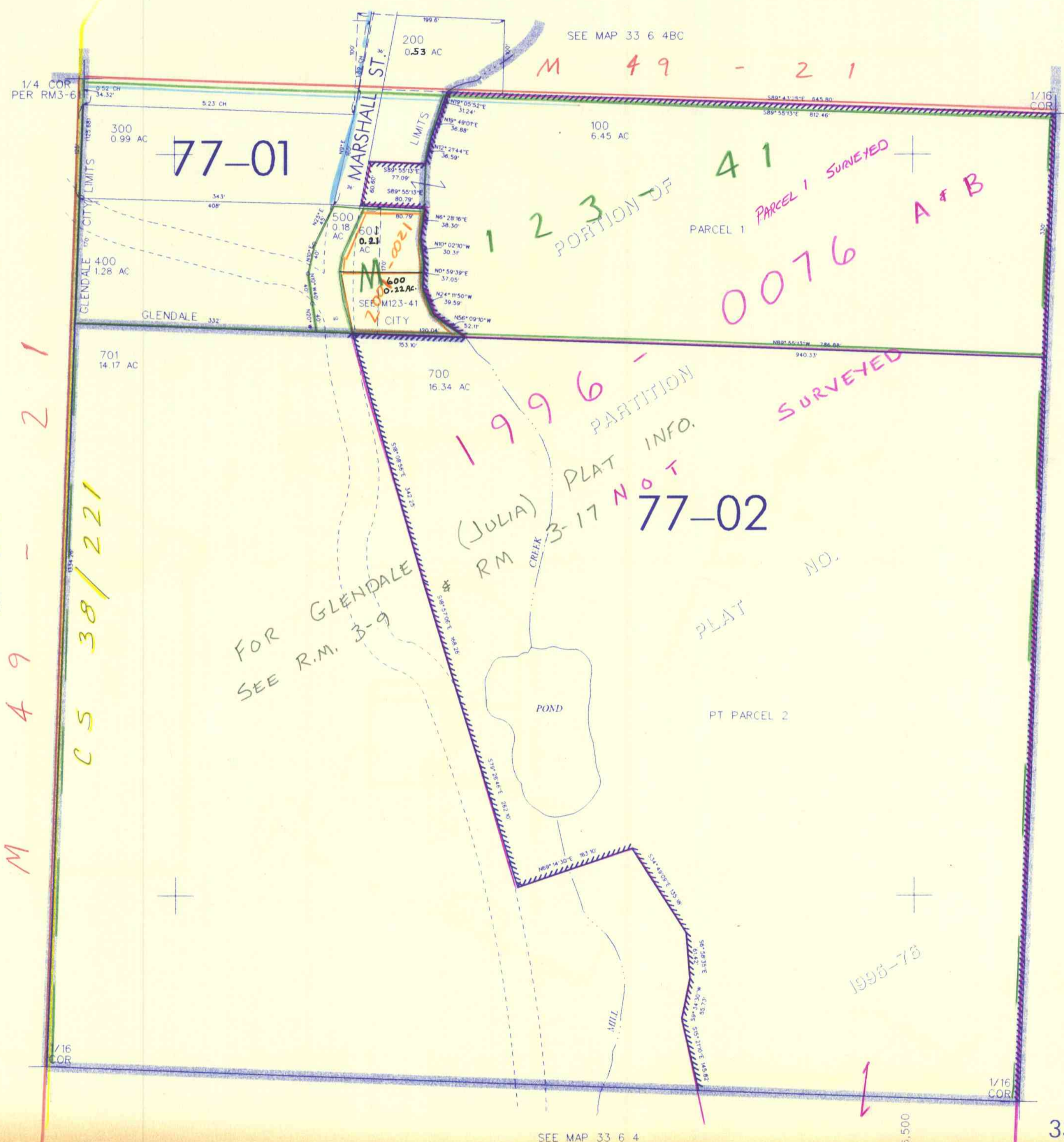
THIS MAP WAS PREPARED FOR ASSESSMENT PURPOSE ONLY

NW1/4 SW1/4 SEC. 4 T.33S. R.6 W W.M. DOUGLAS COUNTY

REVISED ON 7-31-00

33 6 4CB GLENDALE

1"=100'



SEE MAP 33 6 4BC  
M 49 - 21

77-01

1 2 3 PORTION OF 41  
PARCEL 1 SURVEYED  
0076 A & B

1996 -  
PARTITION  
PLAT INFO.  
3-17 NOT  
77-02  
SURVEYED

FOR GLENDALE  
SEE R.M. 3-9

M 49 - 21  
SEE MAP 33 6 5  
CS 38/221

CANCELLED NO'S  
101 201

SEE MAP 33 6 4

401,000

SEE MAP 33 6 4

4,136,500

33 6 4CB GLENDALE  
8/2000 JP v MW