

NE1/4 NW1/4 SEC. 4 T.33S. R.6W. W.M.
DOUGLAS COUNTY

33 6 4BA
GLENDALE

THIS MAP WAS PREPARED FOR
ASSESSMENT PURPOSE ONLY.

1"=100'

SEE MAP 32 6 33D

FOR GLENDALE PLAT INFO.
SEE R.M. 3-9#
R.M. 3-17

M 49-21
CO. RD. NO. 27 REUBEN MCCULLOUGH RD

COW CREEK

M 49-21

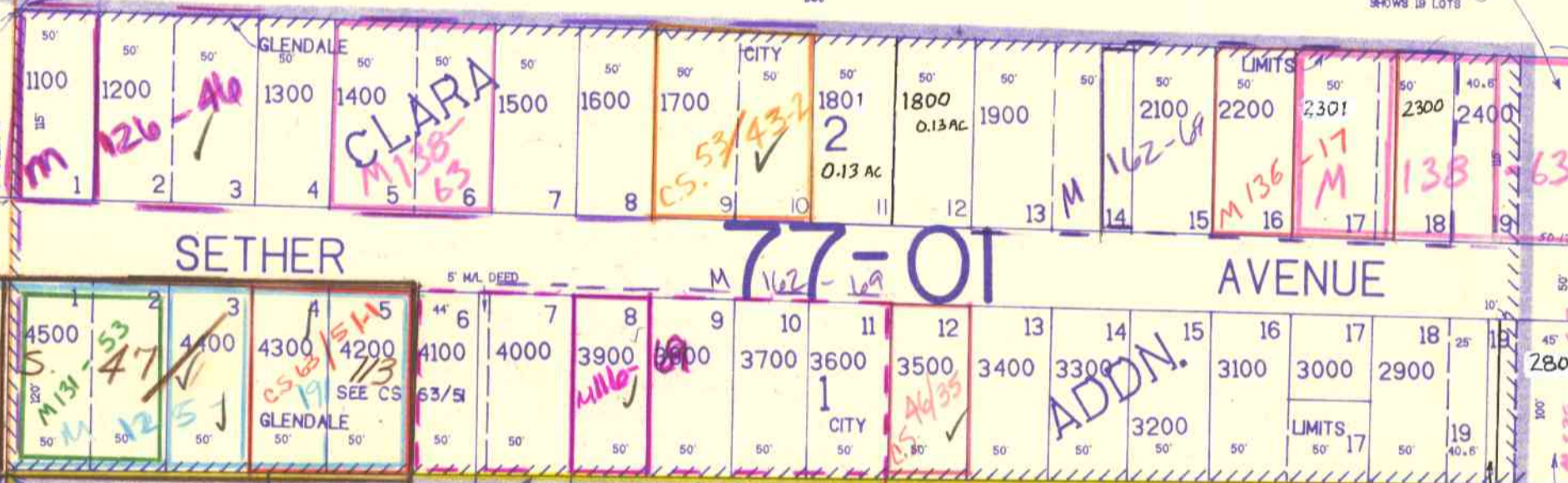
GLENDALE - PACIFIC HWY

M 44-36
M 46-14

CANCELLED NO'S.
2000
600

77-02

SEE MAP 33 6 4BB



CO. RD. NO. 12B
CO. RD. NO. 313
GLENDALE VALLEY RD

M 49-21

SEE MAP 33 6 4A

VOL 1 PG 215

77-02

M 98-39
M 85-55

GLENDALE

TOWN OF HAMILTON'S

LAFAYETTE ST RD.

ADD TO GLENDALE

NO. 175

EAST ST.

M 49-21

SEE MAP 33 6 4

403.500

33 6 4BA
GLENDALE

8/89
ELL

1216.000