

NE1/4 SEC. 4 T.33S. R.6W. W.M.
DOUGLAS COUNTY

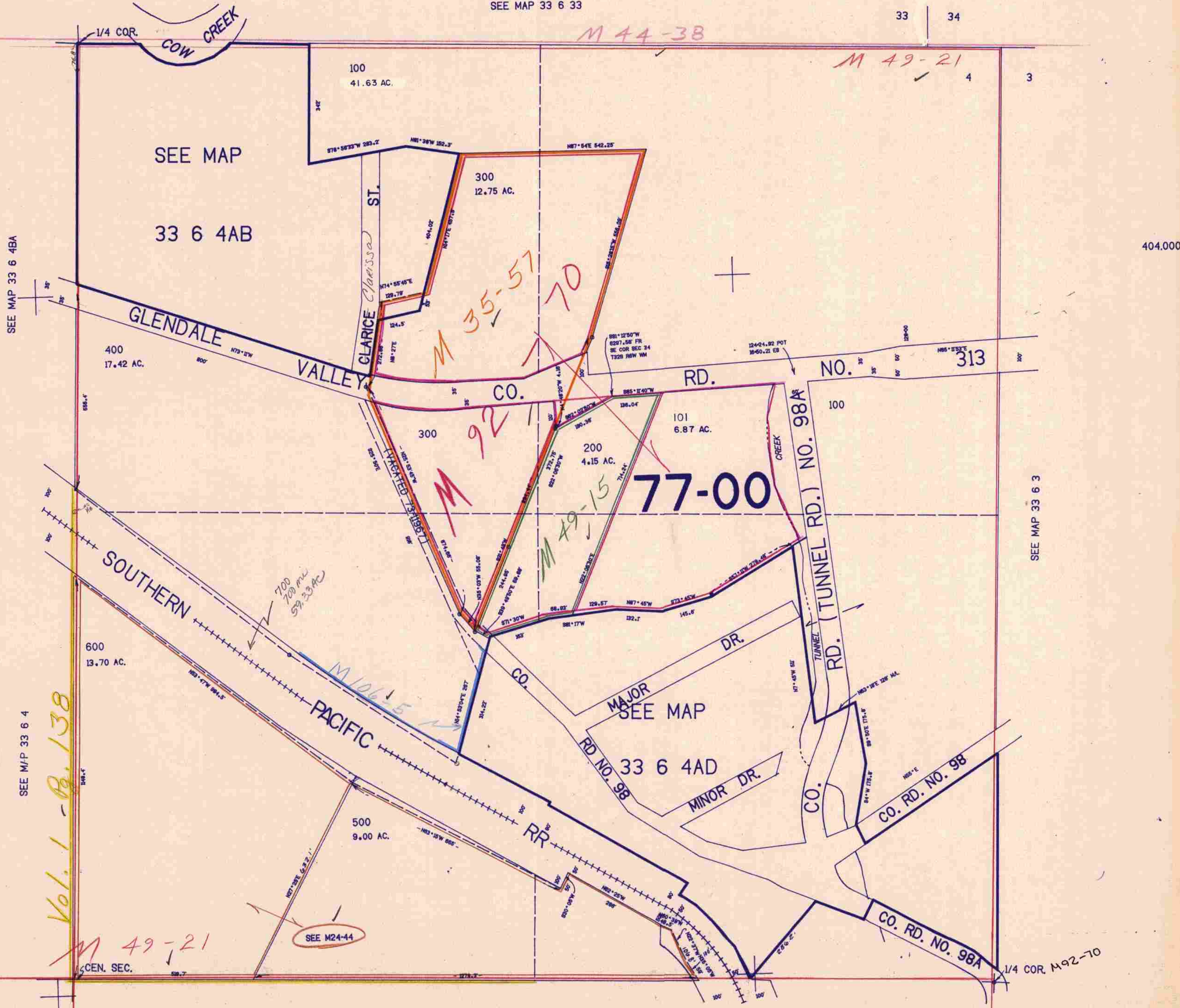
33 6 4A
& INDEX

THIS MAP WAS PREPARED FOR
ASSESSMENT PURPOSE ONLY.

1"=200'

SEE MAP 33 6 33

33 | 34



SEE MAP 33 6 4BA

SEE M/P 33 6 4

Vol. 1 - B. 138

M 49-21

SEE M24-44

SEE MAP 33 6 4D

SEE MAP 33 6 3

33 6 4A
& INDEX

11/83
BS

219,000